



MASTER LED tube EM/Mains T8 with Recycled Plastic



MAS LEDtube 600mm HO 7.6W865 T8

MASTER, LEDtube, T8, EM/Mains, 600 mm, 7.6 W, 18W TL-D, 6500 K, 1150 lm, CRI 80, 75000 h

Our new sustainability hero Philips MASTER LEDtube T8 EM/mains — a pioneering LED tube designed for performance, durability and environmental impact. As the first-ever LED tube to feature 40% post-consumer recycled plastic, it sets a new standard for sustainable lighting without compromising quality. With a long lifetime of 75,000 hours and high luminous efficacy up to 185 lm/W, the MASTER LEDtube T8 ensures outstanding energy efficiency. These T8 LED tubes are the right choice for absolute performance and are designed to stand up to everyday conditions. Unparalleled savings thanks to low-energy consumption and an exceptionally long lifetime ensure that this tube masters every demanding application.

Product data

General Information		Light Technical	
Cap base	G13 Rotatable end-cap	Colour Code	865 [CCT of 6500K]
Nominal lifetime	75,000 h	Beam angle (nom.)	160 degree(s)
Switching Cycle	200,000	Luminous Flux	1,150 lm
Lighting Technology	LEDtube	Colour designation	Cool Daylight
Flux measurement reference	Sphere	Correlated Colour Temperature (Nom)	6500 K
Warranty period	5 years	Luminous efficacy (rated) (nom.)	151 lm/W
		Colour consistency	<6
		Colour rendering index (CRI)	80

MASTER LED tube EM/Mains T8 with Recycled Plastic

LLMF at end of nominal lifetime (nom.)	70 %
Photobiological safety according to EN 62471	RG0

Operating and Electrical

Input frequency	50 to 60 Hz
Power Consumption	7.6 W
Lamp current (max.)	40 mA
Lamp current (min.)	30 mA
Starting time (nom.)	0.5 s
Warm-up time to 60% light	0.5 s
Power Factor (Fraction)	0.9
Voltage (nom.)	220-240 V
LED alternative to fluorescent lamp power	18W TL-D
Inrush current at mains	7
Max. lamp no. on MCB B type 10A — Mains	105
Max. lamp no. on MCB B type 10A – EM ballast without Compensation Capacitor.	125
Max. lamp no. on MCB B type 10A – EM ballast with Compensation Capacitor.	30
Max. lamp no. on MCB B type 16A — Mains	170
Max. lamp no. on MCB B type 16A – EM ballast without Compensation Capacitor.	290
Max. lamp no. on MCB B type 16A – EM ballast with Compensation Capacitor.	49
Ballast Compatibility	EM/Mains

Temperature

T-Case maximum (nom.)	50 °C
-----------------------	-------

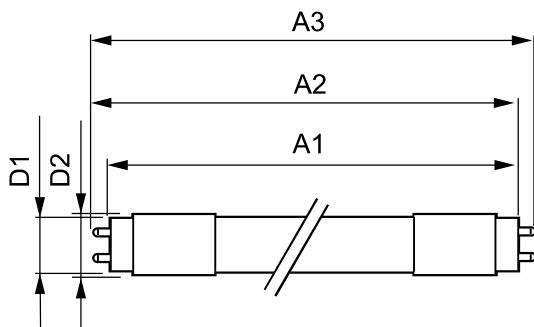
Controls and Dimming

Dimmable	No
----------	----

Mechanical and Housing

Lamp Finish	Frosted
Bulb material	Plastic
Product length	600 mm
Bulb shape	T8

Dimensional drawing



Net Weight (Piece)	0.095 kg
--------------------	----------

Approval and Application

Energy Efficiency Class	D
Energy-saving product	Yes
Approval marks	RoHS compliance CE marking KEMA Keur certificate ENEC certificate
Energy consumption kWh/1,000 hours	8 kWh
EPREL Registration Number	2571908
CE mark	Yes
EU RoHS compliant	Yes
Flickering value (PstLM)	0.1
Stroboscopic effect	0.1
Ambient temperature range	-20 to +45 °C
Post-consumer recycled plastic material ratio	40 %

Application Conditions

Can it be used in closed luminaires	Yes
Wireless Technology	Not applicable

Sustainability Data

Product non-virgin material ratio	40.9 %
-----------------------------------	--------

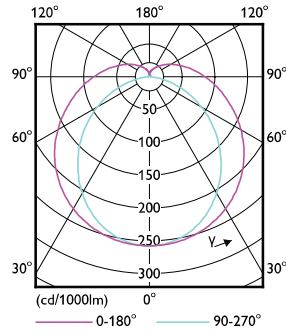
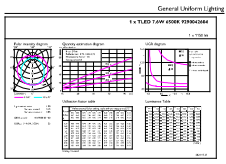
Product Data

Order product name	MAS LEDtube 600mm HO 7.6W865 T8
Full product name	MAS LEDtube 600mm HO 7.6W865 T8
Full EOC	872110304419800
Order code	929004260402
Material no. (12 NC)	929004260402
Numerator – quantity per pack	1
EAN/UPC – Product/Case	8721103044198
Numerator – packs per outer box	10
EAN/UPC – Case	8721103044204

Product	D1	D2	A1	A2	A3
MAS LEDtube 600mm HO 7.6W865 T8	25.8 mm	28 mm	588.5 mm	595.5 mm	602.5 mm

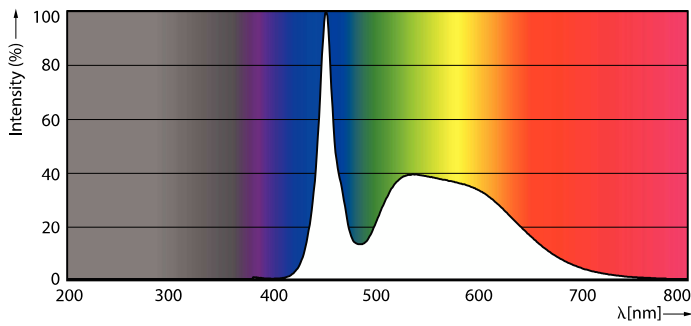
MASTER LED tube EM/Mains T8 with Recycled Plastic

Photometric data



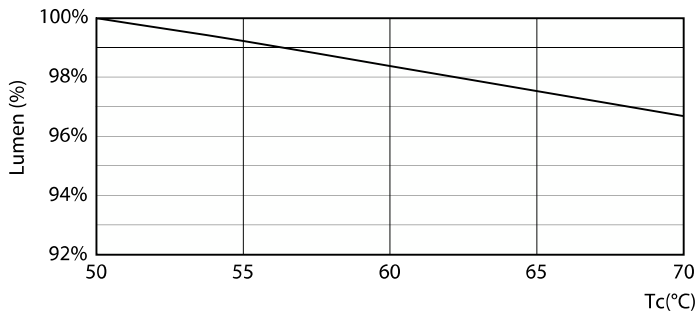
General uniform lighting - MAS LEDtube 600mm HO 7.6W865 T8

Light Distribution Diagram - MAS LEDtube 600mm HO 7.6W865 T8

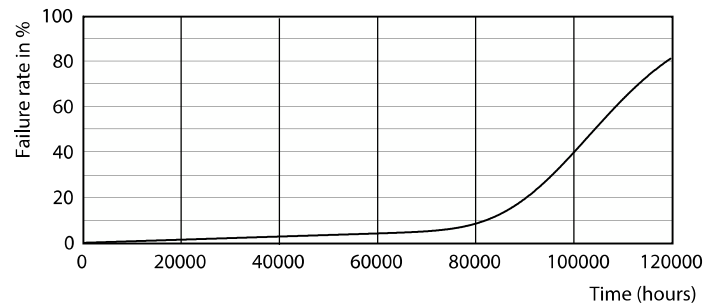


Spectral Power Distribution Colour - MAS LEDtube 600mm HO 7.6W865 T8

Lifetime



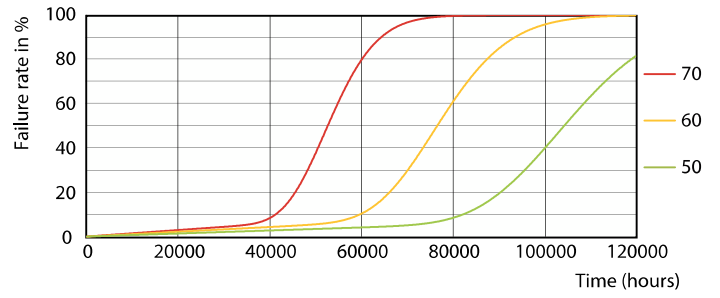
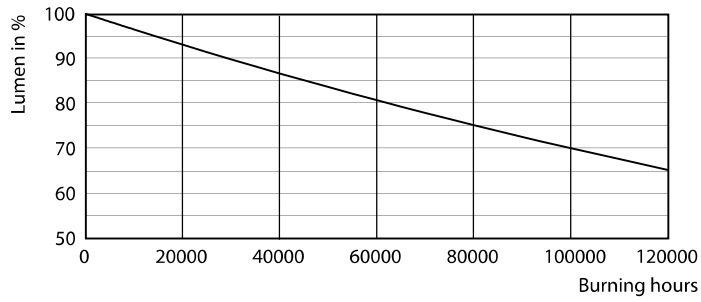
Lumen Maintenance Diagram - MAS LEDtube 600mm HO 7.6W865 T8



Life Expectancy Diagram

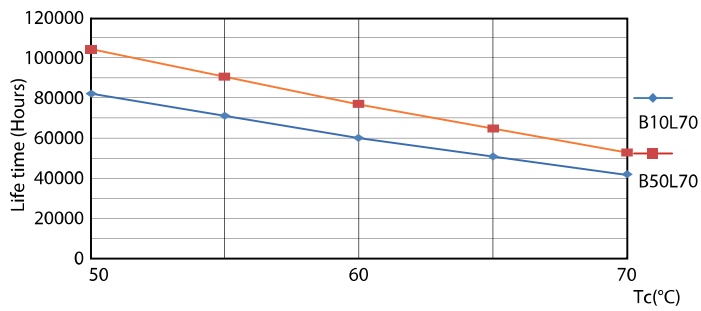
MASTER LED tube EM/Mains T8 with Recycled Plastic

Lifetime



Lumen Maintenance Diagram - MAS LEDtube 600mm HO 7.6W865 T8

Life Expectancy Diagram



Life Expectancy Diagram

