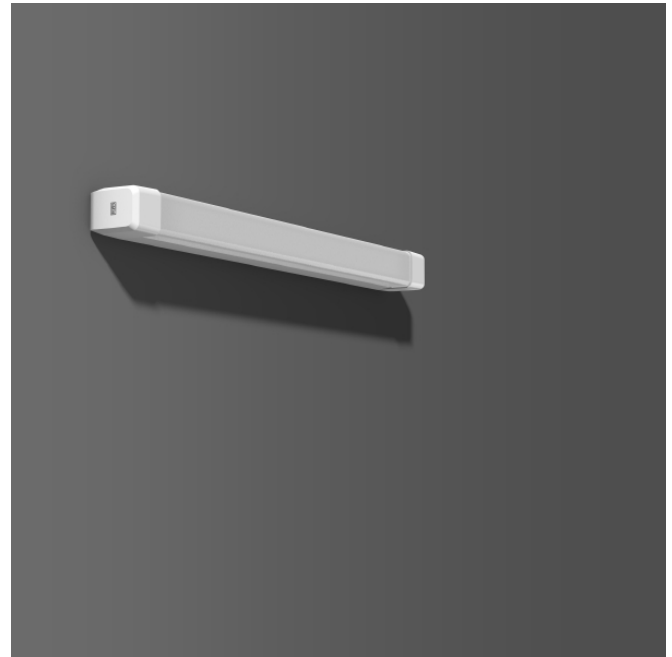
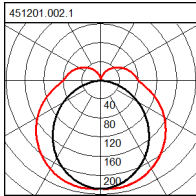


Baleva

451201.002.1 | Linear luminaires

Ceiling and wall luminaires
4051859180609
LED
L 600, B 46, H 60



Linear luminaire with timeless functional design. Ideal for sanitary areas, corridors, waiting areas, nursing homes, patient rooms. Body and end caps made of white plastic. Diffuser: plastic (polycarbonate), opal, shockproof. Homogeneous and smooth light distribution. Diffuser can be assembled without the use of tools. Quick and easy to install. Can be installed horizontally and vertically. 2 central cable inlets for looping the cable. Converter integrated and encapsulated.

Colour

Colour white

Dimensions

Length L 600 mm
Width B 46 mm
Height H 60 mm
Weight 475 g

Lamp

Lamp LED
Colour temperature 4000K
Colour rendering index (CRI) 80
Lifetime 50000 h (L80/B10)

Lighting technology

Beam Angle 149°/107°
Photobiological safety according to EN 62471 Risk group 0

Electrical

| | |
|--|--------------------------|
| Control gear | Converter |
| Voltage | 220 - 240 V / 50 - 60 Hz |
| Luminaires on B10A fuse | 15 |
| Luminaires on B16A fuse | 25 |
| Luminaires on C10A fuse | 31 |
| Luminaires on C16A fuse | 50 |
| Inrush current / inrush current duration | 3.2 A |
| Colour temperature 1 | 4.000 K |
| System power 1 | 10 W |
| Rated luminous flux 1 | 990 lm |
| Glare evaluation UGR (4H 8H) 1 | 23,8 |
| Luminaire efficacy 1 | 99 lm/W |

Approbations

| | |
|-------------------------------|---|
| Type of Protection | IP 40, IP 44 |
| Anmerkung Schutzart | IP 40 Ceiling mounting, IP 44 wall mounting |
| Protection Class | II |
| Glow Wire Test | 650°C - 30 seconds |
| Impact Protection | IK07 (2 Joule) |
| Other Marks | WEEE mark |
| Ambient temperature min. | -30 °C |
| Ambient temperature max. | 40 °C |
| ULOR | 18,3 % |
| CIE Flux Code / CEN Flux Code | 39 68 88 82 100 |
| Energy efficiency class LED | A+ |
| Energy class of included lamp | A+ |