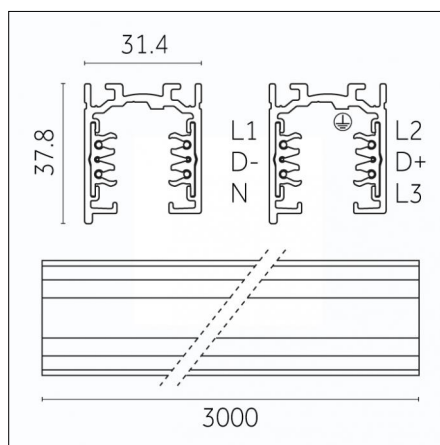
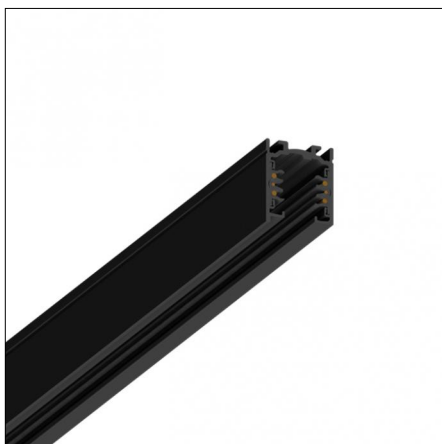


Tracks/channels



Code 0.02032.0010

Physical features

Finishing: White (Standard)

Length: 3000mm

Width: 31.4mm

Height: 37.8mm

Weight: 3Kg

Luminaire constructed in conformity with Directives 2014/35/EU (LV), 2014/30/EU (EMC), 2009/125/EC (Ecodesign) with Regulations (EC) No 245/2009, (EU) No 347/2010 and (EU) 2015/1428 (for luminaires with fluorescent and metal halide lamps only), 2009/125/EC (Ecodesign) with Regulations (EU) No 1194/2012 and 2015/1428 (for LED luminaires only), 2011/65/EU (RoHS 2) and 2012/19/EU (WEEE).

Reggiani SPA Illuminazione

Viale Monza, 16 20845 Sovico (MB) Italy
Tel. (+39) 039 2071.1 fax (+39) 039 2071 999

www.reggiani.net
contact@reggiani.net

Tracks/channels

Accessories



Code 0.02038.0010 - Left End-feed.

Finishing: White (Standard)

Description: Polarity-Left, Earth conductor - Right



Code 0.02038.0021 - Left End-feed.

Finishing: Black (Standard)

Description: Polarity-Left, Earth conductor - Right



Code 0.02038.0028 - Left End-feed.

Finishing: Metallised grey (Standard)

Description: Polarity-Left, Earth conductor - Right



Code 0.02039.0010 - Right End-feed.

Finishing: White (Standard)

Description: Polarity-Right, Earth conductor - Left



Code 0.02039.0021 - Right End-feed.

Finishing: Black (Standard)

Description: Polarity-Right, Earth conductor - Left



Code 0.02039.0028 - Right End-feed.

Finishing: Metallised grey (Standard)

Description: Polarity-Right, Earth conductor - Left

Luminaire constructed in conformity with Directives 2014/35/EU (LV), 2014/30/EU (EMC), 2009/125/EC (Ecodesign) with Regulations (EC) No 245/2009, (EU) No 347/2010 and (EU) 2015/1428 (for luminaires with fluorescent and metal halide lamps only), 2009/125/EC (Ecodesign) with Regulations (EU) No 1194/2012 and 2015/1428 (for LED luminaires only), 2011/65/EU (RoHS 2) and 2012/19/EU (WEEE).

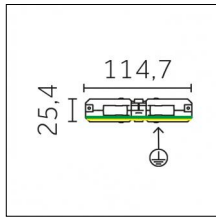
Reggiani SPA Illuminazione

Viale Monza, 16 20845 Sovico (MB) Italy
Tel. (+39) 039 2071.1 fax (+39) 039 2071 999

www.reggiani.net
contact@reggiani.net

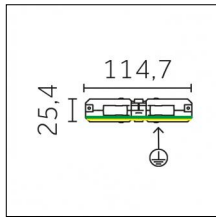
Tracks/channels

Accessories



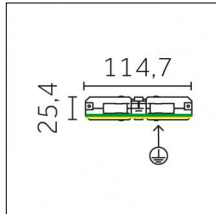
Code 0.02040.0010 - Straight connector

Finishing: White (Standard)



Code 0.02040.0021 - Straight connector

Finishing: Black (Standard)



Code 0.02040.0028 - Straight connector

Finishing: Metallised grey (Standard)



Code 0.02041.0010 - End cap (dead end) with locking screw

Finishing: White (Standard)



Code 0.02041.0021 - End cap (dead end) with locking screw

Finishing: Black (Standard)



Code 0.02041.0028 - End cap (dead end) with locking screw

Finishing: Metallised grey (Standard)

Luminaire constructed in conformity with Directives 2014/35/EU (LV), 2014/30/EU (EMC), 2009/125/EC (Ecodesign) with Regulations (EC) No 245/2009, (EU) No 347/2010 and (EU) 2015/1428 (for luminaires with fluorescent and metal halide lamps only), 2009/125/EC (Ecodesign) with Regulations (EU) No 1194/2012 and 2015/1428 (for LED luminaires only), 2011/65/EU (RoHS 2) and 2012/19/EU (WEEE).

Tracks/channels

Accessories



Code 0.02042.0010 - Middle linear feed

Type: Mounting
Finishing: White (Standard)



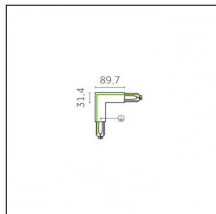
Code 0.02042.0021 - Middle linear feed

Type: Mounting
Finishing: Black (Standard)



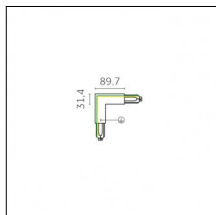
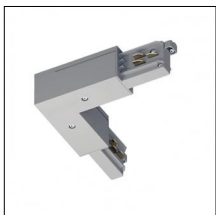
Code 0.02042.0028 - Middle linear feed

Type: Mounting
Finishing: Metallised grey (Standard)



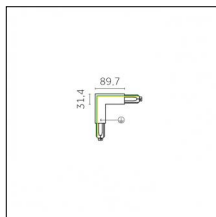
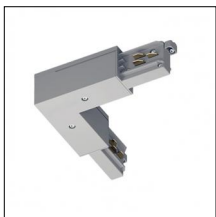
Code 0.02043.0010 - Middle L feed

Type: Mounting
Finishing: White (Standard)



Code 0.02043.0021 - Middle L feed

Type: Mounting
Finishing: Black (Standard)



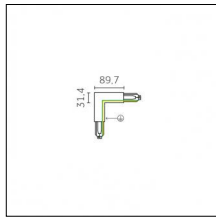
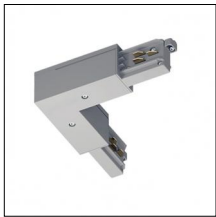
Code 0.02043.0028 - Middle L feed

Type: Mounting
Finishing: Metallised grey (Standard)

Luminaire constructed in conformity with Directives 2014/35/EU (LV), 2014/30/EU (EMC), 2009/125/EC (Ecodesign) with Regulations (EC) No 245/2009, (EU) No 347/2010 and (EU) 2015/1428 (for luminaires with fluorescent and metal halide lamps only), 2009/125/EC (Ecodesign) with Regulations (EU) No 1194/2012 and 2015/1428 (for LED luminaires only), 2011/65/EU (RoHS 2) and 2012/19/EU (WEEE).

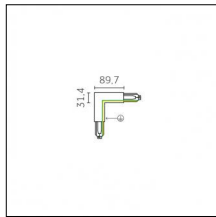
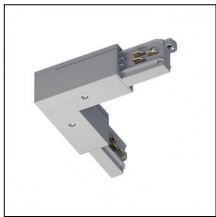
Tracks/channels

Accessories



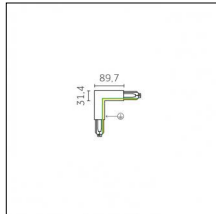
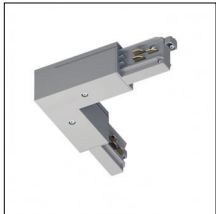
Code 0.02044.0010 - Middle L feed

Type: Mounting
Finishing: White (Standard)



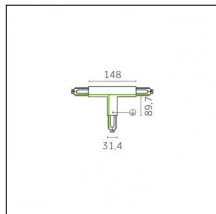
Code 0.02044.0021 - Middle L feed

Type: Mounting
Finishing: Black (Standard)



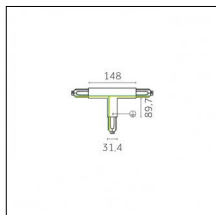
Code 0.02044.0028 - Middle L feed

Type: Mounting
Finishing: Metallised grey (Standard)



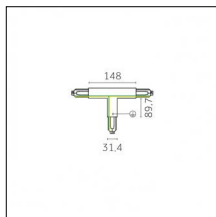
Code 0.02045.0010 - T-feed

Type: Mounting
Finishing: White (Standard)



Code 0.02045.0021 - T-feed

Type: Mounting
Finishing: Black (Standard)



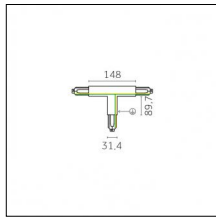
Code 0.02045.0028 - T-feed

Type: Mounting
Finishing: Metallised grey (Standard)

Luminaire constructed in conformity with Directives 2014/35/EU (LV), 2014/30/EU (EMC), 2009/125/EC (Ecodesign) with Regulations (EC) No 245/2009, (EU) No 347/2010 and (EU) 2015/1428 (for luminaires with fluorescent and metal halide lamps only), 2009/125/EC (Ecodesign) with Regulations (EU) No 1194/2012 and 2015/1428 (for LED luminaires only), 2011/65/EU (RoHS 2) and 2012/19/EU (WEEE).

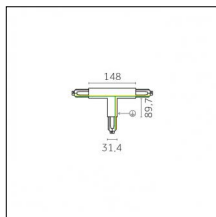
Tracks/channels

Accessories



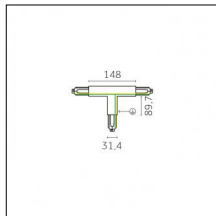
Code 0.02046.0010 - T-feed

Type: Mounting
Finishing: White (Standard)



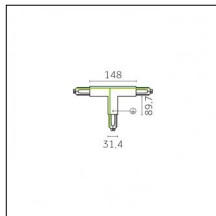
Code 0.02046.0021 - T-feed

Type: Mounting
Finishing: Black (Standard)



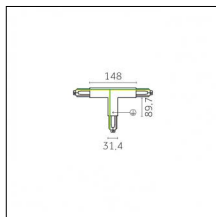
Code 0.02046.0028 - T-feed

Type: Mounting
Finishing: Metallised grey (Standard)



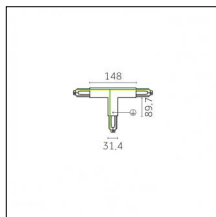
Code 0.02047.0010 - T-feed

Type: Mounting
Finishing: White (Standard)



Code 0.02047.0021 - T-feed

Type: Mounting
Finishing: Black (Standard)



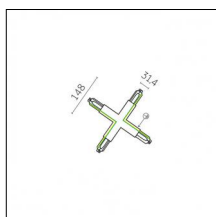
Code 0.02047.0028 - T-feed

Type: Mounting
Finishing: Metallised grey (Standard)

Luminaire constructed in conformity with Directives 2014/35/EU (LV), 2014/30/EU (EMC), 2009/125/EC (Ecodesign) with Regulations (EC) No 245/2009, (EU) No 347/2010 and (EU) 2015/1428 (for luminaires with fluorescent and metal halide lamps only), 2009/125/EC (Ecodesign) with Regulations (EU) No 1194/2012 and 2015/1428 (for LED luminaires only), 2011/65/EU (RoHS 2) and 2012/19/EU (WEEE).

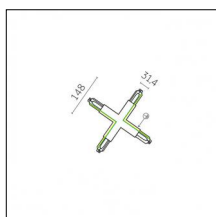
Tracks/channels

Accessories



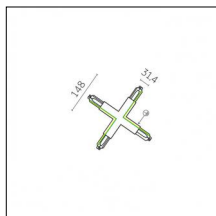
Code 0.02048.0010 - T-feed

Type: Mounting
Finishing: White (Standard)



Code 0.02048.0021 - T-feed

Type: Mounting
Finishing: Black (Standard)



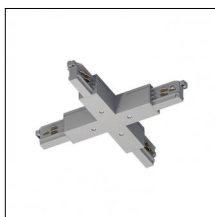
Code 0.02048.0028 - T-feed

Type: Mounting
Finishing: Metallised grey (Standard)



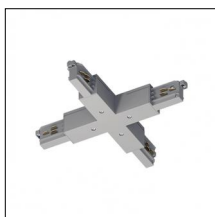
Code 0.02049.0010 - X-feed

Type: Mounting
Finishing: White (Standard)



Code 0.02049.0021 - X-feed

Type: Mounting
Finishing: Black (Standard)



Code 0.02049.0028 - X-feed

Type: Mounting
Finishing: Metallised grey (Standard)

Luminaire constructed in conformity with Directives 2014/35/EU (LV), 2014/30/EU (EMC), 2009/125/EC (Ecodesign) with Regulations (EC) No 245/2009, (EU) No 347/2010 and (EU) 2015/1428 (for luminaires with fluorescent and metal halide lamps only), 2009/125/EC (Ecodesign) with Regulations (EU) No 1194/2012 and 2015/1428 (for LED luminaires only), 2011/65/EU (RoHS 2) and 2012/19/EU (WEEE).

Tracks/channels

Accessories



Code 0.02050.0010 - Adjustable corner

Type: Mounting
Finishing: White (Standard)



Code 0.02050.0021 - Adjustable corner

Type: Mounting
Finishing: Black (Standard)



Code 0.02050.0028 - Adjustable corner

Type: Mounting
Finishing: Metallised grey (Standard)



Code 0.02051.0010 - Short bracket M6 for track

Type: Mounting
Finishing: White (Standard)
Description: Composed of: - point clamp suspension M6 - plastic cover



Code 0.02051.0021 - Short bracket M6 for track

Type: Mounting
Finishing: Black (Standard)
Description: Composed of: - point clamp suspension M6 - plastic cover



Code 0.02051.0028 - Short bracket M6 for track

Type: Mounting
Finishing: Metallised grey (Standard)
Description: Composed of: - point clamp suspension M6 - plastic cover

Luminaire constructed in conformity with Directives 2014/35/EU (LV), 2014/30/EU (EMC), 2009/125/EC (Ecodesign) with Regulations (EC) No 245/2009, (EU) No 347/2010 and (EU) 2015/1428 (for luminaires with fluorescent and metal halide lamps only), 2009/125/EC (Ecodesign) with Regulations (EU) No 1194/2012 and 2015/1428 (for LED luminaires only), 2011/65/EU (RoHS 2) and 2012/19/EU (WEEE).

Tracks/channels

Accessories



Code 0.02052.0010 - Suspension set, 1500m

Type: Mounting

Finishing: White (Standard)

Description: Suspension set composed of: ceiling bracket - wire clamp - plastic ceiling rose (Ø32 mm) - steel wire (Ø1,5mm; L=1,5m) with M6 terminal.



Code 0.02052.0021 - Suspension set, 1500m

Type: Mounting

Finishing: Black (Standard)

Description: Suspension set composed of: ceiling bracket - wire clamp - plastic ceiling rose (Ø32 mm) - steel wire (Ø1,5mm; L=1,5m) with M6 terminal.



Code 0.02052.0028 - Suspension set, 1500m

Type: Mounting

Finishing: Metallised grey (Standard)

Description: Suspension set composed of: ceiling bracket - wire clamp - plastic ceiling rose (Ø32 mm) - steel wire (Ø1,5mm; L=1,5m) with M6 terminal.



Code 0.02053.0010 - Suspension set, 5000m

Type: Mounting

Finishing: White (Standard)

Description: Suspension set composed of: ceiling bracket - wire clamp - plastic ceiling rose (Ø32 mm) - steel wire (Ø1,5mm; L=5m) with M6 terminal.



Code 0.02053.0021 - Suspension set, 5000m

Type: Mounting

Finishing: Black (Standard)

Description: Suspension set composed of: ceiling bracket - wire clamp - plastic ceiling rose (Ø32 mm) - steel wire (Ø1,5mm; L=5m) with M6 terminal.



Code 0.02053.0028 - Suspension set, 5000m

Type: Mounting

Finishing: Metallised grey (Standard)

Description: Suspension set composed of: ceiling bracket - wire clamp - plastic ceiling rose (Ø32 mm) - steel wire (Ø1,5mm; L=5m) with M6 terminal.

Luminaire constructed in conformity with Directives 2014/35/EU (LV), 2014/30/EU (EMC), 2009/125/EC (Ecodesign) with Regulations (EC) No 245/2009, (EU) No 347/2010 and (EU) 2015/1428 (for luminaires with fluorescent and metal halide lamps only), 2009/125/EC (Ecodesign) with Regulations (EU) No 1194/2012 and 2015/1428 (for LED luminaires only), 2011/65/EU (RoHS 2) and 2012/19/EU (WEEE).

Reggiani SPA Illuminazione

Viale Monza, 16 20845 Sovico (MB) Italy
Tel. (+39) 039 2071.1 fax (+39) 039 2071 999

www.reggiani.net
contact@reggiani.net

Tracks/channels

Accessories



Code 0.02054.0010 - Accessory for ceiling mounting

Type: Mounting
Finishing: White (Standard)



Code 0.02054.0021 - Accessory for ceiling mounting

Type: Mounting
Finishing: Black (Standard)



Code 0.02054.0028 - Accessory for ceiling mounting

Type: Mounting
Finishing: Metallised grey (Standard)



Code 0.02055.0010 - Accessory for suspended mounting

Type: Mounting
Finishing: White (Standard)



Code 0.02055.0021 - Accessory for suspended mounting

Type: Mounting
Finishing: Black (Standard)



Code 0.02055.0028 - Accessory for suspended mounting

Type: Mounting
Finishing: Metallised grey (Standard)

Luminaire constructed in conformity with Directives 2014/35/EU (LV), 2014/30/EU (EMC), 2009/125/EC (Ecodesign) with Regulations (EC) No 245/2009, (EU) No 347/2010 and (EU) 2015/1428 (for luminaires with fluorescent and metal halide lamps only), 2009/125/EC (Ecodesign) with Regulations (EU) No 1194/2012 and 2015/1428 (for LED luminaires only), 2011/65/EU (RoHS 2) and 2012/19/EU (WEEE).

Tracks/channels

Accessories



Code 0.02061.0010 - Clips with tensioner for quick attachment of the track

Type: Mounting
Finishing: White (Standard)



Code 0.02061.0021 - Clips with tensioner for quick attachment of the track

Type: Mounting
Finishing: Black (Standard)



Code 0.02061.0028 - Clips with tensioner for quick attachment of the track

Type: Mounting
Finishing: Metallised grey (Standard)



Code 0.02062.0010 - DALI header for adapter ceiling fixing (without using track)

Type: Mounting
Finishing: White (Standard)



Code 0.02062.0021 - DALI header for adapter ceiling fixing (without using track)

Type: Mounting
Finishing: Black (Standard)



Code 0.02062.0028 - DALI header for adapter ceiling fixing (without using track)

Type: Mounting
Finishing: Metallised grey (Standard)

Luminaire constructed in conformity with Directives 2014/35/EU (LV), 2014/30/EU (EMC), 2009/125/EC (Ecodesign) with Regulations (EC) No 245/2009, (EU) No 347/2010 and (EU) 2015/1428 (for luminaires with fluorescent and metal halide lamps only), 2009/125/EC (Ecodesign) with Regulations (EU) No 1194/2012 and 2015/1428 (for LED luminaires only), 2011/65/EU (RoHS 2) and 2012/19/EU (WEEE).

Tracks/channels

Accessories



Code 0.02063.0010 - Header for adapter ceiling fixing (without using track)

Type: Mounting
Finishing: White (Standard)



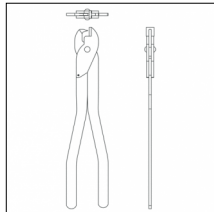
Code 0.02063.0021 - Header for adapter ceiling fixing (without using track)

Type: Mounting
Finishing: Black (Standard)



Code 0.02063.0028 - Header for adapter ceiling fixing (without using track)

Type: Mounting
Finishing: Metallised grey (Standard)



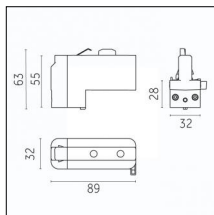
Code 0.02064.0000 - Cutting tool for track conductors

Type: Mounting
Finishing: Without finish / Stainles Steel / Natural aluminium (Standard)



Code 0.02065.0000 - Clip per fissaggio a soffitto

Type: Mounting
Finishing: Without finish / Stainles Steel / Natural aluminium (Standard)

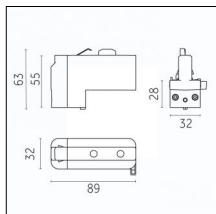


Code 0.02066.0010 - 6-conductor asymmetric adapter

Type: Mounting
Finishing: White (Standard)
Description: (3 circuits+N+control system) with circuit selector

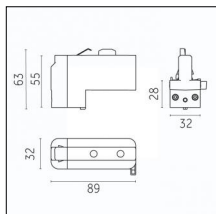
Luminaire constructed in conformity with Directives 2014/35/EU (LV), 2014/30/EU (EMC), 2009/125/EC (Ecodesign) with Regulations (EC) No 245/2009, (EU) No 347/2010 and (EU) 2015/1428 (for luminaires with fluorescent and metal halide lamps only), 2009/125/EC (Ecodesign) with Regulations (EU) No 1194/2012 and 2015/1428 (for LED luminaires only), 2011/65/EU (RoHS 2) and 2012/19/EU (WEEE).

Accessories



Code 0.02066.0021 - 6-conductor asymmetric adapter

Type: Mounting
Finishing: Black (Standard)
Description: (3 circuits+N+control system) with circuit selector



Code 0.02066.0028 - 6-conductor asymmetric adapter

Type: Mounting
Finishing: Metallised grey (Standard)
Description: (3 circuits+N+control system) with circuit selector



Code 0.02068.0010 - X-connector

Type: Mounting
Finishing: White (Standard)
Description: Earth inside / outside



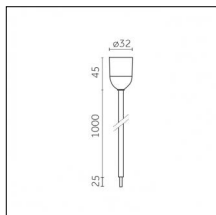
Code 0.02068.0021 - X-connector

Type: Mounting
Finishing: Black (Standard)
Description: Earth inside / outside



Code 0.02068.0028 - X-connector

Type: Mounting
Finishing: Metallised grey (Standard)
Description: Earth inside / outside

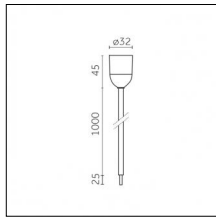
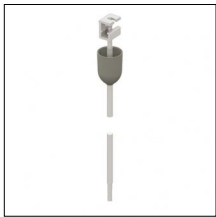


Code 0.02070.0010 - Suspension kit with 1m tige.

Finishing: White (Standard)
Description: Ceiling bracket, plastic ceiling rose, threaded M6 rod

Tracks/channels

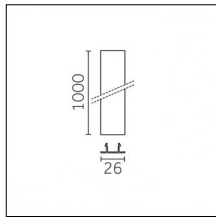
Accessories



Code 0.02070.0021 - Suspension kit with 1m tige.

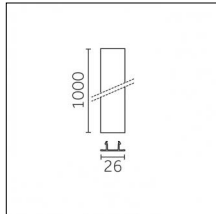
Finishing: Black (Standard)

Description: Ceiling bracket, plastic ceiling rose, threaded M6 rod



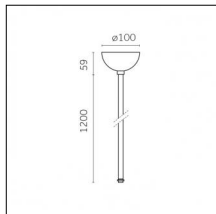
Code 0.02071.0010 - Track cover - 1000mm

Finishing: White (Standard)



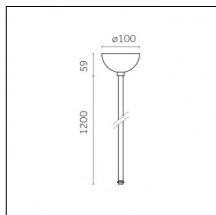
Code 0.02071.0021 - Track cover - 1000mm

Finishing: Black (Standard)



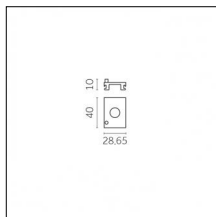
Code 0.02528.0010 - Suspension set with tige M13 1,2m

Finishing: White (Standard)



Code 0.02528.0021 - Suspension set with tige M13 1,2m

Finishing: Black (Standard)

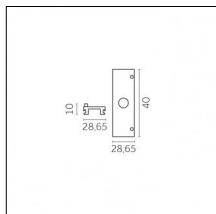


Code 0.02529.0000 - Long bracket M13 for h track

Finishing: Without finish / Stainles Steel / Natural aluminium (Standard)

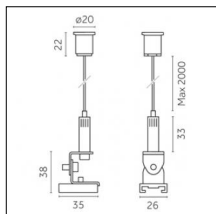
Luminaire constructed in conformity with Directives 2014/35/EU (LV), 2014/30/EU (EMC), 2009/125/EC (Ecodesign) with Regulations (EC) No 245/2009, (EU) No 347/2010 and (EU) 2015/1428 (for luminaires with fluorescent and metal halide lamps only), 2009/125/EC (Ecodesign) with Regulations (EU) No 1194/2012 and 2015/1428 (for LED luminaires only), 2011/65/EU (RoHS 2) and 2012/19/EU (WEEE).

Accessories



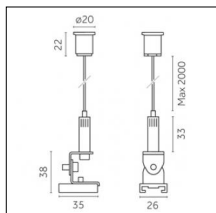
Code 0.02530.0000 - Short bracket M13 for H track

Finishing: Without finish / Stainless Steel / Natural aluminium (Standard)



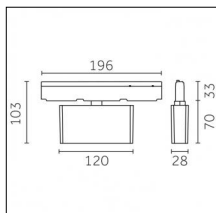
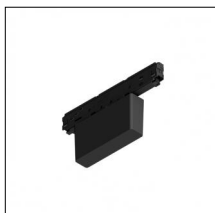
Code 0.25864.0010 - Suspension kit with 2-m long wire and counter-balance system

Finishing: White (Standard)



Code 0.25864.0021 - Suspension kit with 2-m long wire and counter-balance system

Finishing: Black (Standard)

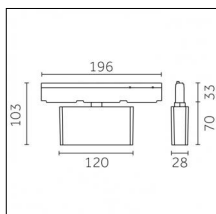
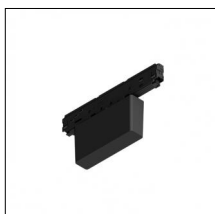


Code 0.26102.0010 - Wireless control device for 220V track

Type: Electrical

Finishing: White (Standard)

Description: Casambi - controls up to 64 drivers divided in 4 groups

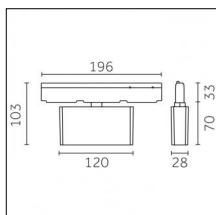


Code 0.26102.0021 - Wireless control device for 220V track

Type: Electrical

Finishing: Black (Standard)

Description: Casambi - controls up to 64 drivers divided in 4 groups



Code 0.26103.0010 - Wireless control device for 220V track

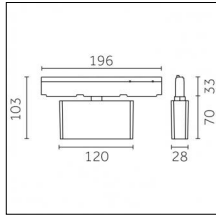
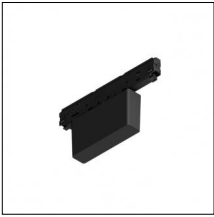
Type: Electrical

Finishing: White (Standard)

Description: Controls up to 64 drivers individually - available from March 2019

Tracks/channels

Accessories



Code 0.26103.0021 - Wireless control device for 220V track

Type: Electrical

Finishing: Black (Standard)

Description: Controls up to 64 drivers individually - available from March 2019

Luminaire constructed in conformity with Directives 2014/35/EU (LV), 2014/30/EU (EMC), 2009/125/EC (Ecodesign) with Regulations (EC) No 245/2009, (EU) No 347/2010 and (EU) 2015/1428 (for luminaires with fluorescent and metal halide lamps only), 2009/125/EC (Ecodesign) with Regulations (EU) No 1194/2012 and 2015/1428 (for LED luminaires only), 2011/65/EU (RoHS 2) and 2012/19/EU (WEEE).