



# MHN-TD

MHN-TD 70W/842 RX7s 1CT

Double-ended quartz Metal-halide lamp

## Product data

### • General Characteristics

|                      |  |
|----------------------|--|
| Cap-Base             | RX7s                                     |
| Cap-Base Information | na [-]                                   |
| Bulb                 | TD                                       |
| Bulb Finish          | Clear                                    |
| Operating Position   | p45 [Parallel +/-45D or Horizontal(HOR)] |
| Life to 5% failures  | 5000 hr                                  |
| Life to 20% failures | 8000 hr                                  |
| Life to 50% failures | 10500 hr                                 |

### • Light Technical Characteristics

|                           |                         |
|---------------------------|-------------------------|
| Color Code                | 842 [CCT of 4200K]      |
| Color Rendering Index     | 80 Ra8                  |
| Color Designation (text)  | Cool White              |
| Color Temperature         | 4200 K                  |
| Luminous Flux Lamp EM     | 5700 Lm                 |
| Luminous Efficacy Lamp EM | 76 Lm/W                 |
| Lumen Maintenance 2000h   | 85 %                    |
| Lumen Maintenance 5000h   | 80 %                    |
| Lumen Maintenance 10000h  | 75 %                    |
| Luminance Average EM      | 1500 cd/cm <sup>2</sup> |
| Chromaticity Coordinate X | 370 -                   |
| Chromaticity Coordinate Y | 370 -                   |

### • Electrical Characteristics

|                       |              |
|-----------------------|--------------|
| Lamp Wattage          | 70 W         |
| Lamp Wattage EM       | 75 W         |
| Lamp Voltage          | 90 V         |
| Lamp Current EM       | 1.0 A        |
| Ignition Peak Voltage | 1800 (min) V |
| Dimmable              | No           |

### • Environmental Characteristics

|                      |       |
|----------------------|-------|
| Mercury (Hg) Content | 11 mg |
|----------------------|-------|

### • Luminaire Design Requirements

|                   |             |
|-------------------|-------------|
| Pinch Temperature | 280 (max) C |
| Bulb Temperature  | 500 (max) C |

### • Product Dimensions

|                              |                |
|------------------------------|----------------|
| Insertion Length B           | 114.2 (max) mm |
| Overall Length C             | 117.6 (max) mm |
| Diameter D                   | 19.5 (max) mm  |
| Light Center Length L        | 57.0 mm        |
| Arc Length O                 | 7.7 mm         |
| Light Center Length L [inch] | 2.24 in        |
| Overall Length C [inch]      | 4.63 (max) in  |
| Diameter D [inch]            | 0.75 in        |

### • Footnotes

|               |  |
|---------------|--|
| Footnotes HID | 372 [Color characteristics may vary somewhat from one lamp type to another. Time should be allowed for |
|---------------|--|

**PHILIPS**

the lamp to stabilize in color when it is turned on for the first time or if for any reason its operating position is changed. This may require several hours' operation, with more than one start. Lamp color and output may change temporarily if the lamp is subjected to excess vibration or shock. Lamp color characteristics may change after long accumulate operating time.]

Footnotes HID

392 [Supply volts must be +/- 5% of rated ballast line volts for reactor type and +/- 10% for CWA or electronic ballasts.]

• Product Data

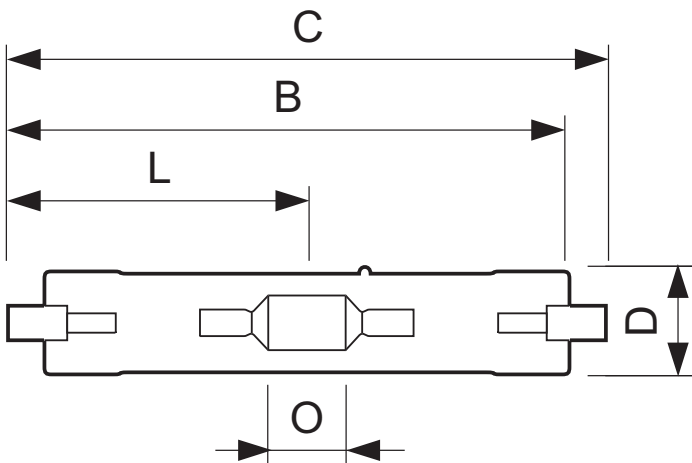
|                             |                            |
|-----------------------------|----------------------------|
| Order code                  | 928070205190               |
| Full product code           | 928070205190               |
| Full product name           | MHN-TD 70W/842 RX7s 1CT    |
| Order product name          | MHN-TD 70W/842 RX7s 1CT/12 |
| Pieces per pack             | 1                          |
| Packing configuration       | 12                         |
| Packs per outerbox          | 12                         |
| Bar code on pack - EAN1     | 8718291215325              |
| Bar code on outerbox - EAN3 | 8718291215332              |
| Logistic code(s) - 12NC     | 928070205190               |
| ILCOS code                  | MD-70/42/1B-H-Rx7s-/H      |
| Net weight per piece        | 0.028 kg                   |

Warnings and Safety

- Use only in totally enclosed luminaire, even during testing (IEC61167, IEC 62035, IEC60598)

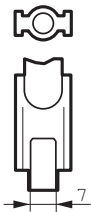
- The luminaire must be able to contain hot lamp parts if the lamp ruptures
- Control gear must include end-of-life protection (IEC61167, IEC 62035)

Dimensional drawing



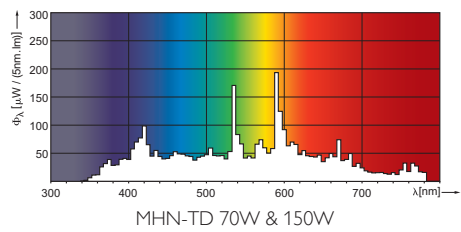
MHN-TD 70W/842 RX7s 1CT

| Product             | C (Max) | D (Max) | O (Norm) |
|---------------------|---------|---------|----------|
| MHN-TD 70W/842 RX7s | 117.6   | 19.5    | 7.7      |



RX7s

Photometric data



© 2013 Koninklijke Philips N.V. (Royal Philips)  
All rights reserved.

Specifications are subject to change without notice. Trademarks are the property of Koninklijke Philips N.V. (Royal Philips) or their respective owners.

[www.philips.com/lighting](http://www.philips.com/lighting)

2013, June 25  
data subject to change