

HID-HeavyDuty BHL for HPL/HPI

HID-HeavyDuty BHL 250 L40 230V 50Hz HD2-126

Encapsulated electromagnetic copper/iron ballasts for HPL, HPI (Plus) and SON-H lamps

Product data

• General Characteristics

Application code	L40
Design	HD2-126
Rated Lamptype	HPL/HPI
Rated Number of Lamps	1 piece
Rated Ballast-Lamp Power	250
Line Voltage	230 V
Line Frequency	50 Hz

• Operating Characteristics

Mains voltage safety (AC)	-10%/+10%
Mains voltage performance (AC)	-8%/+6%
Input current with PF-correct.	1.35 A
Input current w/o PF-correct.	2.13 A
Power losses gear	19.5 W
PowerFactor 100% output power	0.87 -
PowerFactor w/o PF compens.	0.55 -

• Wiring Characteristics

Connector type	Screw
Striplength	7.0 mm
Wcs Ballast contacts	0.70-6.00 mm ²

• System Chars on driver level

Recommended Ignitor	no ignitor for HPL-N for HPI-T ignitor SI51 (913619519966)
---------------------	--

Capacitor	18µF/250V
-----------	-----------

• Temperature Characteristics

T-storage	-30 (min), 130 (max) C
T-winding maximum (tw)	130 (max) C
Delta-T normal conditions	85 C

• Product Dimensions

Length A1	126.0 mm
Fixing Hole Distance	107.5 mm
Length A2	
Width B1	81.0 mm
Height C1	66.0 mm
Fixing Hole Diameter D1	6.2 mm

• Approval & Application Chars

CE marking	Yes
ENEC certificate	Yes

• Product Data

Order code	913603920426
Full product code	913603920426
Full product name	BHL 250 L40 230V 50Hz HD2-126
Order product name	BHL 250 L40 230V 50Hz HD2-126
Pieces per pack	1
Packing configuration	6
Packs per outerbox	6
Bar code on pack - EAN1	8711500919502

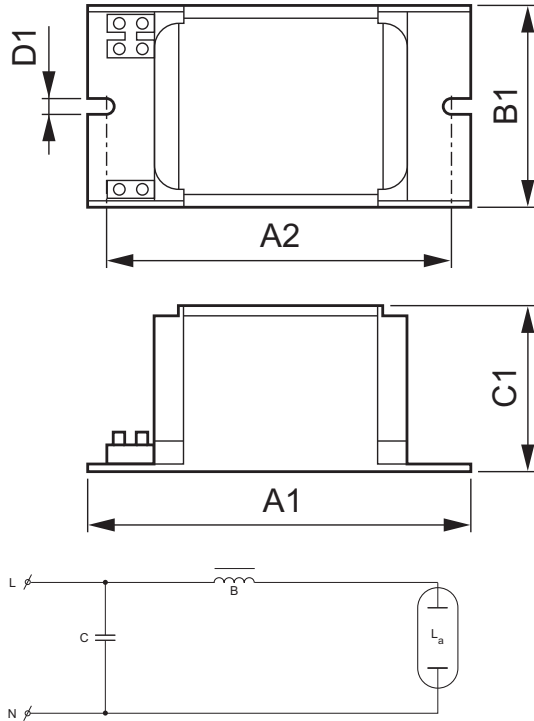
PHILIPS

HID-HeavyDuty BHL for HPL/HPI

Bar code on
outerbox - EAN3 8711500934604
Logistic code(s) -
12NC 913603920426

Net weight per piece 1.840 kg

Dimensional drawing



HID-HeavyDuty BHL 250 L40 230V 50Hz HD2-126

Product	A1 (Norm)	A2 (Norm)	B1 (Norm)	C1 (Norm)	D1 (Norm)
BHL 250 L40 230V 50Hz HD2-126	126.0	107.5	81.0	66.0	6.2



© 2015 Koninklijke Philips N.V. (Royal Philips)
All rights reserved.

Specifications are subject to change without notice. Trademarks are the property of Koninklijke Philips N.V. (Royal Philips) or their respective owners.

www.philips.com/lighting

2015, August 29
data subject to change