

# HID-HeavyDuty BSN semi-parallel for SON/CDO/MH/HPI

BSN 250 L33-TS 230V 50Hz HD2-151

Encapsulated electromagnetic copper/iron ballasts for use with an external semi-parallel ignitor for CDM, CDO, MH, HPI (Plus) and SON lamps

**PHILIPS**

# HID-HeavyDuty BSN semi-parallel for SON/CDO/MH/HPI

## Product data

### • General Information

Application Code	L33-TS
Design	HD2-151
Lamp Type	SON/HPI/CDM
Number Of Lamps	1 piece/unit

Rated Ballast-Lamp Power	250 W
Recommended Ignitor	for SON/CDO lamps ignitor SN 58 (913619579966) OR SND 58 (913700185166)

### • Operating and Electrical

Input Voltage	230 V
Input Frequency	50 Hz
Power Factor 100% Load (Nom)	0.87
Mains Voltage	-8%~+6%
Performance (AC)	
Mains Voltage Safety (AC)	-10%~+10%
Input Current With PF Correction	1.40 A
Input Current Without PF Correction	3.00 A
Power Factor Without PF Compensation (Nom)	0.40
Power Losses (Nom)	29.0 W

### • Temperature

T-Storage (Max)	130 °C
T-Storage (Min)	-30 °C
T-Winding (Max)	130 °C
Delta-T Normal Conditions	80 °C

### • Approval and Application

Active Temperature Protection	Yes
-------------------------------	-----

### • Product Data

Full product code	871150005964230
Order product name	BSN 250 L33-TS 230V 50Hz HD2-151
EAN/UPC - Product Order code	8711500059642 913700226326
Numerator - Quantity Per Pack	1
Numerator - Packs per outer box	6
Material Nr. (12NC)	913700226326
Net Weight (Piece)	2.700 kg

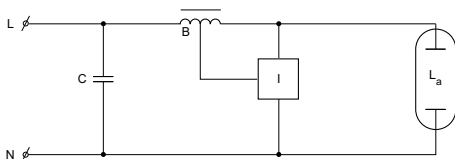
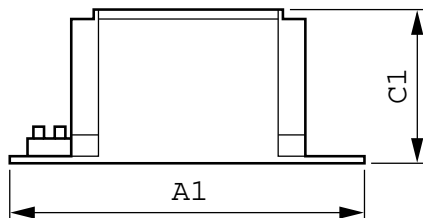
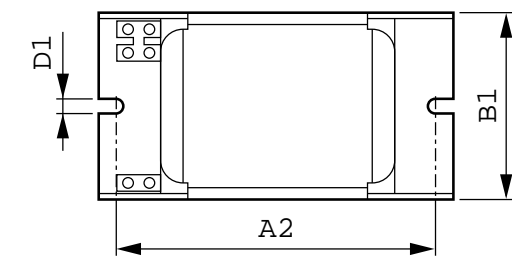
### • Wiring

Wire Striplength	7.0 mm
Ballast Contact Wire Cross Section	0.70-6.00 mm <sup>2</sup>
Connector Type	Screw

### • System characteristics

Capacitor	32µF/250V
-----------	-----------

## Dimensional drawing



### BSN 250 L33-TS 230V 50Hz HD2-151

Product	D1	C1	A1	A2	B1
BSN 250 L33-TS 230V 50Hz HD2-151	6.2 mm	66.0 mm	151.0 mm	132.5 mm	81.0 mm



© 2015 Philips Lighting Holding B.V.  
All rights reserved.

Specifications are subject to change without notice. Trademarks are the property of Koninklijke Philips N.V. (Royal Philips) or their respective owners.

[www.philips.com/lighting](http://www.philips.com/lighting)

2015, December 24  
data subject to change