

# HID ignitors for series systems

SI 51 220-240V 50/60Hz

HID ignitors for series systems

## Product data

### • General Information

|                  |              |
|------------------|--------------|
| Application Code | 51           |
| Lamp Type        | HPI          |
| Number Of Lamps  | 1 piece/unit |

### • Operating and Electrical

|                           |              |
|---------------------------|--------------|
| Input Voltage             | 220 to 240 V |
| Input Frequency           | 50-60_1 Hz   |
| Igniton Type              | Parallel     |
| Number Of Ignition Pulses | 1            |
| Ignition Voltage (Max)    | 0.75 kV      |
| Response Voltage          | 190 V        |
| Mains Voltage             | -8%+6%       |
| Performance (AC)          |              |
| Mains Voltage Safety (AC) | -10%+10%     |
| Power Losses (Nom)        | 1.0 W        |

### • Wiring

|                                    |                           |
|------------------------------------|---------------------------|
| Cable Capacity                     | 150 nF                    |
| Wires Device To Lamp (Nom)         |                           |
| Wire Striplength                   | 6.0 mm                    |
| Ballast Contact Wire Cross Section | 0.70-2.50 mm <sup>2</sup> |
| Connector Type                     | Screw                     |

### • System characteristics

|                          |           |
|--------------------------|-----------|
| Rated Ballast-Lamp Power | 250/400 W |
|--------------------------|-----------|

### • Temperature

|                      |        |
|----------------------|--------|
| T-Ambient (Max)      | 75 °C  |
| T-Ambient (Min)      | -20 °C |
| T-Storage (Max)      | 80 °C  |
| T-Storage (Min)      | -25 °C |
| T-Case Maximum (Max) | 80 °C  |

### • Mechanical and Housing

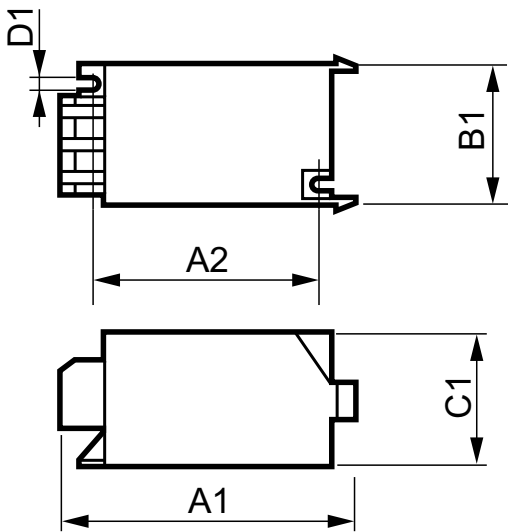
|         |        |
|---------|--------|
| Housing | SNI-85 |
|---------|--------|

### • Product Data

|                                 |                        |
|---------------------------------|------------------------|
| Full product code               | 871150091553530        |
| Order product name              | SI 51 220-240V 50/60Hz |
| EAN/UPC - Product               | 8711500915535          |
| Order code                      | 913619519966           |
| Numerator - Quantity Per Pack   | 1                      |
| Numerator - Packs per outer box | 48                     |
| Material Nr. (12NC)             | 913619519966           |
| Net Weight (Piece)              | 0.047 kg               |

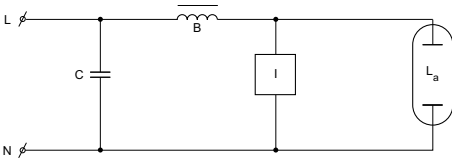
**PHILIPS**

## Dimensional drawing



SI 51 220-240V 50/60Hz

| Product                | D1     | C1      | A1      | A2      | B1      |
|------------------------|--------|---------|---------|---------|---------|
| SI 51 220-240V 50/60Hz | 4.3 mm | 38.0 mm | 84.5 mm | 65.0 mm | 41.0 mm |



© 2015 Philips Lighting Holding B.V.  
All rights reserved.

Specifications are subject to change without notice. Trademarks are the property of Koninklijke Philips N.V. (Royal Philips) or their respective owners.

[www.philips.com/lighting](http://www.philips.com/lighting)

2015, December 24  
data subject to change