



# HID ignitors for series systems

SN D 58 220-240V 50/60Hz

HID ignitors for series systems

## Product data

### • General Information

Application Code	58
Lamp Type	SON/CDM/MH/HPI/HPA
Number Of Lamps	1 piece/unit

### • Operating and Electrical

Input Voltage	220 to 240 V
Input Frequency	50-60 1 Hz
Igniton Type	Semi-Parallel
Ignition Attempts	3
Ignition Time (Max)	1185 s
Ignition Voltage (Max)	5.0 kV
Ignition Voltage (Min)	2.8 kV
Response Voltage	195 V
Mains Voltage	-8%~+6%
Performance (AC)	
Mains Voltage Safety (AC)	-10%~+10%
Power Losses (Nom)	1.0 W

### • Wiring

Ballast Contact Wire Cross Section	0.70-2.50 mm <sup>2</sup>
Connector Type	Screw

### • System characteristics

Rated Ballast-Lamp Power	35-600 W
--------------------------	----------

### • Temperature

T-Ambient (Max)	85 °C
T-Ambient (Min)	-20 °C
T-Case Maximum (Max)	90 °C

### • Mechanical and Housing

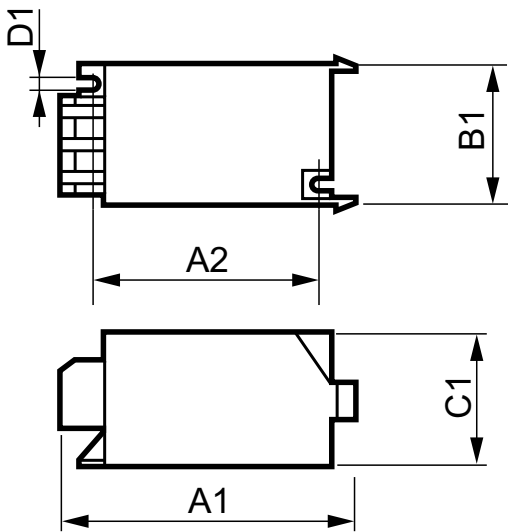
Housing	SNI-85
---------	--------

### • Product Data

Full product code	871150093068230
Order product name	SN D 58 220-240V 50/60Hz
EAN/UPC - Product	8711500930682
Order code	913700185166
Numerator - Quantity Per Pack	1
Numerator - Packs per outer box	48
Material Nr. (12NC)	913700185166
Net Weight (Piece)	0.050 kg

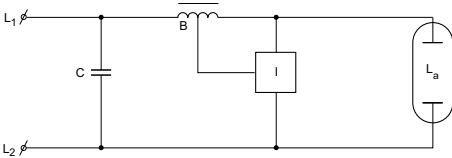
**PHILIPS**

## Dimensional drawing



### SND 58 220-240V 50/60Hz

Product	D1	C1	A1	A2	B1
SND 58 220-240V 50/60Hz	4.3 mm	38.5 mm	84.5 mm	65.0 mm	41.5 mm



© 2015 Philips Lighting Holding B.V.  
All rights reserved.

Specifications are subject to change without notice. Trademarks are the property of Koninklijke Philips N.V. (Royal Philips) or their respective owners.

[www.philips.com/lighting](http://www.philips.com/lighting)

2015, December 24  
data subject to change