



# HID ignitors for series systems

SN D 57 220-240V 50/60Hz

HID ignitors for series systems

## Product data

### • General Information

Application Code	57
Lamp Type	SON
Number Of Lamps	1 piece/unit

### • Operating and Electrical

Input Voltage	220 to 240 V
Input Frequency	50-60.1 Hz
Ignitor Type	Semi-Parallel
Ignition Attempts	3
Ignition Time (Max)	1185 s
Ignition Voltage (Max)	2.5 kV
Ignition Voltage (Min)	1.8 kV
Response Voltage	195 V
Mains Voltage	-8%~+6%
Performance (AC)	
Mains Voltage Safety (AC)	-10%~+10%
Power Losses (Nom)	1.0 W

### • Wiring

Ballast Contact Wire	0.70-2.50 mm <sup>2</sup>
Cross Section	
Connector Type	Screw

### • System characteristics

Rated Ballast-Lamp Power	50/70 W
--------------------------	---------

### • Temperature

T-Ambient (Max)	85 °C
T-Ambient (Min)	-20 °C
T-Case Maximum (Max)	90 °C

### • Mechanical and Housing

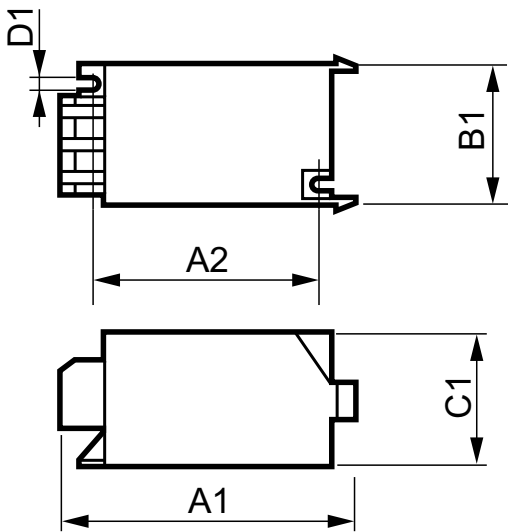
Housing	SNI-85
---------	--------

### • Product Data

Full product code	871150093066830
Order product name	SN D 57 220-240V 50/60Hz
EAN/UPC - Product	8711500930668
Order code	913700184966
Numerator - Quantity Per Pack	1
Numerator - Packs per outer box	48
Material Nr. (12NC)	913700184966
Net Weight (Piece)	0.050 kg

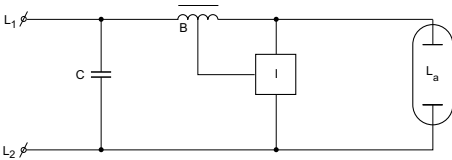
**PHILIPS**

## Dimensional drawing



SND 57 220-240V 50/60Hz

Product	D1	C1	A1	A2	B1
SND 57 220-240V 50/60Hz	4.3 mm	38.5 mm	84.5 mm	65.0 mm	41.5 mm



© 2015 Philips Lighting Holding B.V.  
All rights reserved.

Specifications are subject to change without notice. Trademarks are the property of Koninklijke Philips N.V. (Royal Philips) or their respective owners.

[www.philips.com/lighting](http://www.philips.com/lighting)

2015, December 23  
data subject to change