



HID ignitors for series systems

SN 59 220-240V 50/60Hz

HID ignitors for series systems

Product data

• General Information

Application Code	59
Lamp Type	SON/MHN
Number Of Lamps	1 piece/unit

• Operating and Electrical

Input Voltage	220 to 240 V
Input Frequency	50-60 1 Hz
Igniton Type	Semi-Parallel
Number Of Ignition Pulses	2
Ignition Voltage (Max)	5.00 kV
Response Voltage	196 V
Mains Voltage	-8%+6%
Performance (AC)	
Mains Voltage Safety (AC)	-10%+10%
Power Losses (Nom)	1.0 W

• Wiring

Cable Capacity	4 nF
Wires Device To Lamp (Nom)	
Wire Striplength	6.0 mm
Ballast Contact Wire Cross Section	0.70-2.50 mm ²
Connector Type	Screw

• System characteristics

Rated Ballast-Lamp Power	1000/1800 W
--------------------------	-------------

• Temperature

T-Ambient (Max)	75 °C
T-Ambient (Min)	-20 °C
T-Storage (Max)	80 °C
T-Storage (Min)	-25 °C
T-Case Maximum (Max)	80 °C

• Mechanical and Housing

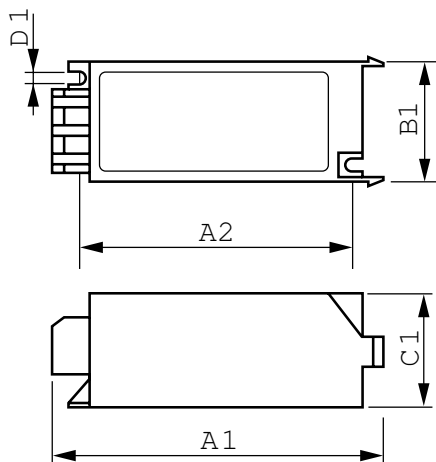
Housing	SNI-115
---------	---------

• Product Data

Full product code	871150091557330
Order product name	SN 59 220-240V 50/60Hz
EAN/UPC - Product	8711500915573
Order code	913619659966
Numerator - Quantity Per Pack	1
Numerator - Packs per outer box	20
Material Nr. (12NC)	913619659966
Net Weight (Piece)	0.090 kg

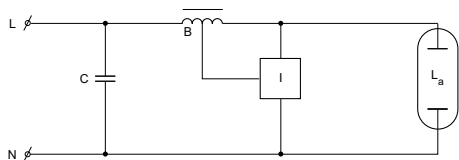
PHILIPS

Dimensional drawing



SN 59 220-240V 50/60Hz

Product	D1	C1	A1	A2	B1
SN 59 220-240V 50/60Hz	4.3 mm	38.0 mm	114.5 mm	95.0 mm	41.0 mm



© 2015 Philips Lighting Holding B.V.
All rights reserved.

Specifications are subject to change without notice. Trademarks are the property of Koninklijke Philips N.V. (Royal Philips) or their respective owners.

www.philips.com/lighting

2015, December 24
data subject to change