

HF-Matchbox Red

HF-M RED 114 SH TL/TL5/PL-C/S 230-240V

HF-Matchbox Red is an affordable, reliable, compact, lightweight and high-frequency ballast for use with system wattages below 25 W in combination with TL mini, TL-D, TL5 and TL5c, PL-T/C, and PL-L/S lamps. The HF-M Red range has a robust design, meets all relevant international safety and performance standards and has an energy efficiency index (CELMA EEI) of A2.

Product data

• General Information

Lamp Type	TL/TL5/PL-C/S
Number Of Lamps	1 piece/unit
Number Of Products On MCB (16A Type B) (Nom)	101
Automatic Restart	Yes

• Operating and Electrical

Input Voltage	230 to 240 V
Input Frequency	50-60_1 Hz
Power Factor 100%	0.64
Load (Nom)	
Ignition Time (Max)	1.55 s
Mains Voltage Performance (AC)	-8%+6%
Mains Voltage Safety (AC)	-10%+10%
Power Losses (Nom)	2.9 W

• Wiring

Connector Type	Insert
Input Terminals	
Color Input Terminals	Blue
Color Output Terminals	Grey
Connector Type	Insert
Output Terminals	
Cable Length Hot Wiring	0.75 m
Wire Striplength	8.0-9.0 mm
Input Terminal Cross Section	0.50-1.50 mm ²

Output Terminal Cross Section	0.50-1.50 mm ²
-------------------------------	---------------------------

• System characteristics

Rated Ballast-Lamp Power	14 W
Rated Lamp Power On TL5	14 W
System Power On TL5	16 W
Lamp Power On TL5	13.1 W
Power Loss On TL5	2.9 W
System Power On PL-C	10.6 W
Rated Lamp Power On PL-C	14 W
Power Loss On PL-C	1.7 W
Lamp Power On PL-C	8.9 W

• Temperature

T-Ambient (Max)	50 °C
T-Ambient (Min)	-25 °C
T-Case Maximum (Max)	80 °C

• Mechanical and Housing

Housing	SH
---------	----

• Emergency Operation

Battery Voltage Lamp Ignition	190-254 V
-------------------------------	-----------

PHILIPS

HF-Matchbox Red

• Approval and Application

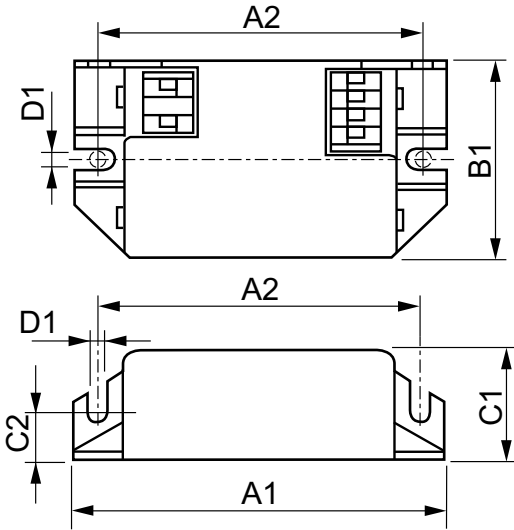
Approval Marks CE marking
 ENEC certificate

• Product Data

Full product code 871150093140530
 Order product name HF-M RED 114 SH TL/TL5/PL-C/S
 230-240V

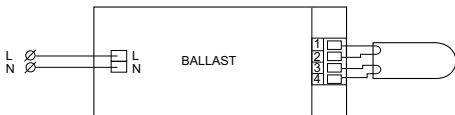
EAN/UPC - Product 8711500931405
 Order code 913700423266
 Numerator - Quantity Per Pack 1
 Numerator - Packs per outer box 50
 Material Nr. (12NC) 913700423266
 Net Weight (Piece) 0.034 kg

Dimensional drawing



HF-M RED 114 SH TL/TL5/PL-C/S 230-240V

Product	D1	C1	C2	A1	A2	B1
HF-M RED 114 SH TL/TL5/PL-C/S 230-240V	4.2 mm	22.0 mm	10.0 mm	80.0 mm	70.0 mm	40.0 mm



© 2015 Philips Lighting Holding B.V.
 All rights reserved.

Specifications are subject to change without notice. Trademarks are the property of Koninklijke Philips N.V. (Royal Philips) or their respective owners.

www.philips.com/lighting

2015, December 23
 data subject to change