

# HF-Selectalume II for TL5 lamps

HF-S 1 14-35 TL5 HE II 220-240V

HF-Selectalume II TL5 is the most cost-effective, reliable and outstanding solution for fluorescent lamps. These ballasts are part of an overall high-efficiency lighting system that may help you or your customers to achieve any international or local energy code you need to comply with. HF-Selectalume II TL5 ballasts are the ideal choice for a broad range of new construction and retrofit applications within the commercial sector, including general surface mounting or office lighting, parking garages, warehouses, waterproof and other applications.

## Product data

### • General Information

Application Code	HE II
Type Version	Not specified
Lamp Type	TL5
Number Of Lamps	1 piece/unit
Number Of Products	28
On MCB (16A Type B) (Nom)	
Automatic Restart	Yes

### • Operating and Electrical

Input Voltage	220 to 240 V
Input Frequency	50-60_1 Hz
Operating Frequency (Nom)	45 kHz
Crestfactor (Nom)	1.7
Power Factor 100% Load (Nom)	0.99
Preheat Time	0.5 s
Mains Voltage	202-254V-8%+6%
Performance (AC)	
Mains Voltage Safety (AC)	198-264V-10%-+10%
Earth Leakage Current (Max)	0.5 mA
Inrush Current	0.25 ms
Width	
Ballast Factor (Nom)	1
Power Losses (Nom)	2.0-3.5 W
Inrush Current Peak (Max)	24 A

### • Wiring

Connector Type	WAGO 744 connector
Input Terminals	

Cable Capacity	200 pF
Output Wires Mutual (Max)	
Connector Type	WAGO 744 connector [ Suitable for manual wiring]
Output Terminals	
Cable Length Hot Wiring	0.75 m
Wire Striplength	8.0-9.0 mm
Dual Fixture Master/Slave	Possible, lamp wires 2m max. length [ Master/Slave operation possible]
Input Terminal Cross Section	0.50-1.00 mm <sup>2</sup>
Output Terminal Cross Section	0.50-1.00 mm <sup>2</sup>
Cable Capacity Cold	200 pF
Output Wires - Earth (Max)	
Cable Capacity Hot	200 pF
Output Wires - Earth (Max)	

### • System characteristics

Rated Ballast-Lamp Power	14-35 W
Rated Lamp Power On TL5 HE	14/35 W
System Power On TL5 HE	16.7/40.5 W
Lamp Power On TL5 HE	14.7/37.0 W
Power Loss On TL5 HE	2.0/3.5 W

### • Temperature

T-Ambient (Max)	55 °C
-----------------	-------

**PHILIPS**

## HF-Selectalume II for TL5 lamps

T-Ambient (Min)	-20 °C
T-Storage (Max)	50 °C
T-Storage (Min)	-40 °C
T-Case Lifetime (Nom)	75 °C
T-Case Maximum (Max)	75 °C

### • Mechanical and Housing

Housing	L360x30x22
---------	------------

### • Emergency Operation

Nominal Light Output After 60 Seconds	100% of EBLF
Normal Operating Voltage (DC)	220-240 V
Battery Voltage	176-275 V
Guaranteed Operation	
Battery Voltage	186-275 V
Guaranteed Ignition	
Emergency Ballast Lumen Factor (EBLF) (Nom)	0.7 %
Nominal Light Output After 5 Seconds	50% of EBLF

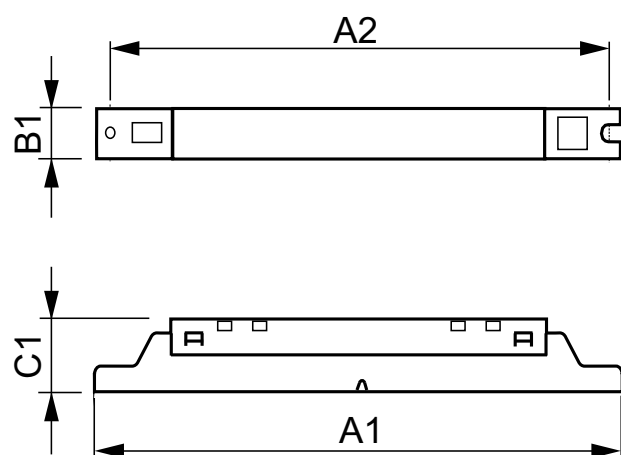
### • Approval and Application

Energy Efficiency Index	A2 BAT
EMI 9 kHz ... 30 MHz	EN55015
Vibration Standard	IEC 68-2-6 Fc
Bumps Standard	IEC 68-2-29 Eb
Approval Marks	CE marking ENEC certificate CCC certificate C-Tick certificate TISI marking SIRIM approval CCC certificate
Hum And Noise Level	30 dB(A)

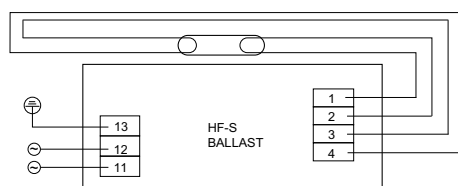
### • Product Data

Full product code	871829175842600
Order product name	HF-S 1 14-35 TL5 HE II 220-240V
EAN/UPC - Product	8718291758426
Order code	913713042066
Numerator - Quantity Per Pack	1
Numerator - Packs per outer box	12
Material Nr. (12NC)	913713042066
Net Weight (Piece)	0.260 kg

## Dimensional drawing



HF-S 1 14-35 & 2 14-35 TL5 HE II, 1 80 TL5/PL-L II



HF-S 1 14-35 TL5 HE II, HF-S 1 80 TL5/PL-L II

### HF-S 1 14-35 TL5 HE II 220-240V 50/60Hz

Product	D1	C1	A1	A2	B1
HF-S 1 14-35 TL5 HE II 220-240V	4.2 mm	22.0 mm	360.0 mm	350.0 mm	30.0 mm



© 2016 Philips Lighting Holding B.V.  
All rights reserved.

Specifications are subject to change without notice. Trademarks are the property of Koninklijke Philips N.V. (Royal Philips) or their respective owners.

[www.philips.com/lighting](http://www.philips.com/lighting)

2016, March 15  
data subject to change