



# HF-Regulator Intelligent Touch DALI for PL-T/C and TL5C

## HF-Ri TD 1 26-42 PL-T/C E+

Intelligent high-frequency electronic dimming ballast, using DALI (Digital Addressable Lighting Interface according to IEC62386) or Touch and Dim push-button protocol for fluorescent lamps. Features Corridor Mode, programmable with Philips MultiOne. High-frequency operation improves light quality and lamp lifetime. Pre-empting upcoming legislation as it meets A1BAT requirements.

## Product data

### • General Information

Application Code	E+
Type Version	Not specified
Lamp Type	PL-T/C
Number Of Lamps	1 piece/unit
Number Of Products	28
On MCB (16A Type B) (Nom)	
Automatic Restart	Yes

### • Operating and Electrical

Input Voltage	195-240 V
Input Frequency	50-60_1 Hz
Ignition Method	Warm Start
Crestfactor (Max)	1.7
Power Factor 100%	0.95
Load (Nom)	
Ignition Time (Max)	1 s
Mains Voltage	-8%+6%
Performance (AC)	
Mains Voltage Safety (AC)	-10%+10%
Earth Leakage Current (Max)	0.5 mA
Inrush Current	0.35 ms
Width	
Standby Power Consumption (Max)	0.27 W
Ballast Factor (Nom)	1
Power Losses (Nom)	2.7 W
Inrush Current Peak (Max)	27 A

### • Wiring

Connector Type	WAGO 250 series
Input Terminals	
Cable Capacity	150 pF
Output Wires Mutual (Max)	
Connector Type	WAGO 250 series
Output Terminals	
Connector Type	WAGO 250 series
Control Input Terminals	
Wire Striplength	8.0-9.0 mm
Dual Fixture Master/Slave	Yes [ Master/Slave operation possible]
Control Input Terminal Cross Section	0.50-1.50 mm <sup>2</sup>
Input Terminal Cross Section	0.50-1.50 mm <sup>2</sup>
Output Terminal Cross Section	0.50-1.50 mm <sup>2</sup>
Auto Insert (ALF/ADS) Wire Cross Section	0.50-1.50 mm <sup>2</sup>
Cable Capacity	150 pF
Output Wires To Earth (Max)	

### • System characteristics

Rated Ballast-Lamp Power	26-42 W
Rated Lamp Power On PL-T/C	26 W
Rated Lamp Power On PL-T	32/42 W

**PHILIPS**

# HF-Regulator Intelligent Touch DALI for PL-T/C and TL5C

Rated Lamp Power On TL5C	22/40 W
System Power On PL-T/C	27.7 W
System Power On PL-T	33.9/44.1 W
System Power On TL5C	25.7/41.5 W
Power Loss On PL-T/C	2.7 W
Power Loss On PL-T	2.9/3.1 W
Power Loss On TL5C	2.7/3.0 W
Lamp Power On TL5C	23/38.5 W
Lamp Power On PL-T	31/41 W
Lamp Power On PL-T/C	25 W

## • Temperature

T-Ambient (Max)	50 °C
T-Ambient (Min)	-25 °C
T-Storage (Max)	80 °C
T-Storage (Min)	-40 °C
T-Case Lifetime (Max)	75 °C
T-Case Maximum (Max)	75 °C
T-Ignition (Max)	50 °C
T-Ignition (Min)	-25 °C

## • Controls and Dimming

Control Interface	TD
Regulating Level	3%-100%
Power	
Control Input Protection	Yes (Basic insulation)

## • Mechanical and Housing

Housing	L 123x79x33
---------	-------------

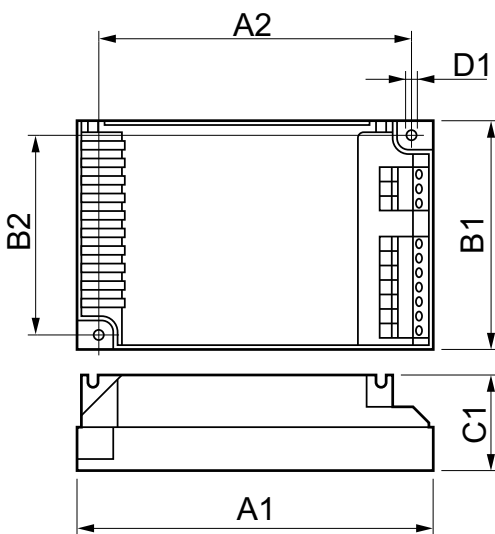
## • Approval and Application

Energy Efficiency Index	A1 BAT
EMI 9 kHz ... 30 MHz	EN55015
EMI 30 MHz ... 1000 MHz	EN 55022 Class B
Safety Standard	IEC 61347-2-3
Performance Standard	IEC 60929
Quality Standard	ISO 9000:2000
Environmental Standard	ISO 14001
Harmonic Current Emission Standard	IEC 61000-3-2
EMC Immunity Standard	IEC 61547
Vibration Standard	IEC 68-2-6 Fc
Bumps Standard	IEC 68-2-29 Eb
Humidity Standard	EN 61347-2-3 clause 11
Approval Marks	EMC CE marking ENEC certificate CCC certificate
Temperature Marking	Yes
Emergency Standard	IEC 60598-2-22
Hum And Noise Level	Inaudible

## • Product Data

Full product code	871829124167600
Order product name	HF-Ri TD 1 26-42 PL-T/C E+
EAN/UPC - Product	8718291241676
Order code	913700684766
Numerator - Quantity Per Pack	1
Numerator - Packs per outer box	12
Material Nr. (12NC)	913700684766
Net Weight (Piece)	0.200 kg

## Dimensional drawing



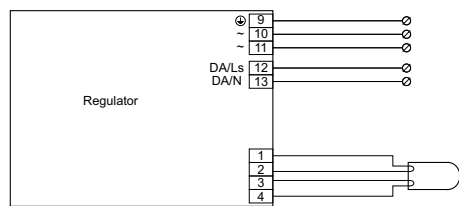
HF-Ri TD PL-T/C E+

## HF-Ri TD 1 26-42 PL-T/C E+

# HF-Regulator Intelligent Touch DALI for PL-T/C and TL5C

## Dimensional drawing

Product	D1	C1	A1	A2	B1	B2
HF-Ri TD 1 26-42 PL-T/C E+	4.5 mm	33.0 mm	123.0 mm	111.0 mm	79.0 mm	67.0 mm



HF-Ri TD 1 26-42 PL-T/C E+



© 2015 Philips Lighting Holding B.V.  
All rights reserved.

Specifications are subject to change without notice. Trademarks are the property of Koninklijke Philips N.V. (Royal Philips) or their respective owners.

[www.philips.com/lighting](http://www.philips.com/lighting)

2015, December 24  
data subject to change