



CoreLine SlimDownlight

DN145B LED20S/840 PSU II WH

840 neutral white - Power supply unit - Safety class II - White

CoreLine SlimDownlight is a range of ultra-thin recessed luminaires designed to replace downlight luminaires based on CFL-ni/CFL-I lamp technology. The product's attractive TCO makes it easy for customers to make the switch to LED. CoreLine SlimDownlight delivers a natural 'surface of light' effect for use in general lighting applications. It also offers instant energy savings and a much longer lifetime, making it a real value-for-money and environmentally friendly solution. Installation is easy, as the luminaire fits the same size of cut-out and has an extremely small build-in depth. InterAct Ready luminaire with integrated wireless communications to be used with InterAct gateways, sensors and software.

Product data

General Information		Operating and Electrical	
Beam angle of light source	- °	Glow-wire test	Temperature 650 °C, duration 30 s
Light source color	840 neutral white	Flammability mark	For mounting on normally flammable surfaces
Light source replaceable	No	CE mark	CE mark
Number of gear units	1 unit	ENEC mark	ENEC mark
Driver/power unit/transformer	Power supply unit	Warranty period	5 years
Driver included	Yes	Constant light output	No
Optic type	Beam angle 90°	Number of products on MCB of 16 A type B	13
Luminaire light beam spread	84°	RoHS mark	RoHS mark
Control interface	-	Unified glare rating CEN	28
Connection	Connection unit 2-pole		
Cable	-		
Protection class IEC	Safety class II	Input Voltage	220 to 240 V

CoreLine SlimDownlight

Input Frequency	50 or 60 Hz
Initial CLO power consumption	21 W
Inrush current	28.9 A
Inrush time	0.0016 ms
Power Factor (Min)	0.9

Controls and Dimming

Dimmable	No
----------	----

Mechanical and Housing

Housing Material	Aluminum die cast
Reflector material	-
Optic material	Polymethyl methacrylate
Optical cover/lens material	Polystyrene
Fixation material	-
Optical cover/lens finish	Opal
Overall height	28 mm
Overall diameter	215 mm
Color	White

Approval and Application

Ingress protection code	IP20/44 [Finger-protected; wire-protected, splash-proof]
Mech. impact protection code	IK02 [0.2 J standard]

Initial Performance (IEC Compliant)

Initial luminous flux (system flux)	2100 lm
Luminous flux tolerance	+/-10%
Initial LED luminaire efficacy	100 lm/W
Init. Corr. Color Temperature	4000 K
Init. Color Rendering Index	>80
Initial chromaticity	(0.38212,0.38031) SDCM<3

Initial input power	21 W
Power consumption tolerance	+/-10%

Over Time Performance (IEC Compliant)

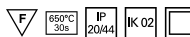
Control gear failure rate at median useful life	5 %
50000 h	
Median useful life L70B50	57000 h
Median useful life L80B50	35000 h
Median useful life L90B50	16000 h
Lumen maintenance at median useful life*	L70
50000 h	

Application Conditions

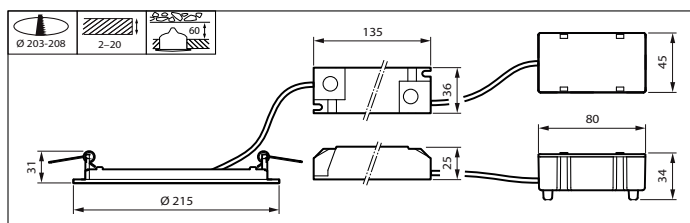
Ambient temperature range	0 to +35 °C
Performance ambient temperature Tq	25 °C
Maximum dim level	Not applicable
Suitable for random switching	Yes (relates to presence/ movement detection)

Product Data

Full product code	871016333950499
Order product name	DN145B LED20S/840 PSU II WH
EAN/UPC - Product	8710163339504
Order code	911401806280
Numerator - Quantity Per Pack	1
Numerator - Packs per outer box	10
Material Nr. (12NC)	911401806280
Net Weight (Piece)	0.520 kg



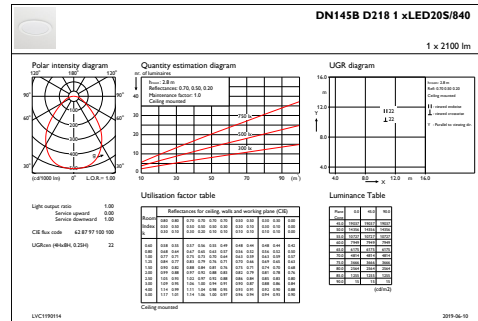
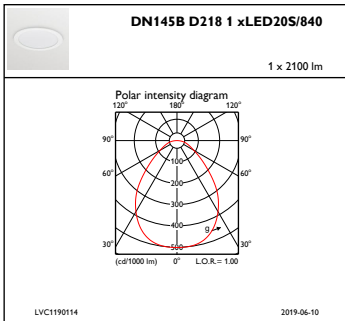
Dimensional drawing



CoreLine SlimDownlight

CoreLine SlimDownlight

Photometric data



IFPC1_DN145BD2181xLED20S840

IFGU1_DN145BD2181xLED20S840

