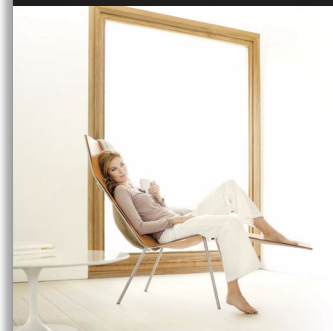


Philips Ledino
Ceiling light

Ledino



69068/31/16

Giving light a new experience

Power with control. Illuminate every corner of your home with this dimmable family of high power ceiling and wall lights with a hint of modernist industrial-chic design.

Elegant design meets innovative technology

- Warm white light effect
- High Power LED
- High light quality with strong light output
- Adjustable light intensity with dimmer switch

Sustainable light solutions

- Extremely long operating life
- Saves up to 80% energy

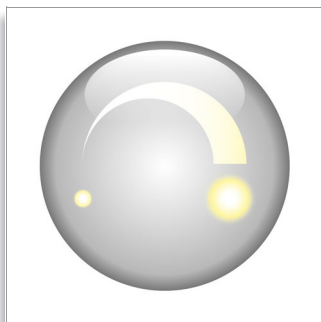


asimpleswitch.com

PHILIPS
sense and simplicity

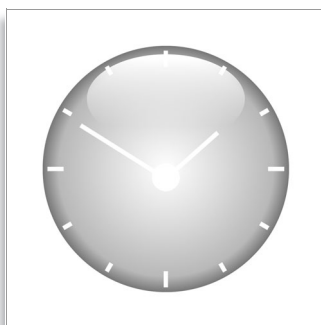
Highlights

Dimmable



Most Philips LED luminaires are dimmable, which means that their light level can be adjusted with a dimmer switch. The dimming indication is always mentioned on the product packaging and in the manual that is delivered in the box. Most Philips LED luminaires can be dimmed by means of an external trailing edge wall dimmer (not included in the product box). These dimmers are compatible with electronic (capacitive) transformers and LED drivers. Philips tested a number of wall dimmers that have proved to be compliant. A list of compatible dimmers is available in the downloads and support section.

Extremely long operating life



A light source you can trust. Philips LED luminaires offer an extremely long-life of at least 20,000 hours (which equals 20 years on a basis of an average use of 3 hours/day with an amount of at least of 13,000 on/off switching cycles). It feels so comfortable to think that

you won't have to worry about maintenance or lamp replacement while having the perfect light ambiance in your home.

High light quality

A module of 7.5 W produces the equivalent light output as a 40 W incandescent lamp (350 Lumen) with strong light output.

High Power LED



The LED module is a uniquely developed solution by Philips combining 3 LEDs in a synthetic and aluminium housing. This technique enables an optimal light output and a 100% uniform light colour. The LED modules exist in two variants: spot puck for a directional light effect or diffuse puck to create a diffuse light effect.

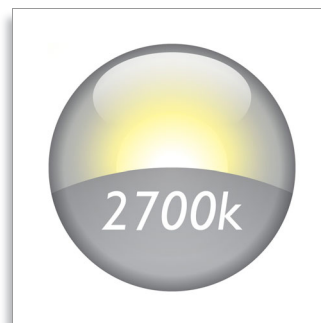
Saves up to 80% energy



The LED lighting technology used in Philips luminaires is highly energy-efficient (7.5 W

module produces 350 Lumen). As a result, every luminaire conserves energy, helping consumers to save money on their electricity bills and contribute to preserving the environment. For home lighting that's energy-efficient and provides great light in a range of contemporary designs, look for Philips LED products.

Warm white light effect



Light up your home with warm white light effects thanks to the latest LED innovation. Philips introduces the latest generation of warm white light high power LEDs, reaching a colour temperature of 2700 Kelvin. This innovation brings our luminaires to the next level, allowing you to combine elegance and ambience creation with light and energy efficiency.

Specifications

Power

- Power supply: 220-240 V, 50/60 Hz
- Output: SELV
- Energy consumption: 1 x 7.5 W
- Class of protection: I

Design and finishing

- Colour(s): white
- Material: aluminium

Technical specifications

- Light source: 1 LED module
- Light colour: 2700 k warm white
- IP code: IP20
- Life span: 20 years
- Room: bedroom and living room, kitchen
- Type: ceiling light

- Style: modern
- Price range: basic

Extra features

- Dimmable
- Warranty: 2 year(s)

Product dimensions and weight

- Length: 12.7 cm
- Width: 12.7 cm
- Height: 5.5 cm
- Net weight: 0.7 kg

Packaging

- Height: 15 cm
- Length: 14.5 cm
- Width: 7.5 cm
- Gross weight: 0.8 kg



Issue date 2011-02-04

Version: 2.0.1

12 NC: 9150 024 67401
EAN: 87 17943 74285 1

© 2011 Koninklijke Philips Electronics N.V.
All Rights reserved.

Specifications are subject to change without notice.
Trademarks are the property of Koninklijke Philips
Electronics N.V. or their respective owners.

www.philips.com