



# MASTER LEDtube InstantFit HF T5



## MAS LEDtube HF 1500mm HO 26W 865 T5 OE

The Philips MASTER LEDtube integrates a LED light source into a traditional fluorescent form factor. Its unique design creates a perfectly uniform visual appearance, which cannot be distinguished from traditional fluorescent. These T5 lighting tubes are the right choice for absolute performance and are designed to stand up to everyday conditions. Unparalleled savings thanks to low energy consumption and an exceptionally long lifetime make these T5 LED tubes the choice for every demanding application.

### Product data

General Information	
Cap-Base	G5
Nominal lifetime	60,000 hour(s)
Switching Cycle	50,000
Lighting Technology	LED
Flux measurement reference	Sphere
Light Technical	
Color Code	865 [CCT of 6500K]
Beam Angle (Nom)	200 degree(s)
Luminous Flux	3,900 lm
Color Designation	Cool Daylight
Correlated Color Temperature (Nom)	6500 K
Luminous Efficacy (rated) (Nom)	150 lm/W
Color Consistency	<6
Color rendering index (CRI)	80
LLMF At End Of Nominal Lifetime (Nom)	70 %

Photobiological safety according to EN 62471	RG0
Operating and Electrical	
Line Frequency	20K to 140K Hz
Input Frequency	20K to 140K Hz
Power Consumption	26 W
Lamp Current (Max)	420 mA
Lamp Current (Min)	150 mA
Starting Time (Nom)	0.5 s
Warm-up time to 60% light	0.5 s
Power Factor (Fraction)	0.9
Voltage (Nom)	60-120 V
Ballast Compatibility	HF
LED alternative to fluorescent lamp power	49 W
Inrush current at mains	-
Max. lamp no. on MCB B type 10A - Mains	-
Max. lamp no. on MCB B type 10A – EM ballast without Compensation Capacitor.	-

MASTER LEDtube InstantFit HF T5

Max. lamp no. on MCB B type 10A – EM ballast with Compensation Capacitor.	-
Max. lamp no. on MCB B type 16A – Mains	-
Max. lamp no. on MCB B type 16A – EM ballast without Compensation Capacitor.	-
Max. lamp no. on MCB B type 16A – EM ballast with Compensation Capacitor.	-

Temperature

T-Case Maximum (Nom)	50 °C
----------------------	-------

Controls and Dimming

Dimmable	Yes - Check ballast compatibility
----------	-----------------------------------

Mechanical and Housing

Bulb Finish	Frosted
Bulb Material	Glass
Product Length	1,500 mm
Bulb Shape	T5
Net Weight (Piece)	0.196 kg

Approval and Application

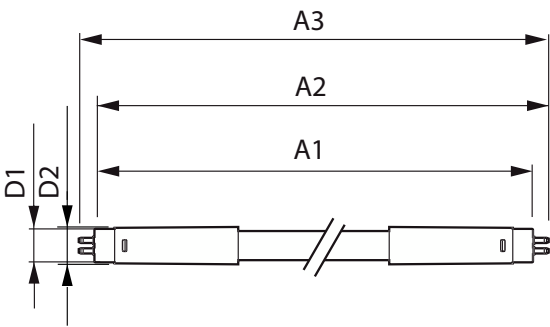
Energy Efficiency Class	D
-------------------------	---

Energy Saving Product	Yes
Approval Marks	RoHS compliance KEMA Keur certificate
Energy Consumption kWh/1000 h	26 kWh
EPREL Registration Number	1384145
CE mark	Yes
EU RoHS compliant	Yes
Ambient temperature range	-20 °C to 45 °C

Product Data

Order product name	MAS LEDtube HF 1500mm HO 26W 865 T5 OE
Full product name	MAS LEDtube HF 1500mm HO 26W 865 T5 OE
Full product code	871869974961300
Order code	929002352502
Material Nr. (12NC)	929002352502
Numerator - Quantity Per Pack	1
EAN/UPC - Product/Case	8718699749613
Numerator - Packs per outer box	10
EAN/UPC - Case	8718699749620

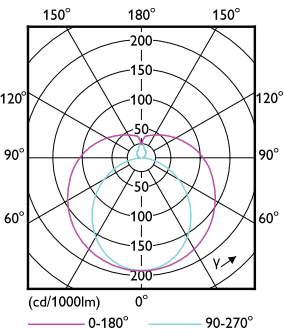
Dimensional drawing



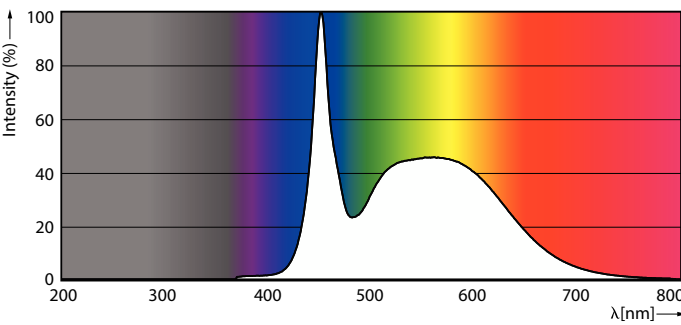
Product	D1	D2	A1	A2	A3
MAS LEDtube HF 1500mm HO 26W 865 T5 OE	15.5 mm	19 mm	1,449 mm	1,456 mm	1,463 mm

MASTER LEDtube InstantFit HF T5

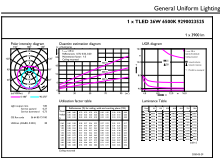
Photometric data



Light Distribution Diagram - MAS LEDtube HF 1500mm HO 26W 865 T5 OE

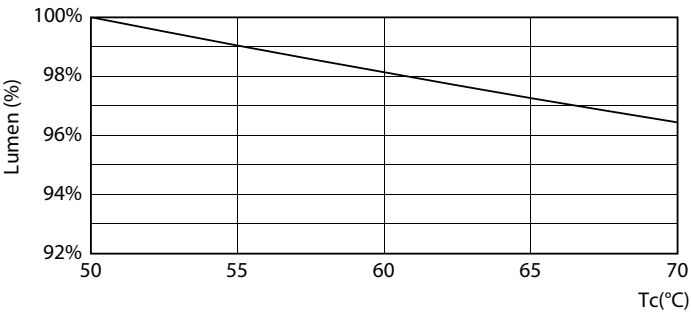


Spectral Power Distribution Colour - MAS LEDtube HF 1500mm HO 26W 865 T5 OE

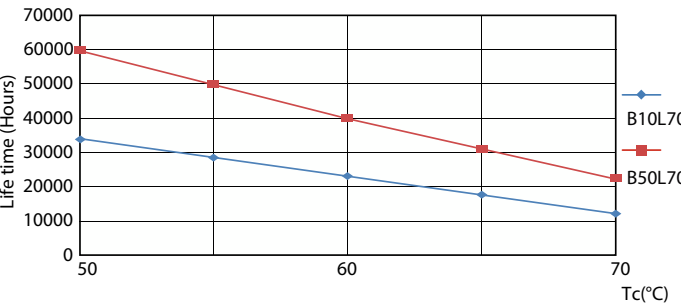


General uniform lighting - MAS LEDtube HF 1500mm HO 26W 865 T5 OE

Lifetime



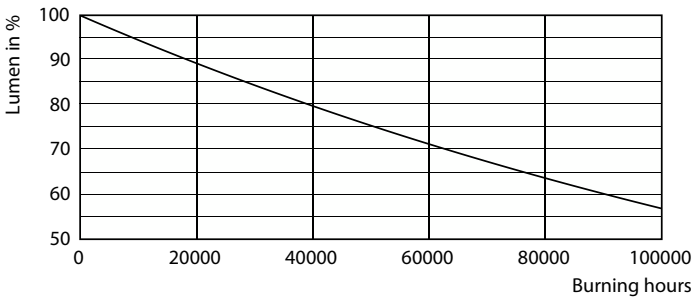
Lumen Maintenance Diagram - MAS LEDtube HF 1500mm HO 26W 865 T5 OE



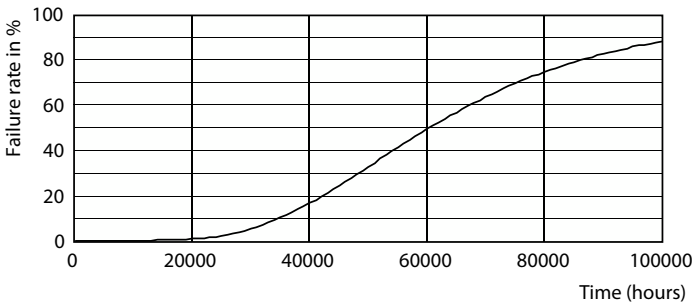
LEDtube 60K 5070 LifetimeVsTc-LED

MASTER LEDtube InstantFit HF T5

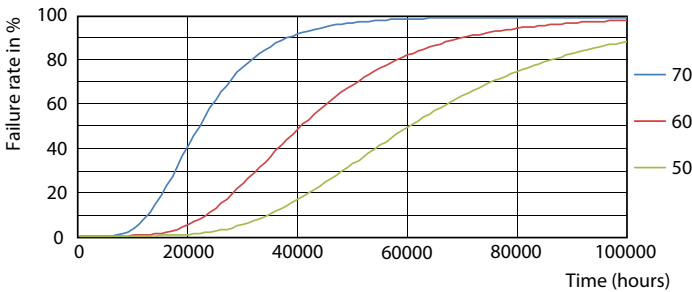
Lifetime



Lumen Maintenance Diagram - MAS LEDtube HF 1500mm HO 26W 865 T5 OE



Life Expectancy Diagram



LEDtube 60K 5070 FailureRate-LED

