



MASTER LEDtube InstantFit HF T5



MAS LEDtube HF 600mm HO 10.5W 840 T5

The Philips MASTER LEDtube integrates a LED light source into a traditional fluorescent form factor. Its unique design creates a perfectly uniform visual appearance, which cannot be distinguished from traditional fluorescent. These T5 lighting tubes are the right choice for absolute performance and are designed to stand up to everyday conditions. Unparalleled savings thanks to low energy consumption and an exceptionally long lifetime make these T5 LED tubes the choice for every demanding application.

Product data

General Information		LLMF At End Of Nominal Lifetime (Nom)	
Cap-Base	G5		70 %
Nominal lifetime	60,000 hour(s)	Photobiological safety according to EN 62471	RG0
Switching Cycle	50,000	Operating and Electrical	
Lighting Technology	LED	Line Frequency	10K to 120K Hz
Flux measurement reference	Sphere	Input Frequency	10K to 120K Hz
CE mark	Yes	Power Consumption	10.5 W
EU RoHS compliant	Yes	Lamp Current (Max)	350 mA
		Lamp Current (Min)	80 mA
		Starting Time (Nom)	0.5 s
		Warm-up time to 60% light	0.5 s
		Power Factor (Fraction)	0.9
		Voltage (Nom)	30-120 V
		LED alternative to fluorescent lamp power	24 W
		Inrush current at mains	-
		Max. lamp no. on MCB B type 10A - Mains	-
		Max. lamp no. on MCB B type 10A – EM ballast without Comp. Cap.	-
Light Technical			
Color Code	840 [CCT of 4000K]		
Beam Angle (Nom)	200 degree(s)		
Luminous Flux	1,600 lm		
Color Designation	Cool White (CW)		
Correlated Color Temperature (Nom)	4000 K		
Luminous Efficacy (rated) (Nom)	152 lm/W		
Color Consistency	<6		
Color rendering index (CRI)	80		

MASTER LEDtube InstantFit HF T5

Max. lamp no. on MCB B type 10A – EM ballast with Comp. Cap.	-
Max. lamp no. on MCB B type 16A – Mains	-
Max. lamp no. on MCB B type 16A – EM ballast without Comp. Cap.	-
Max. lamp no. on MCB B type 16A – EM ballast with Comp. Cap.	-
Ballast Compatibility	HF

Temperature

Ambient temperature range	-20 °C to 45 °C
T-Case Maximum (Nom)	55 °C

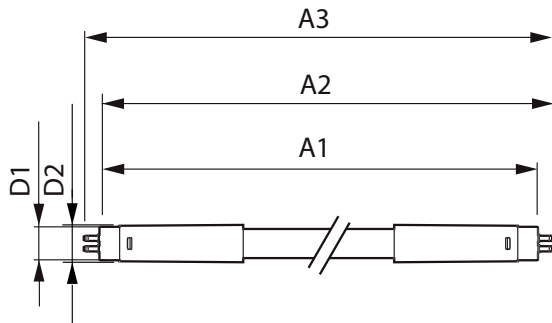
Controls and Dimming

Dimmable	Yes - Check ballast compatibility
----------	-----------------------------------

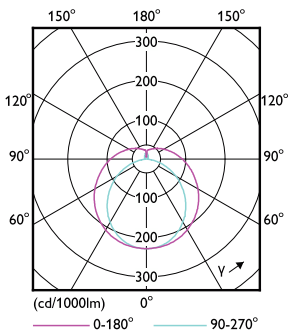
Mechanical and Housing

Bulb Finish	Frosted
Bulb Material	Glass
Product Length	600 mm
Bulb Shape	T5

Dimensional drawing



Photometric data



Light Distribution Diagram - MAS LEDtube HF 600mm HO 10.5W 840 T5

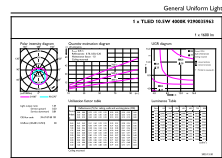
Approval and Application

Energy Efficiency Class	D
Energy Saving Product	Yes
Approval Marks	RoHS compliance TUV CE marking KEMA Keur certificate
Energy Consumption kWh/1000 h	11 kWh
EPREL Registration Number	1407658

Product Data

Order product name	MAS LEDtube HF 600mm HO 10.5W 840 T5
Full product name	MAS LEDtube HF 600mm HO 10.5W 840 T5
Full product code	872016916309600
Order code	929003596302
Material Nr. (12NC)	929003596302
Numerator - Quantity Per Pack	1
EAN/UPC - Product/Case	8720169163096
Numerator - Packs per outer box	10
EAN/UPC - Case	8720169163102

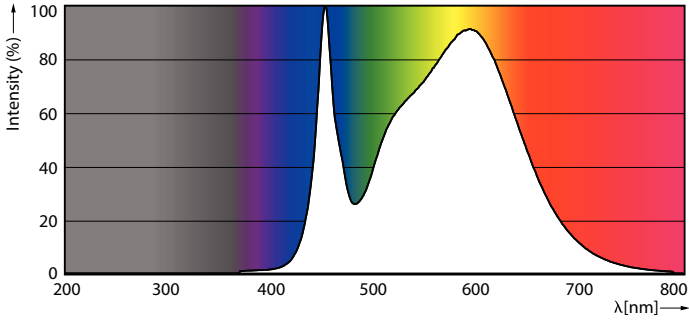
Product	D1	D2	A1	A2	A3
MAS LEDtube HF 600mm HO 10.5W 840 T5	15.5 mm	16/19 mm	549 mm	556 mm	563 mm



General uniform lighting - MAS LEDtube HF 600mm HO 10.5W 840 T5

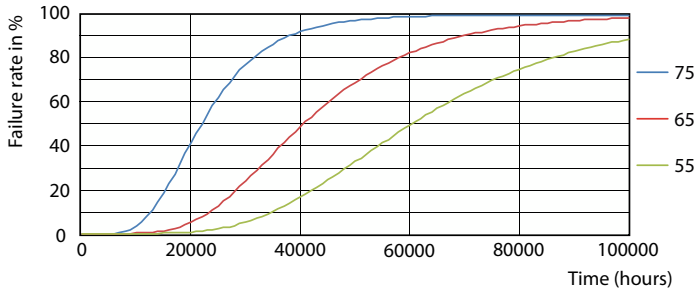
MASTER LEDtube InstantFit HF T5

Photometric data

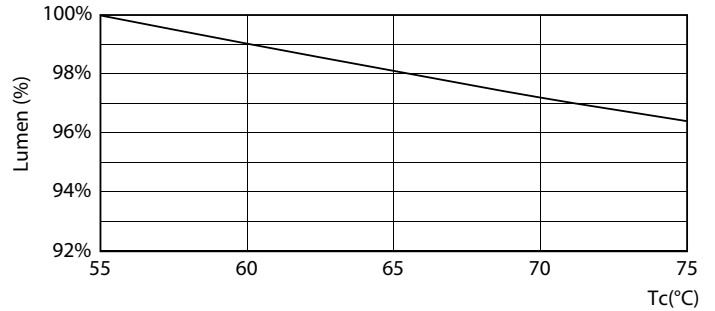


Spectral Power Distribution Colour - MAS LEDtube HF 600mm HO 10.5W 840 T5

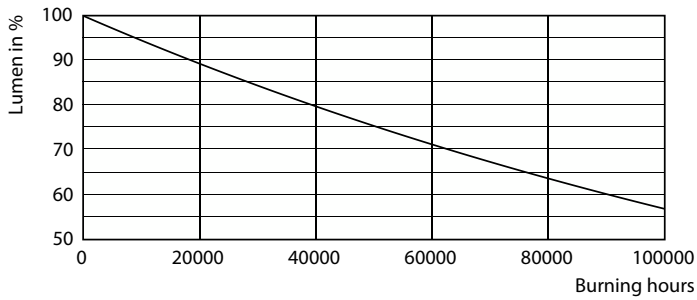
Lifetime



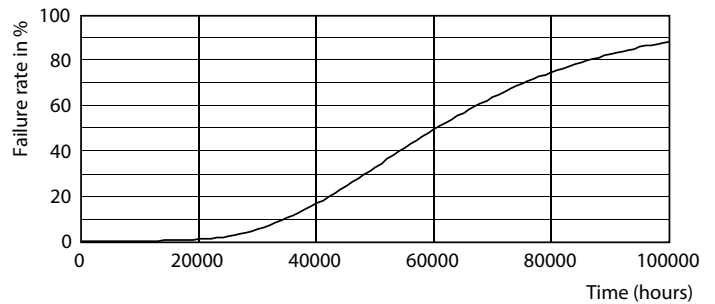
Life Expectancy Diagram - MAS LEDtube HF 600mm HO 10.5W 840 T5



Lumen Maintenance Diagram - MAS LEDtube HF 600mm HO 10.5W 840 T5



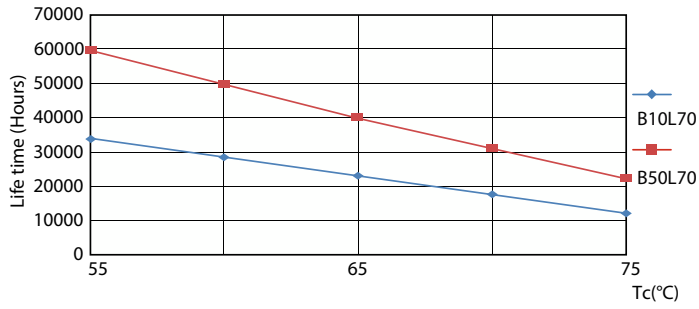
Lumen Maintenance Diagram - MAS LEDtube HF 600mm HO 10.5W 840 T5



Life Expectancy Diagram - MAS LEDtube HF 600mm HO 10.5W 840 T5

MASTER LEDtube InstantFit HF T5

Lifetime



Life Expectancy Diagram - MAS LEDtube HF 600mm HO 10.5W 840 T5

