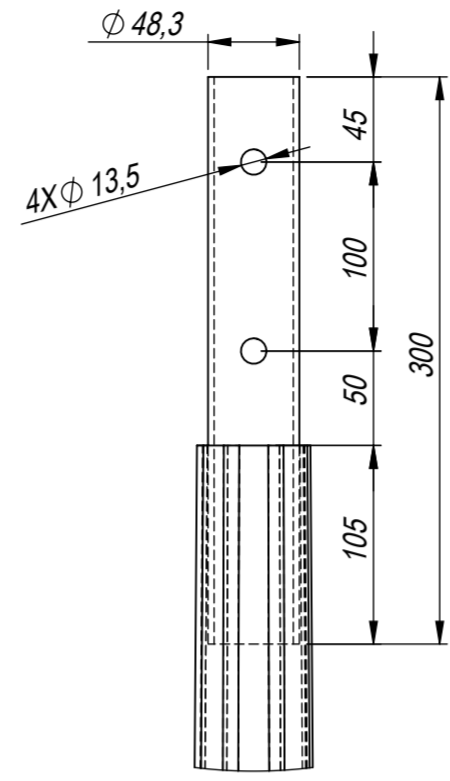
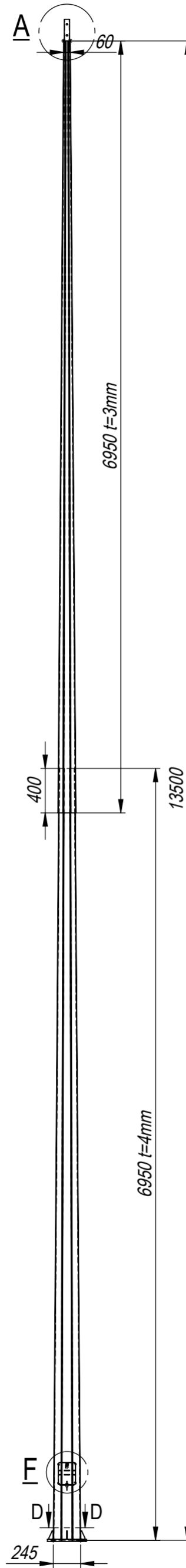
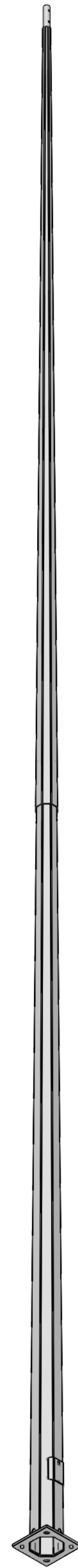
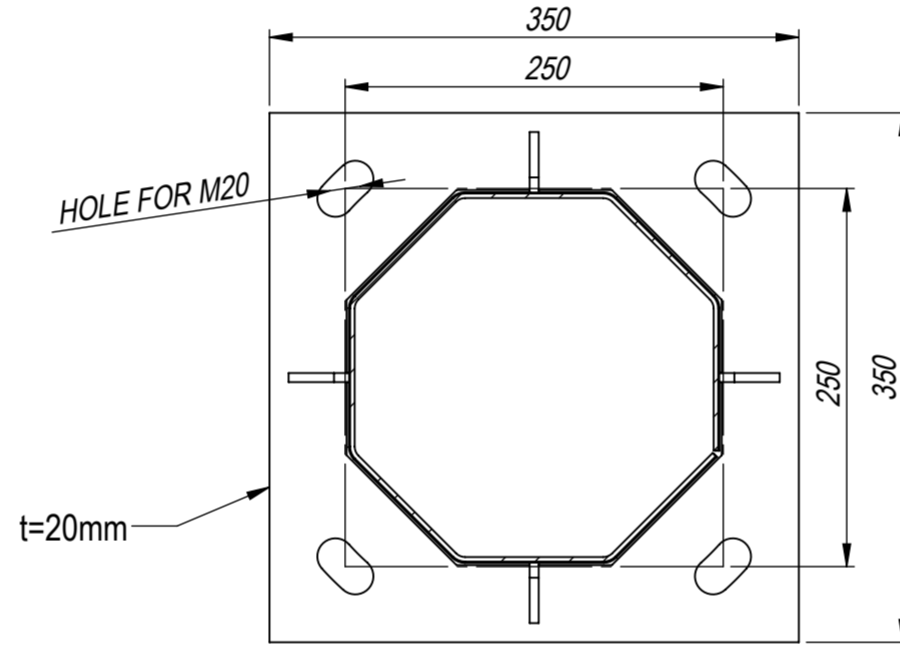


ALL RIGHTS RESERVED. REPRODUCTION OR ISSUE TO THIRD PARTIES IN ANY FORM WHATSOEVER IS NOT PERMITTED WITHOUT WRITTEN AUTHORITY FROM THE PROPRIETORS.

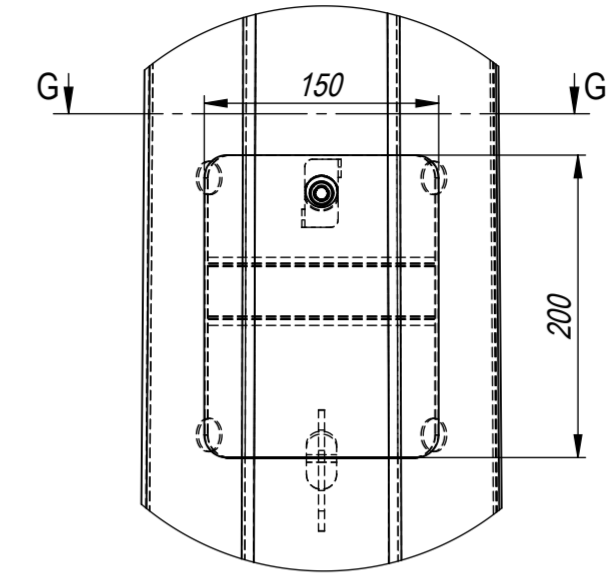
HER HAKKI MAHFUZDUR. YAZILI İZİN OLMADAN DOKÜMANLARIN HIÇ BİR KISMI KOPYA, KAYIT, BASIM VEYA DİĞER HERHANGİ BİR ŞEKİLDE ÇOĞALTILAMAZ VE YAYINLANAMAZ.



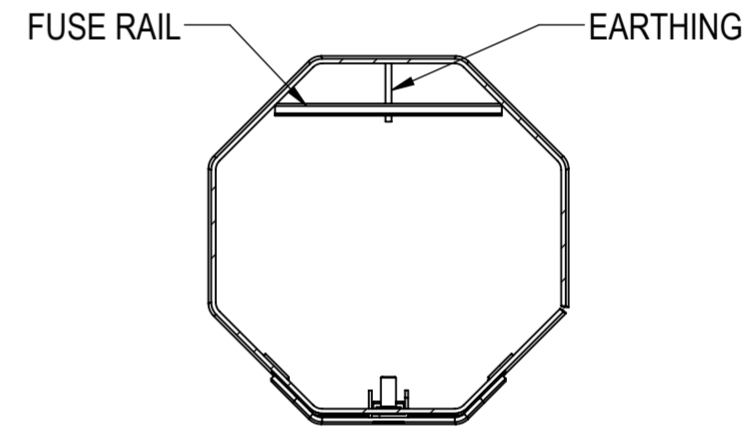
DETAIL A
SCALE: 1 / 4



D-D (1 : 5)



DETAIL F
SCALE: 1 / 5



G-G (1 : 5)

ANCHOR SET: AC SET 5

| REVİZYONLAR / REVISIONS | | | | | | |
|--|----------------------|---------------|---------------------|---------------------------------|--|----------|
| REV. | TANIM DESCRIPTION | TARİH DATE | İMZA SIGN | ONAY APPROVED | | |
| GENEL NOTLAR GENERAL NOTES | | | | | | |
| TÜM ÖLÇÜLER mm'DİR. ALL DIMENSIONS ARE IN mm. | | | | | | |
| TÜM ÇELİK ELEMANLAR, CIVATA, SOMUN VE RONDALALAR SICAK DALDIRMA GALVANİZDİR. (EN ISO 1461) | | | | | | |
| ALL STEEL ITEMS, BOLTS, NUTS & WASHERS TO BE HOT-DIP GALV. AS PER (EN ISO 1461) | | | | | | |
| TASARIM KRİTERLERİNE GÖRE CIVATALAR (ISO 898) 5.8 & 6.8 & 8.8 OLARAK KULLANILABİLİR. | | | | | | |
| BOLTS CAN BE USED AS (ISO 898) 5.8 & 6.8 & 8.8 ACCORDING TO DESIGN CRITERIA. | | | | | | |
| ADİ - SOYADI NAME - SURNAME | TARİH DATE | İMZA SIGN | MALZEME MATERIAL | TASARIM NOTLARI DESIGN NOTES | | |
| CİZEN DRAWN BY | NEKAPLAN | 18.12.2019 | GÖVDE SHAFT | S235 | TASARIM RÜZGAR HIZI DESIGN WIND SPEED | 130 km/H |
| KONTROL CONTROL | I.YUCEL | 18.12.2019 | FLANŞ FLANGE | S235 | GÜVENLİK KATSAYISI FACTOR OF SAFETY | 1.67 |
| ONAY APPROVAL | K.CANBALOGLU | 18.12.2019 | DİĞER OTHER | S235 | TASARIM STANDARTI DESIGN STANDART | |
| PAD2-140-30 OUTLINE | | | | | | |
| SİPTEK. NO ORDER NUMBER | STANDART | | | | | |
| PAFTA NO DRAWING NUMBER | PAD2-140-30 | | | | | |
| TARİH DATE | 19.12.2019 | | | | | |
| AĞIRLIK WEIGHT | | | | | | |
| BÖLÜM DEPARTMENT | POLİGON | SHEET 1 OF 1 | ÖLÇEK SCALE | 1:100 A2 | REV 0 | |

