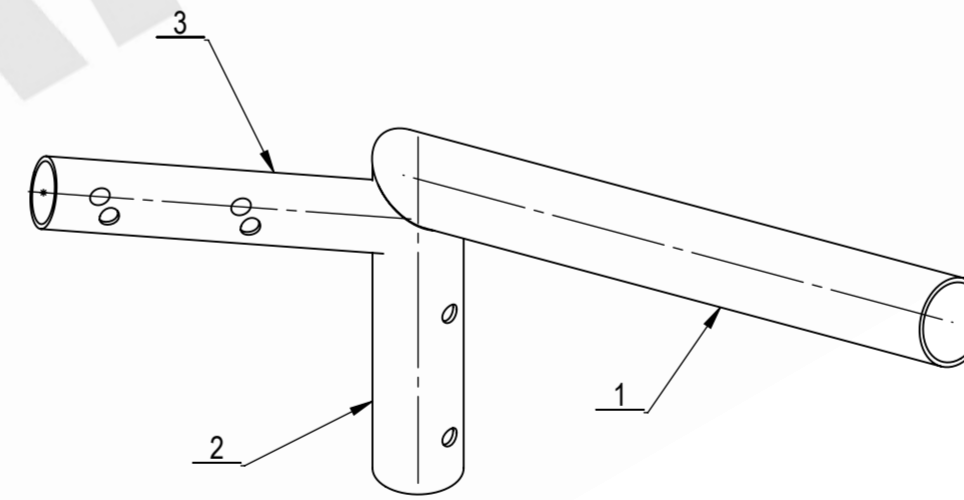
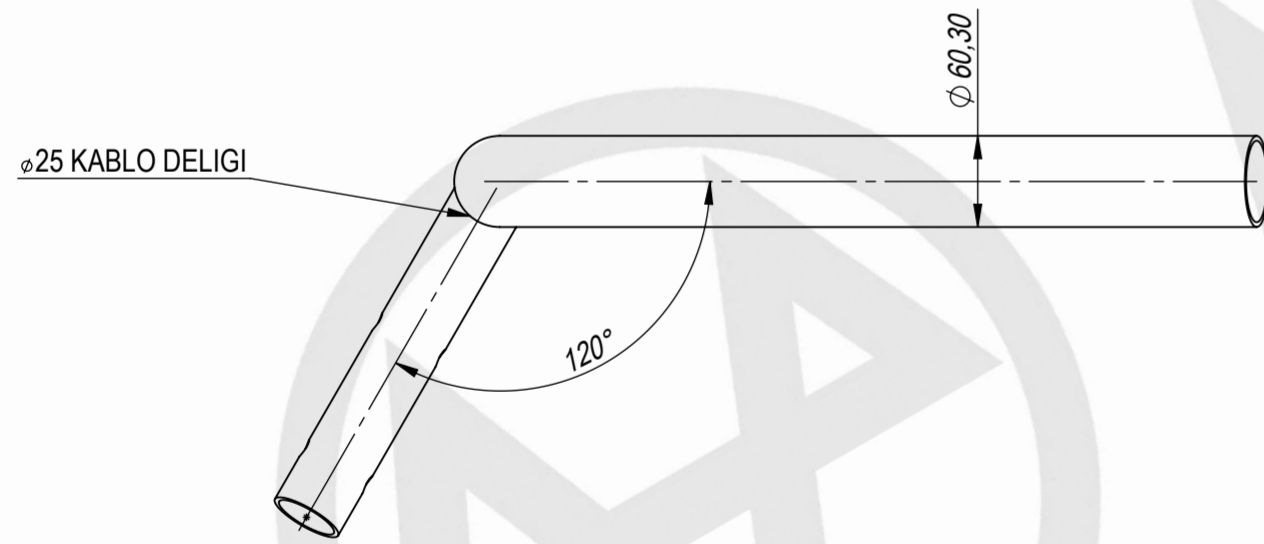
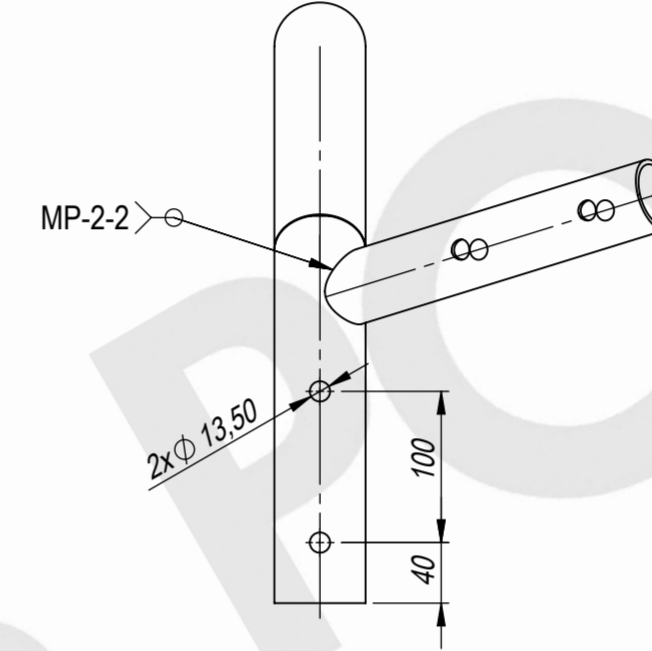
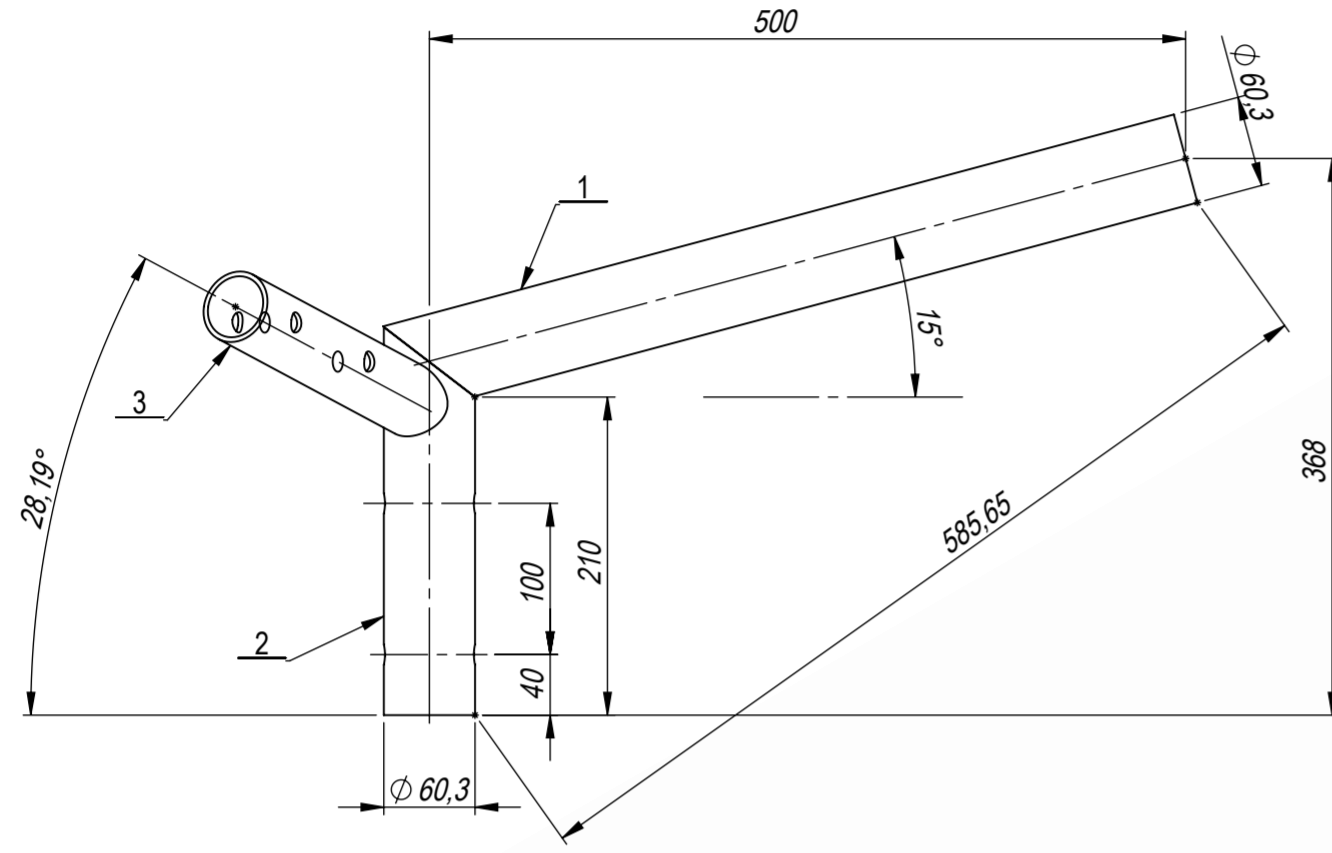



ASM NO.	NAME	QUALTY	MATERIAL	LENGHT	WIDTH	QTY.	WEIGHT	T.WEIGHT
1	POWK1-05-1	1.0037 (S235JR)	PWD60.3X3.2	541.2	0	1	2.31961	2.31961
2	POWK-KBB1A	1.0045 (S355JR)	PWD60.3X3.2	1058	0	1	1.01729	1.01729
3	POWK-SB-1	1.0037 (S235JR)	PWD48.3x3.2	250	0	1	0.84457	0.84457



GENERAL NOTES / GENEL NOTLAR

- All dimensions are in mm.
Tüm ölçüler mm'dir.
- Quality of the material / Malzeme kalitesi :
Shaft and flange / Gövde ve flanş : **S235JR**
Other accessories / Diğer aksesuarlar : **S235JR**
- All steel items, bolts, nuts & washers to be hot-dip galvd.as per (EN ISO 1461)
Tüm çelik elemanlar, civatalar, somunlar ve rondelalar sıcak daldırma galvanizdir. (EN ISO 1461)
- Bolts can be used as (ISO 898) 5.8 & 6.8 & 8.8 according to design criteria.
Tasarım kriterlerine göre civatalar (ISO 898) 5.8 & 6.8 & 8.8 olarak kullanılabilir.

TASARIM NOTLARI DESIGN NOTES	Tasarım Rüzgar Hızı / Design Wind Speed	107 km/h		
	Güvenlik Katsayısı / Factor Of Safety	*		
REVIZYON REVISION	0	*		
	A	*		
PROJE ADI PROJECT	P2-POWR.KG02 PWR2-500-15D-120D KAYNAK GRUBU			
SIP/TEK.NO	*			
 MİTAŞ POLİGON DEMİR ÇELİK A.Ş. <small>Eski Güvercinlik Yolu No.113 Gazi 06560 ANKARA Teh:+90.312.296 20 00 Fax:+90.212.310 46 36 Kızılbey V.D.3220558412 www.mitaspole.com</small>	HAZIRLAYAN DESIGN BY	CIZEN DRAWN BY	KONTROL CHECKED BY	ONAY APPROVED BY
	A.OZTURK	S.AKGOZ	M.KARAARSLAN	K.CANBALOGLU
ÖLÇEK SCALE	TARİH DATE	PAFTA NO DRAWING NO	REV.	*
A2-1:20	27.07.2015	PWR2-500-15D-120D-01		