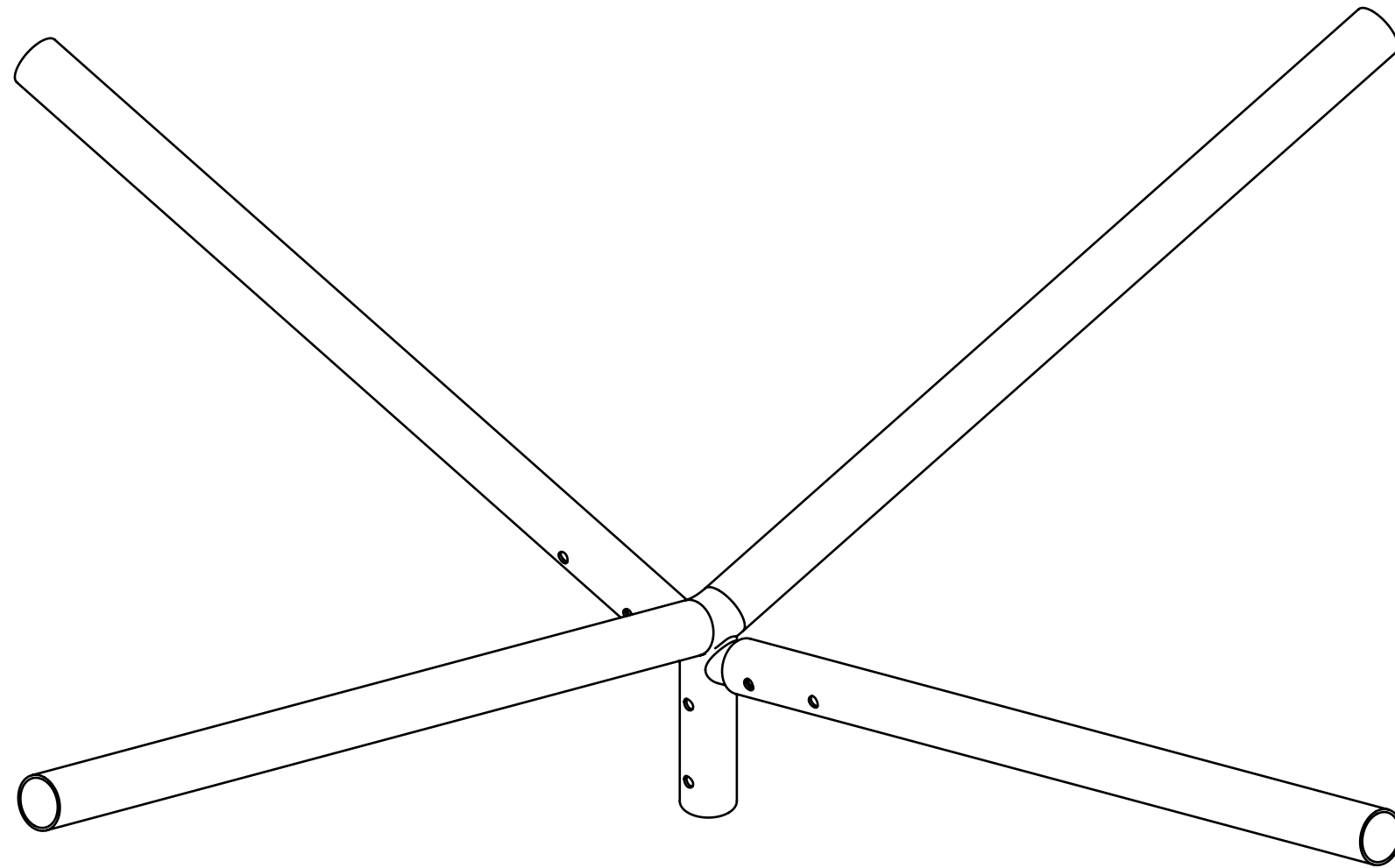
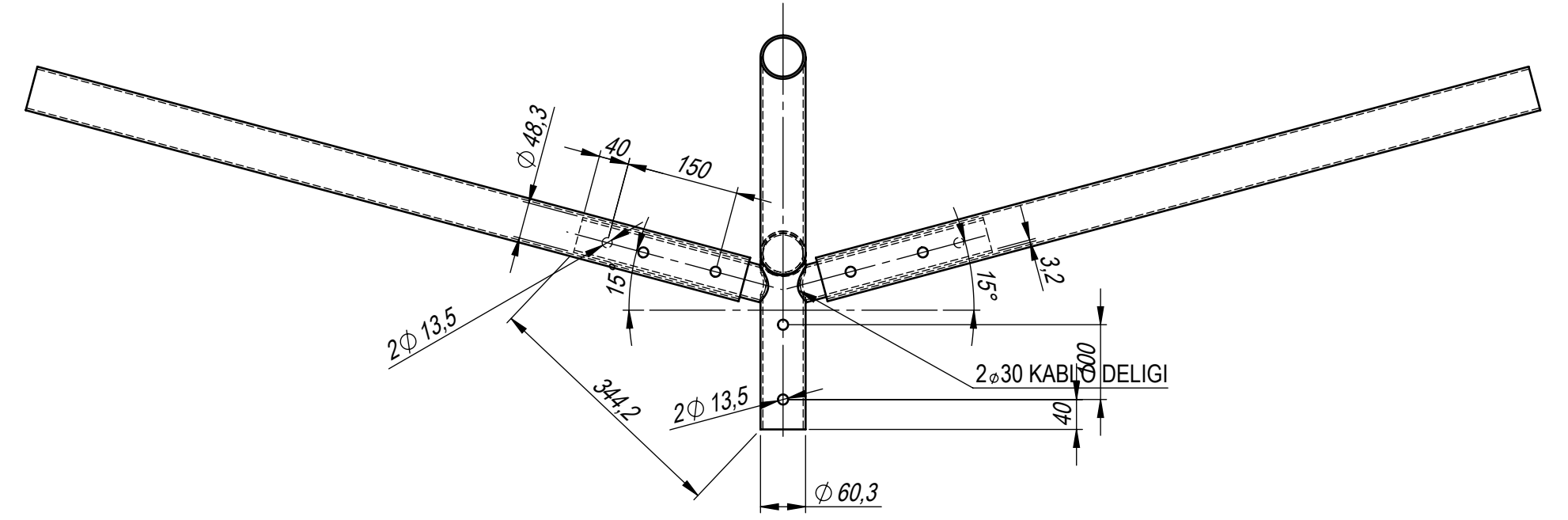
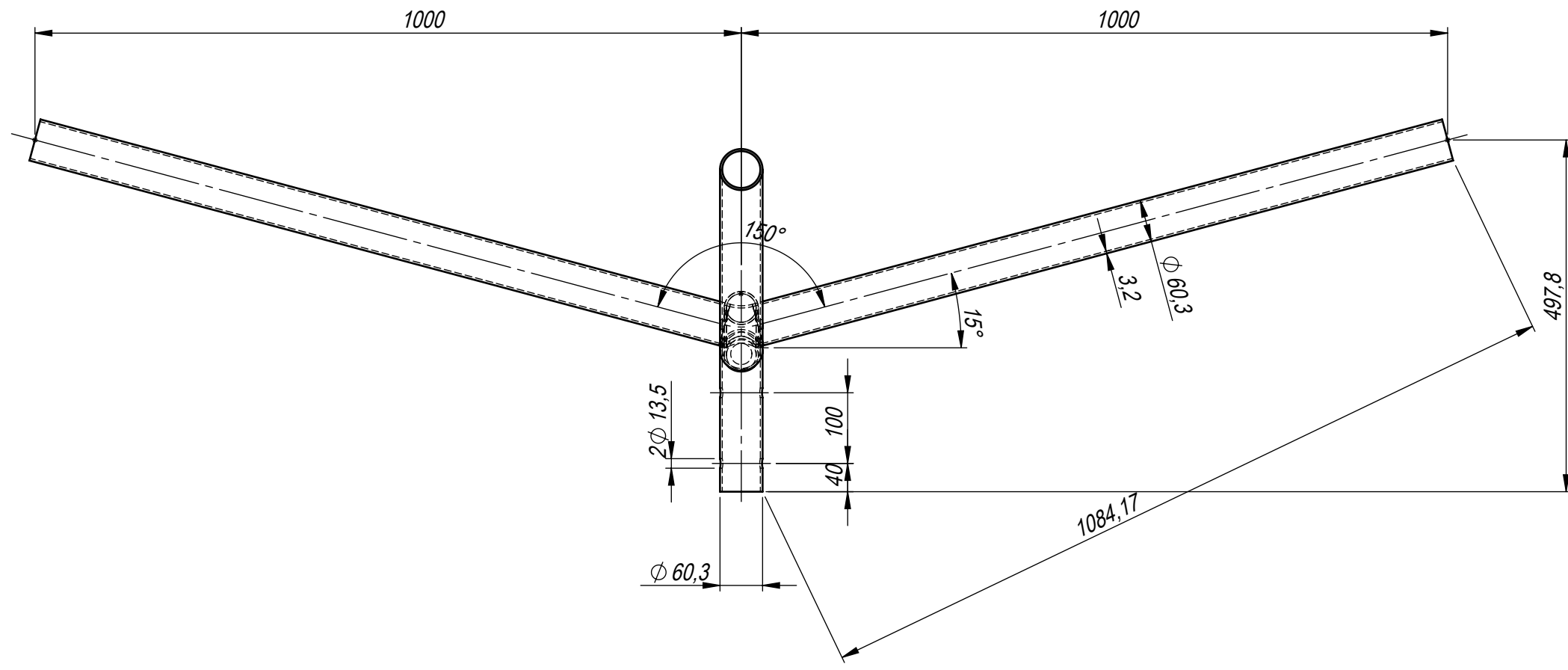


ALL RIGHTS RESERVED. REPRODUCTION OR ISSUE TO THIRD PARTIES IN ANY FORM WHATSOEVER IS NOT PERMITTED WITHOUT WRITTEN AUTHORITY FROM THE PROPRIETORS.

HER HAKKI MAHFUZDUR. YAZILI İZİN OLMADAN DOKÜMANLARIN HIÇ BİR KISMI KOPYA, KAYIT, BASIM VEYA DİĞER HERHANGİ BİR ŞEKİLDE ÇOĞALTILAMAZ VE YA YINLANAMAZ.



GENEL NOTLAR GENERAL NOTES		TARİH DATE		İMZA SIGN		MALZEME MATERIAL		TASARIM NOTLARI DESIGN NOTES	
TUM ÖLÇÜLER mm'DİR. ALL DIMENSIONS ARE IN mm.		4.10.2019				GÖVDE SHAFT		TASARIM RÜZGAR HIZI DESIGN WIND SPEED	
TUM ÇELİK ELEMANLAR, CIVATA, SOMUN VE RONDALALAR SICAK DALDIRMA GALVANİZDİR. (EN ISO 1461) ALL STEEL ITEMS, BOLTS, NUTS & WASHERS TO BE HOT-DIP GALV. AS PER (EN ISO 1461)		4.10.2019				FLANŞ FLANGE		GÜVENLİK KATSAYISI FACTOR OF SAFETY	
TASARIM KRİTERLERİNE GÖRE CIVATALAR (ISO 898) 5.8 & 6.8 & 8.8 OLARAK KULLANILABİLİR. BOLTS CAN BE USED AS (ISO 898) 5.8 & 6.8 & 8.8 ACCORDING TO DESIGN CRITERIA.		4.10.2019				DİĞER OTHER		TASARIM STANDARTI DESIGN STANDART	
ÇİZEN DRAWN BY		KSAVAS							
KONTROL CONTROL		I.YUCEL							
ONAY APPROVAL		K.CANBALOGLU							
<b>TDS4-1000-15D-K-60-00 OUTLINE</b>									
SİPTEK. NO ORDER NUMBER		STANDART							
PAFTA NO DRAWING NUMBER		TDS4-1000-15D-K-60							
TARİH DATE		4.10.2019							
AĞIRLIK WEIGHT									
BÖLÜM DEPARTMENT		POLİGON		SHEET 1 OF 1		ÖLÇEK SCALE		1:20 A2	
						REV		0	

