

THE ASSORTMENT AT A GLANCE

LEDVANCE LED LUMINAIRES




*Success.
Daily
for me!*



YOUR BESTSELLER



Product name	GTIN (EAN)	Replace- ment for ¹	lm	lm/ W		L70 ²	L80 ³	L90 ⁴	Dimensions L x W x H [mm] Ø x H [mm]	Cut out [mm]	No. Graph.
DL SLIM DN155 12W/3000K WT IP20	4058075052284	1 x 18W CFLp	1,020	85	120°	30,000 h	—	—	169 x 30	155	—
DL SLIM DN155 12W/4000K WT IP20	4058075052307	1 x 18W CFLp	1,020	85	120°	30,000 h	—	—	169 x 30	155	—
DL SLIM FRAME DN155 WT	4058075052420	—	—	—	—	—	—	—	170 x 38	—	—
DL SLIM SQ155 12W/3000K WT IP20	4058075052529	1 x 18W CFLp	1,020	85	120°	30,000 h	—	—	169 x 169 x 30	155 x 155	01
DL SLIM SQ155 12W/4000K WT IP20	4058075052543	1 x 18W CFLp	1,020	85	120°	30,000 h	—	—	169 x 169 x 30	155 x 155	01
DL SLIM FRAME SQ155 WT	4058075052666	—	—	—	—	—	—	—	170 x 170 x 38	—	—
Downlight LED 14W/3000K 230V IP20	4058075000001	1 x 26W CFLp	1,310	90	95°	50,000 h	40,000 h	20,000 h	160 x 60	150	—
Downlight LED 14W/4000K 230V IP20	4058075000025	1 x 26W CFLp	1,360	95	95°	50,000 h	40,000 h	20,000 h	160 x 60	150	—
Downlight LED 25W/3000K 230V IP20	4058075000063	2 x 26W CFLp	2,220	90	100°	50,000 h	40,000 h	20,000 h	220 x 67	200	—
Downlight LED 25W/4000K 230V IP20	4058075000087	2 x 26W CFLp	2,340	95	100°	50,000 h	40,000 h	20,000 h	220 x 67	200	—
DL SLIM VALUE DN180 17W/3000K WT	4058075063921	1 x 26W CFLp	1,350	80	120°	50,000 h	—	—	192 x 23	180	02
DL SLIM VALUE DN180 17W/4000K WT	4058075063945	1 x 26W CFLp	1,400	80	120°	50,000 h	—	—	192 x 23	180	02
DL SLIM VALUE DN205 22W/3000K WT	4058075064003	2 x 26W CFLp	1,850	85	120°	50,000 h	—	—	225 x 23	205	02
DL SLIM VALUE DN205 22W/4000K WT	4058075064027	2 x 26W CFLp	1,920	90	120°	50,000 h	—	—	225 x 23	205	02
Spot LED adjust 8W/3000K 230V IP20	4058075000162	75 W HAL	660	85	36°	50,000 h	40,000 h	20,000 h	90 x 47	83	—
Spot LED adjust 8W/4000K 230V IP20	4058075000186	75 W HAL	720	90	36°	50,000 h	40,000 h	20,000 h	90 x 47	83	—
Linear LED 300 4W/3000K 230V IP20	4058075000247	1 x 9W FL	400	100	140°	50,000 h	40,000 h	30,000 h	313 x 28 x 36	—	03
Linear LED 300 4W/4000K 230V IP20	4058075000261	1 x 9W FL	450	110	140°	50,000 h	40,000 h	30,000 h	313 x 28 x 36	—	03
Linear LED 600 8W/3000K 230V IP20	4058075000285	1 x 18W FL	800	100	140°	50,000 h	40,000 h	30,000 h	573 x 28 x 36	—	03
Linear LED 600 8W/4000K 230V IP20	4058075000308	1 x 18W FL	800	100	140°	50,000 h	40,000 h	30,000 h	573 x 28 x 36	—	03
Linear LED 900 12W/3000K 230V IP20	4058075006497	1 x 30W FL	1,200	100	140°	50,000 h	40,000 h	30,000 h	873 x 28 x 36	—	03
Linear LED 900 12W/4000K 230V IP20	4058075056510	1 x 30W FL	1,200	100	140°	50,000 h	40,000 h	30,000 h	873 x 28 x 36	—	03
Linear LED 1200 14W/3000K 230V IP20	4058075000322	1 x 36W FL	1,400	100	140°	50,000 h	40,000 h	30,000 h	1,173 x 28 x 36	—	03
Linear LED 1200 14W/4000K 230V IP20	4058075000346	1 x 36W FL	1,500	100	140°	50,000 h	40,000 h	30,000 h	1,173 x 28 x 36	—	03
Surface-C LED 350 18W/3000K IP44	4058075000742	1 x 26W CFLp	1,440	80	120°	50,000 h	30,000 h	15,000 h	350 x 115	—	04
Surface-C LED 350 18W/4000K IP44	4058075000766	1 x 26W CFLp	1,440	80	120°	50,000 h	30,000 h	15,000 h	350 x 115	—	04
Surface-C LED 400 24W/3000K IP44	4058075000780	1 x 32W CFLp	1,920	80	120°	50,000 h	30,000 h	15,000 h	400 x 120	—	04
Surface-C LED 400 24W/4000K IP44	4058075000803	1 x 32W CFLp	1,920	80	120°	50,000 h	30,000 h	15,000 h	400 x 120	—	04
Surface-C LED 400 24W/4000K Sensor IP44	4058075000841	1 x 32W CFLp	1,920	80	120°	50,000 h	30,000 h	15,000 h	400 x 120	—	04
Panel LED Value 600 40W/3000K	4058075066588	4 x 18W/4 x 14W FL	3,300	85	120°	30,000 h	—	—	595 x 595 x 10.5	575 x 575	05
Panel LED Value 600 40W/4000K	4058075066601	4 x 18W/4 x 14W FL	3,600	90	120°	30,000 h	—	—	595 x 595 x 10.5	575 x 575	05
Panel 600 Surface Mount Kit Value	4058075075795	—	—	—	—	—	—	—	600.5 x 600.5 x 45	—	—
Panel Mounting Clips 1x4	4058075044630	—	—	—	—	—	—	—	35 x 30 x 45	—	—
Panel 600/625 Suspension Kit	4058075800106	—	—	—	—	—	—	—	3,000	—	—
DP SLIM VALUE 1200 36W/4000K IP65	4058075066458	2 x 36W FL	4,000	110	120°	30,000 h	—	—	1,200 x 35 x 48	—	06
DP SLIM VALUE 1200 36W/6500K IP65	4058075066472	2 x 36W FL	4,000	110	120°	30,000 h	—	—	1,200 x 35 x 48	—	06
DP SLIM VALUE 1500 50W/4000K IP65	4058075066496	2 x 58W FL	5,500	110	120°	30,000 h	—	—	1,500 x 35 x 48	—	06
DP SLIM VALUE 1500 50W/6500K IP65	4058075066519	2 x 58W FL	5,500	110	120°	30,000 h	—	—	1,500 x 35 x 48	—	06
High Bay LED 120W/4000K 100-240V IP65	4058075001039	250 W HID	13,000	110	90°	50,000 h	35,000 h	20,000 h	295 x 141	—	07
High Bay LED 200W/4000K 100-240V IP65	4058075001053	400 W HID	22,000	110	70°	50,000 h	35,000 h	20,000 h	380 x 159	—	—
Floodlight LED 10W/3000K White IP65	4058075810938	80 W HAL	800	80	100°	50,000 h	30,000 h	15,000 h	117 x 127 x 39	—	—
Floodlight LED 10W/4000K White IP65	4058075810952	80 W HAL	800	80	100°	50,000 h	30,000 h	15,000 h	117 x 127 x 39	—	—
Floodlight LED 20W/3000K White IP65	4058075001084	120 W HAL	2,000	100	100°	50,000 h	30,000 h	15,000 h	155 x 167 x 44	—	—
Floodlight LED 20W/3000K Black IP65	4058075001060	120 W HAL	2,000	100	100°	50,000 h	30,000 h	15,000 h	155 x 167 x 44	—	08
Floodlight LED 20W/4000K Black IP65	4058075810976	120 W HAL	2,000	100	100°	50,000 h	30,000 h	15,000 h	155 x 167 x 44	—	08
Floodlight LED 50W/3000K White IP65	4058075001145	400 W HAL	5,000	100	100°	50,000 h	30,000 h	15,000 h	187 x 216 x 62	—	—
Floodlight LED 50W/3000K Black IP65	4058075001107	400 W HAL	5,000	100	100°	50,000 h	30,000 h	15,000 h	187 x 216 x 62	—	—
Floodlight LED 50W/4000K Black IP65	4058075810990	400 W HAL	5,000	100	100°	50,000 h	30,000 h	15,000 h	187 x 216 x 62	—	—
Floodlight LED 100W/4000K Black IP65	4058075001138	750 W HAL	10,000	100	100°	50,000 h	40,000 h	20,000 h	243 x 253 x 93	—	—
Floodlight LED 100W/6500K Black IP65	4058075811010	750 W HAL	10,000	100	100°	50,000 h	40,000 h	20,000 h	243 x 253 x 93	—	—

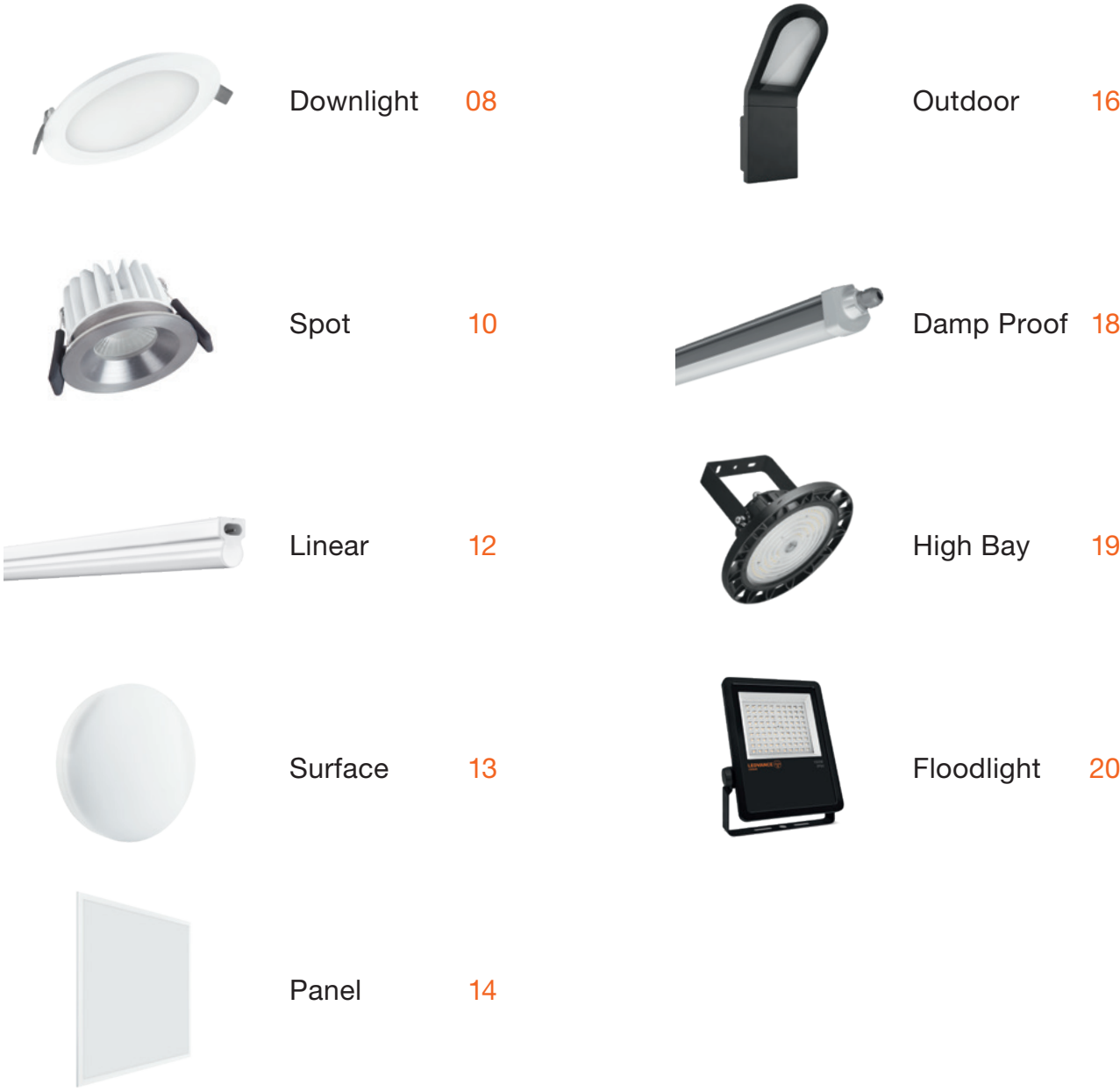
¹ Replacement for usually used traditional equivalent | ² t[h]: L70 @ 25 °C (T_a) | ³ t[h]: L80 @ 25 °C (T_a) | ⁴ t[h]: L90 @ 25 °C (T_a)

CONTENT

INTRODUCTION	04
--------------	----

WHAT’S NEW	06
------------	----

THE FULL ASSORTMENT



LIGHTING CONTROLS	21
-------------------	----

APPLICATION SUPPORT	22
---------------------	----

LEDVANCE SUCCESS STORIES	23
--------------------------	----

LEDVANCE: ADVANCING LIGHT

“ADVANCING LIGHT” IS MORE THAN A PROMISE – IT'S AN ATTITUDE.



As a trusted partner for general lighting products from OSRAM and with our own LEDVANCE luminaire portfolio, we embrace this attitude in everything we do.

LEDVANCE is an offspring of OSRAM, combining traditional general illumination with modern, ground-breaking lighting technologies, and is built on trusted, long-standing customer relationships and a powerful distribution network. Based on our in-depth understanding of the general illumination market, trending technologies and changing needs, we support the specific and individual demands of both direct and indirect customers worldwide and with teams of experts near you.

Visit us at ledvance.com

LEDVANCE LED LUMINAIRES THAT'S HOW TO REDEFINE STANDARD

Your customers come to you with the highest demands these days – in terms of both quality and price-performance ratio – even for standard applications.

With the extended LEDVANCE LED luminaire range we give you the tools to meet those demands and delight your customers.

We are continually adding new LED luminaires and product families to our portfolio of bestsellers. Again, perfectly matched to the requirements of you and your customers to bring you success each and every day.

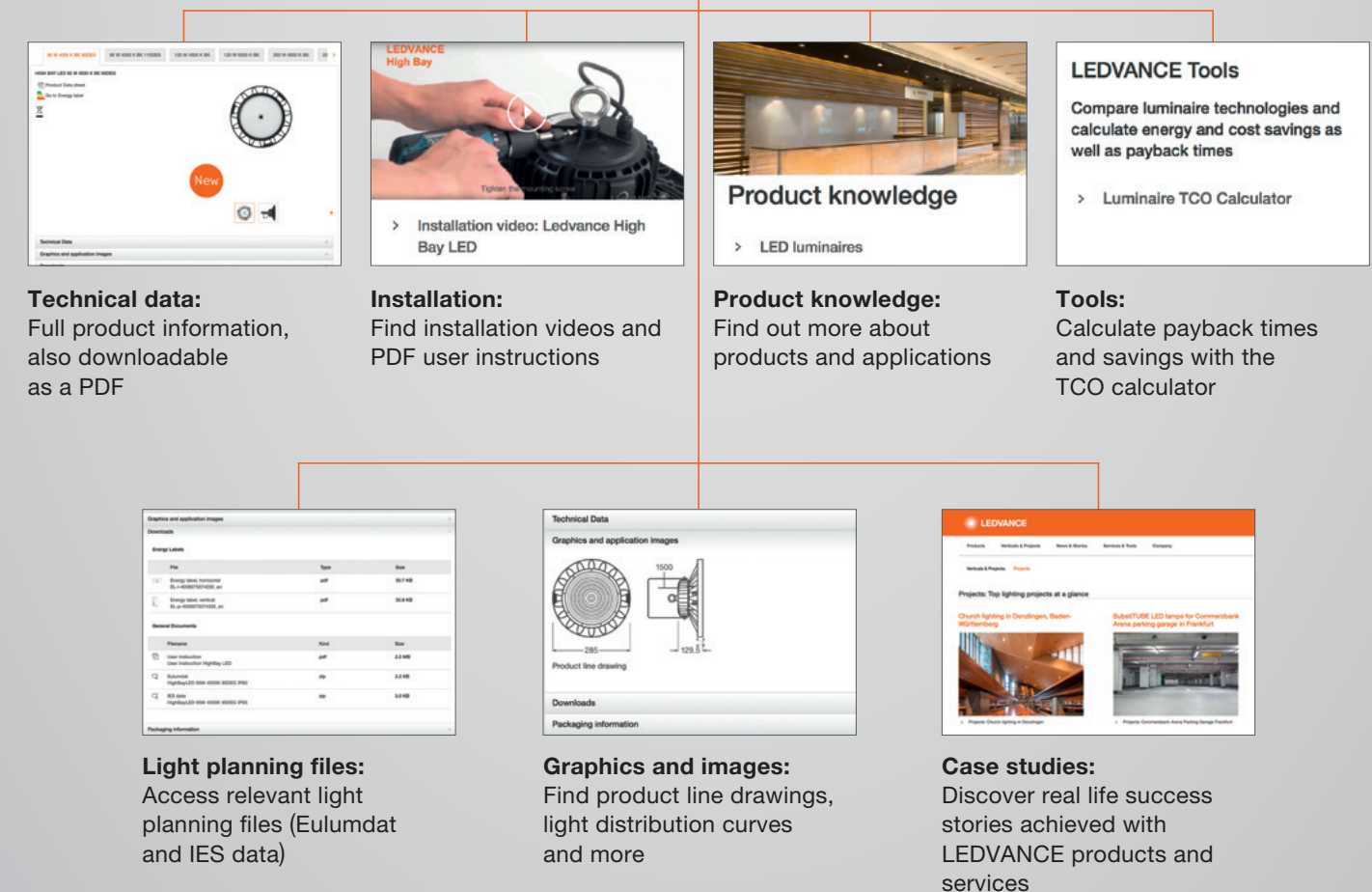
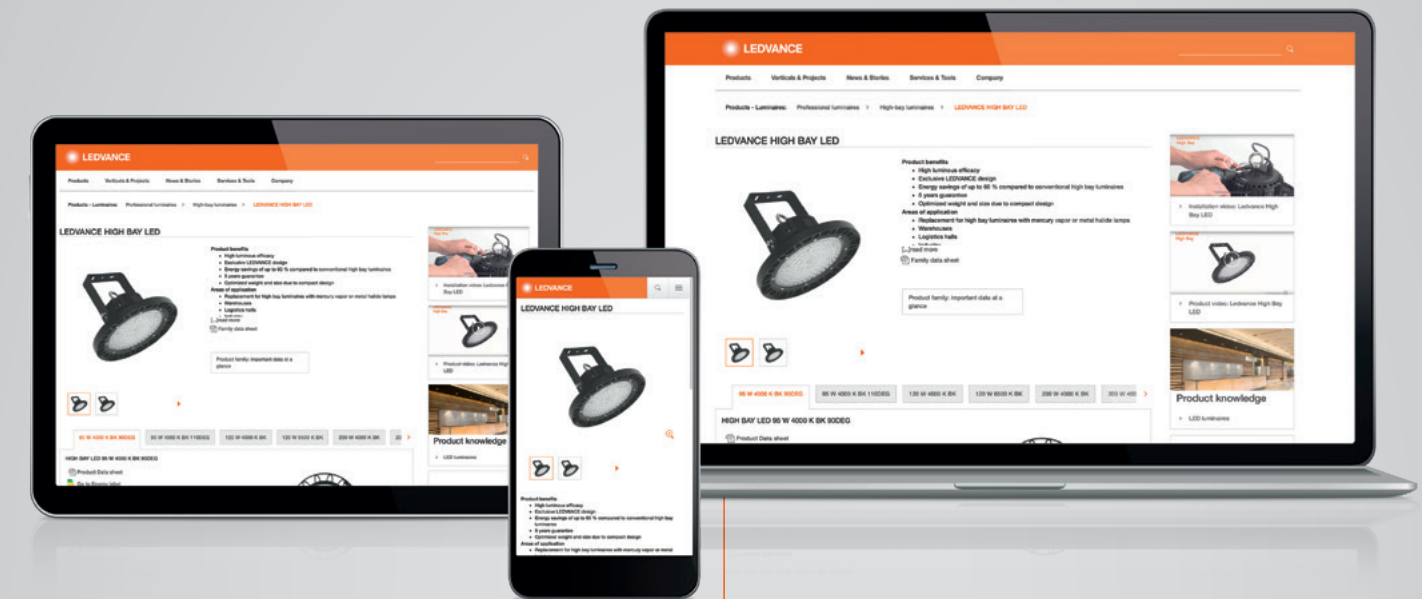
The LED luminaires are equipped exclusively with high-quality LED modules in the highest energy efficiency classes (A, A+ and A++).¹



¹ Energy efficiency class (EEC) on a scale of A++ (highest efficiency) to E (lowest efficiency). The luminaires contain built-in LED lamps. The LED lamps cannot be changed in the luminaire.
² Refer to www.ledvance.com/guarantee for precise conditions

LEDVANCE ON THE WEB DISCOVER ALL THE INFORMATION ON LEDVANCE LUMINAIRES ONLINE

If you need important information on any LEDVANCE luminaire, check out our eCatalog online where you can find technical data sheets, installation videos, product knowledge as well as planning and calculation tools for your daily success. Visit us at ledvance.com



NEW PRODUCTS FOR YOUR DAILY SUCCESS

LEDVANCE'S NEW ADDITIONS FEATURE VERSATILE PRODUCTS FOR A WIDE VARIETY OF APPLICATIONS

NEW HIGHLIGHTS



PAGE 8

DOWNLIGHT SLIM

- Very slim housing with 25 mm built-in height
- With integrated driver, fast-connector-box with push-button-terminal and strain relief for easy and safe installation
- Surface mounting frames available



PAGE 13

SURFACE COMPACT IK10

- Robust construction (IK10) helps to resist against vandalism
- Slim profile
- LED protected for safe installation
- Glow Wire Test according to IEC 695-2-1: 850 °C



PAGE 16

OUTDOOR LUMINAIRES

- Attractive design, enhanced by high quality materials and finish
- Energy savings up to 81 %¹
- Robust and weather-proof (up to IP54)
- Simple installation, all necessary accessories included



PAGE 18

DAMP PROOF COMPACT

- Easy installation as mounting brackets can be positioned freely on the luminaire
- Easy access to electrical terminal thanks end caps with twist & lock mechanism, tool-free connection due to push button connector
- Efficacy of up to 120 lm/W
- Through-wiring cable already installed



NEW VALUE PRODUCTS



PAGE 14

PANEL VALUE 600

- Value version for low-budget applications with good quality and an efficacy of up to 90 lm/W
- UGR < 19 versions available²



PAGE 14

PANEL SURFACE MOUNT KIT VALUE

- Set for easy self-assembly
- Suitable for Panel and Panel Value products



PAGE 8

DOWNLIGHT SLIM VALUE

- Very slim aluminum housing with only 23 mm built-in height to serve low installation depths
- External driver (height: 27 mm) with twist & lock connection



PAGE 18

DAMP PROOF SLIM VALUE

- Very slim design with a uniform light distribution and wide beam angle
- Easy access to tool-free electrical terminal thanks end caps with clip mechanism

MORE NEW PRODUCTS



PAGE 12

LINEAR LUMINAIRES

- Linear with or without switch now also as 900 version available



PAGE 19

HIGH BAY

- Now with energy savings up to 60 %¹ (135 lm/W) and additional beam angles

¹ Energy savings up to XX%. Compared to luminaire with traditional technologies. The possible power loss of traditional control gear solutions is part of the calculation of the anticipated energy savings
² In accordance with the Norm UNI-EN 12464-1

LEDVANCE
OSRAM



LEDVANCE

DOWNLIGHT

- Direct replacement for various compact fluorescent lamp downlights
- Energy savings up to 60 %¹
- Easy installation and connection
- Slim versions available for low installation depths
- Suitable e.g. for general illumination, corridors, stairways, foyers



SAVE UP TO 60%¹ ENERGY

Product name	GTIN (EAN)	Replace-ment for ³	Im	Im/W		L70 ⁴	L80 ⁵	L90 ⁶	Dimensions L x W x H [mm] Ø x H [mm]	Cut out [mm]	 ⁷	No. Graphic
Downlight Slim Round & accessories (surface mounting frame)												
NEW DL SLIM DN105 6W/3000K WT IP20	4058075052222	1 x 10 W CFLp	420	70	120°	30,000 h	—	—	118 x 30	105		01
NEW DL SLIM DN105 6W/4000K WT IP20	4058075052246	1 x 10 W CFLp	430	70	120°	30,000 h	—	—	118 x 30	105		01
NEW DL SLIM DN105 6W/6500K WT IP20	4058075052260	1 x 10 W CFLp	430	70	120°	30,000 h	—	—	118 x 30	105		01
NEW DL SLIM DN155 12W/3000K WT IP20	4058075052284	1 x 18 W CFLp	1,020	85	120°	30,000 h	—	—	169 x 30	155		01
NEW DL SLIM DN155 12W/4000K WT IP20	4058075052307	1 x 18 W CFLp	1,020	85	120°	30,000 h	—	—	169 x 30	155		01
NEW DL SLIM DN155 12W/6500K WT IP20	4058075052321	1 x 18 W CFLp	1,020	85	120°	30,000 h	—	—	169 x 30	155		01
NEW DL SLIM DN210 18W/3000K WT IP20	4058075052345	1 x 26 W CFLp	1,530	85	120°	30,000 h	—	—	225 x 30	210		01
NEW DL SLIM DN210 18W/4000K WT IP20	4058075052369	1 x 26 W CFLp	1,530	85	120°	30,000 h	—	—	225 x 30	210		01
NEW DL SLIM DN210 18W/6500K WT IP20	4058075052383	1 x 26 W CFLp	1,530	85	120°	30,000 h	—	—	225 x 30	210		01
NEW DL SLIM FRAME DN105 WT	4058075052406	—	—	—	—	—	—	—	121 x 54	—		05
NEW DL SLIM FRAME DN155 WT	4058075052420	—	—	—	—	—	—	—	170 x 38	—		05
NEW DL SLIM FRAME DN210 WT	4058075052444	—	—	—	—	—	—	—	225 x 38	—		05
Downlight Slim Square & accessories (surface mounting frame)												
NEW DL SLIM SQ105 6W/3000K WT IP20	4058075052468	1 x 10 W CFLp	420	70	120°	30,000 h	—	—	118 x 118 x 30	105 x 105		02
NEW DL SLIM SQ105 6W/4000K WT IP20	4058075052482	1 x 10 W CFLp	430	70	120°	30,000 h	—	—	118 x 118 x 30	105 x 105		02
NEW DL SLIM SQ105 6W/6500K WT IP20	4058075052505	1 x 10 W CFLp	430	70	120°	30,000 h	—	—	118 x 118 x 30	105 x 105		02
NEW DL SLIM SQ155 12W/3000K WT IP20	4058075052529	1 x 18 W CFLp	1,020	85	120°	30,000 h	—	—	169 x 169 x 30	155 x 155		02
NEW DL SLIM SQ155 12W/4000K WT IP20	4058075052543	1 x 18 W CFLp	1,020	85	120°	30,000 h	—	—	169 x 169 x 30	155 x 155		02
NEW DL SLIM SQ155 12W/6500K WT IP20	4058075052567	1 x 18 W CFLp	1,020	85	120°	30,000 h	—	—	169 x 169 x 30	155 x 155		02
NEW DL SLIM SQ210 18W/3000K WT IP20	4058075052581	1 x 26 W CFLp	1,530	85	120°	30,000 h	—	—	225 x 225 x 30	210 x 210		02
NEW DL SLIM SQ210 18W/4000K WT IP20	4058075052604	1 x 26 W CFLp	1,530	85	120°	30,000 h	—	—	225 x 225 x 30	210 x 210		02
NEW DL SLIM SQ210 18W/6500K WT IP20	4058075052628	1 x 26 W CFLp	1,530	85	120°	30,000 h	—	—	225 x 225 x 30	210 x 210		02
NEW DL SLIM FRAME SQ105 WT	4058075052642	—	—	—	—	—	—	—	121 x 121 x 54	—		06
NEW DL SLIM FRAME SQ155 WT	4058075052666	—	—	—	—	—	—	—	170 x 170 x 38	—		06
NEW DL SLIM FRAME SQ210 WT	4058075052680	—	—	—	—	—	—	—	225 x 225 x 38	—		06
Downlight												
Downlight LED 14W/3000K 230V IP20	4058075000001	1 x 26 W CFLp	1,310	90	95°	50,000 h	40,000 h	20,000 h	160 x 60	150		03
Downlight LED 14W/4000K 230V IP20	4058075000025	1 x 26 W CFLp	1,360	95	95°	50,000 h	40,000 h	20,000 h	160 x 60	150		03
Downlight LED 14W/6500K 230V IP20	4058075000049	1 x 26 W CFLp	1,360	95	95°	50,000 h	40,000 h	20,000 h	160 x 60	150		03
Downlight LED 25W/3000K 230V IP20	4058075000063	2 x 26 W CFLp	2,220	90	100°	50,000 h	40,000 h	20,000 h	220 x 67	200		03
Downlight LED 25W/4000K 230V IP20	4058075000087	2 x 26 W CFLp	2,340	95	100°	50,000 h	40,000 h	20,000 h	220 x 67	200		03
Downlight LED 25W/6500K 230V IP20	4058075000100	2 x 26 W CFLp	2,440	100	100°	50,000 h	40,000 h	20,000 h	220 x 67	200		03
Downlight LED 35W/3000K 230V IP20	4058075016323	2 x 32 W CFLp	3,150	90	100°	50,000 h	40,000 h	20,000 h	220 x 67	200		03
Downlight LED 35W/4000K 230V IP20	4058075016347	2 x 32 W CFLp	3,325	95	100°	50,000 h	40,000 h	20,000 h	220 x 67	200		03
Downlight LED 35W/6500K 230V IP20	4058075016361	2 x 32 W CFLp	3,500	100	100°	50,000 h	40,000 h	20,000 h	220 x 67	200		03
Downlight DALI												
DL LED DALI 25W/3000K 230V IP20	4058075042032	2 x 26 W CFLp	2,220	90	100°	50,000 h	40,000 h	20,000 h	220 x 67	200	✓	03
DL LED DALI 25W/4000K 230V IP20	4058075042056	2 x 26 W CFLp	2,340	95	100°	50,000 h	40,000 h	20,000 h	220 x 67	200	✓	03
DL LED DALI 25W/6500K 230V IP20	4058075042070	2 x 26 W CFLp	2,440	100	100°	50,000 h	40,000 h	20,000 h	220 x 67	200	✓	03
DL LED DALI 35W/3000K 230V IP20	4058075042094	2 x 32 W CFLp	3,150	90	100°	50,000 h	40,000 h	20,000 h	220 x 67	200	✓	03
DL LED DALI 35W/4000K 230V IP20	4058075042117	2 x 32 W CFLp	3,325	95	100°	50,000 h	40,000 h	20,000 h	220 x 67	200	✓	03
DL LED DALI 35W/6500K 230V IP20	4058075042131	2 x 32 W CFLp	3,500	100	100°	50,000 h	40,000 h	20,000 h	220 x 67	200	✓	03
Downlight Slim Value (available by end-January 2018)												
NEW DL SLIM VALUE DN180 17W/3000K WT	4058075063921	1 x 26 W CFLp	1,350	80	120°	50,000 h	—	—	192 x 23	180		04
NEW DL SLIM VALUE DN180 17W/4000K WT	4058075063945	1 x 26 W CFLp	1,400	80	120°	50,000 h	—	—	192 x 23	180		04
NEW DL SLIM VALUE DN205 22W/3000K WT	4058075064003	2 x 26 W CFLp	1,850	85	120°	50,000 h	—	—	225 x 23	205		04
NEW DL SLIM VALUE DN205 22W/4000K WT	4058075064027	2 x 26 W CFLp	1,920	90	120°	50,000 h	—	—	225 x 23	205		04

¹ Energy savings up to 60 %. Compared to luminaire with traditional technologies. The possible power loss of traditional control gear solutions is part of the calculation of the anticipated energy savings
² Refer to www.ledvance.com/guarantee for precise conditions | ³ Replacement for usually used traditional equivalent | ⁴t[h]: L70 @ 25 °C (T_a) | ⁵t[h]: L80 @ 25 °C (T_a) | ⁶t[h]: L90 @ 25 °C (T_a) | ⁷ Dimmable with DALI Interface, for lighting controls see page 21



SPOT

- Direct replacement for halogen spots (35 W, 50 W, 75 W)
- Energy savings up to 90 %¹
- Easy and quick installation with advanced flexibility due to external driver (included)
- Versions for special applications available (e.g. fire-rated or recessed light source)
- Suitable e.g. for hotel rooms, bathrooms, bars, restaurants

IP20

IP44

IP65

LEDVANCE

3 year guarantee

For selected products see table

01

02

03

04

05

06

07

08

incl. OSRAM GU10 lamp

SAVE UP TO 90%¹ ENERGY

Product name	GTIN (EAN)	Replace- ment for ³	Im	lm/W		L70 ⁴	L80 ⁵	L90 ⁶	Dimensions Ø × H [mm]	Cut out [mm]		No. Graphic
Spot adjust (adjustable ± 20°)												
Spot LED adjust 4.5W/3000K 230V IP20	4058075000124	35 W HAL	360	80	36°	50,000 h	40,000 h	20,000 h	80 × 36	68		01
Spot LED adjust 6.5W/3000K 230V IP20	4058075000148	50 W HAL	550	85	36°	50,000 h	40,000 h	20,000 h	80 × 36	68		01
Spot LED adjust 8W/3000K 230V IP20	4058075000162	75 W HAL	660	85	36°	50,000 h	40,000 h	20,000 h	90 × 47	83		01
Spot LED adjust 8W/4000K 230V IP20	4058075000186	75 W HAL	720	90	36°	50,000 h	40,000 h	20,000 h	90 × 47	83		01
Spot DALI adjust (adjustable ± 20°)												
Spot LED DALI adjust 8W/3000K IP20	4058075042155	75 W HAL	660	85	36°	50,000 h	40,000 h	20,000 h	90 × 47	83	✓	01
Spot LED DALI adjust 8W/4000K IP20	4058075042179	75 W HAL	720	90	36°	50,000 h	40,000 h	20,000 h	90 × 47	83	✓	01
Spot fix DIM IP44												
Spot LED fix 8W/3000K WT DIM IP44	4058075811256	75 W HAL	620	75	36°	50,000 h	40,000 h	20,000 h	81 × 51	68	✓	02
Spot LED fix 8W/4000K WT DIM IP44	4058075811270	75 W HAL	670	80	36°	50,000 h	40,000 h	20,000 h	81 × 51	68	✓	02
Spot LED fix 8W/3000K SI DIM IP44	4058075811294	75 W HAL	620	75	36°	50,000 h	40,000 h	20,000 h	81 × 51	68	✓	03
Spot LED fix 8W/4000K SI DIM IP44	4058075811317	75 W HAL	670	80	36°	50,000 h	40,000 h	20,000 h	81 × 51	68	✓	03
Spot FP IP65 (fire-resistant up to 90 minutes)⁸												
Spot-FP LED fix 7W/3000K 230V IP65	4058075000209	50 W HAL	530	75	38°	50,000 h	40,000 h	20,000 h	90 × 72	68		04
Spot-FP LED fix 8W/3000K WT DIM IP65	4058075811171	75 W HAL	620	75	36°	50,000 h	40,000 h	20,000 h	81 × 51	68	✓	05
Spot-FP LED fix 8W/4000K WT DIM IP65	4058075811195	75 W HAL	670	80	36°	50,000 h	40,000 h	20,000 h	81 × 51	68	✓	05
Spot-FP LED fix 8W/3000K SI DIM IP65	4058075811218	75 W HAL	620	75	36°	50,000 h	40,000 h	20,000 h	81 × 51	68	✓	06
Spot-FP LED fix 8W/4000K SI DIM IP65	4058075811232	75 W HAL	670	80	36°	50,000 h	40,000 h	20,000 h	81 × 51	68	✓	06
Spot Dark Light IP44 (70° cut-off angle – deep recessed light source for good glare control)												
Spot-DK LED fix 7W/3000K 230V IP44	4058075000223	50 W HAL	580	85	36°	50,000 h	40,000 h	20,000 h	70 × 58	63		07
Spot Kit LED (incl. OSRAM GU10 lamp)												
Spot Kit LED PAR16 4.7W 3000K non DIM	4058075800984	50 W HAL	380	80	36°	15,000 h	—	—	85 × 100	75		08
Spot Kit LED PAR16 4.7W 4000K non DIM	4058075801004	50 W HAL	420	75	36°	15,000 h	—	—	85 × 100	75		08
Spot Kit LED PAR16 5.5W 3000K DIM	4058075800908	50 W HAL	380	80	36°	25,000 h	—	—	85 × 100	75	✓	08
Spot Kit LED PAR16 5.5W 4000K DIM	4058075800946	50 W HAL	420	75	36°	25,000 h	—	—	85 × 100	75	✓	08

¹ Energy savings up to 90 %. Compared to luminaire with traditional technologies. The possible power loss of traditional control gear solutions is part of the calculation of the anticipated energy savings
² Refer to www.ledvance.com/guarantee for precise conditions | ³ Replacement for usually used traditional equivalent | ⁴t[h]: L70 @ 25 °C (T_a) | ⁵t[h]: L80 @ 25 °C (T_a) | ⁶t[h]: L90 @ 25 °C (T_a) | ⁷ Phase-Cut if DALI is not indicated, for DALI: dimmable with DALI Interface, for lighting controls see page 21, for list of dimmer, please refer to ledvance.com | ⁸ Up to 90 minutes, tested in accordance with EN 1365-2:2014 "fire resistance tests for loadbearing elements – Part 2: Floors and roofs", BS476-20:1987 and BS476-21:1987




LINEAR

- Little space required thanks to compact dimensions
- Seamless connection of up to 10 luminaires in a row
- Versions with switch available
- All accessories for installation included
- Can be mounted in direct or in perpendicular position
- Suitable e.g. for corridors, cove lighting, under-cabinet lighting



SAVE UP TO 61%¹ ENERGY

Product name	GTIN (EAN)	Replace- ment for ³	lm	lm/ /W		L70 ⁴	L80 ⁵	L90 ⁶	Dimensions L × W × H [mm]	No. Graphic
Linear (with switch cable length incl. Europlug: 1.3 m)										
Linear LED 300 4W/3000K 230V IP20	4058075000247	1 × 9W FL	400	100	140°	50,000 h	40,000 h	30,000 h	313 × 28 × 36	01
Linear LED 300 4W/4000K 230V IP20	4058075000261	1 × 9W FL	450	110	140°	50,000 h	40,000 h	30,000 h	313 × 28 × 36	01
Linear LED 600 8W/3000K 230V IP20	4058075000285	1 × 18 W FL	800	100	140°	50,000 h	40,000 h	30,000 h	573 × 28 × 36	01
Linear LED 600 8W/4000K 230V IP20	4058075000308	1 × 18 W FL	800	100	140°	50,000 h	40,000 h	30,000 h	573 × 28 × 36	01
NEW Linear LED 900 12W/3000K 230V IP20	4058075056497	1 × 30 W FL	1,200	100	140°	50,000 h	40,000 h	30,000 h	873 × 28 × 36	01
NEW Linear LED 900 12W/4000K 230V IP20	4058075056510	1 × 30 W FL	1,200	100	140°	50,000 h	40,000 h	30,000 h	873 × 28 × 36	01
Linear LED 1200 14W/3000K 230V IP20	4058075000322	1 × 36 W FL	1,400	100	140°	50,000 h	40,000 h	30,000 h	1,173 × 28 × 36	01
Linear LED 1200 14W/4000K 230V IP20	4058075000346	1 × 36 W FL	1,500	100	140°	50,000 h	40,000 h	30,000 h	1,173 × 28 × 36	01
Linear Power (without switch cable length incl. Europlug: 1.3 m)										
Linear LED 600 Power 10W/3000K IP20	4058075000360	1 × 18 W FL	1,000	100	140°	50,000 h	40,000 h	30,000 h	573 × 24 × 36	02
Linear LED 600 Power 10W/4000K IP20	4058075000384	1 × 18 W FL	1,000	100	140°	50,000 h	40,000 h	30,000 h	573 × 24 × 36	02
NEW Linear LED 900 Power 15W/3000K IP20	4058075056534	1 × 30 W FL	1,500	100	140°	50,000 h	40,000 h	30,000 h	873 × 24 × 36	02
NEW Linear LED 900 Power 15W/4000K IP20	4058075056558	1 × 30 W FL	1,500	100	140°	50,000 h	40,000 h	30,000 h	873 × 24 × 36	02
Linear LED 1200 Power 20W/3000K IP20	4058075000407	1 × 36 W FL	2,000	100	140°	50,000 h	40,000 h	30,000 h	1,173 × 24 × 36	02
Linear LED 1200 Power 20W/4000K IP20	4058075000421	1 × 36 W FL	2,000	100	140°	50,000 h	40,000 h	30,000 h	1,173 × 24 × 36	02
Linear LED 1500 Power 25W/3000K IP20	4058075000445	1 × 58 W FL	2,500	100	140°	50,000 h	40,000 h	30,000 h	1,473 × 24 × 36	02
Linear LED 1500 Power 25W/4000K IP20	4058075000469	1 × 58 W FL	2,500	100	140°	50,000 h	40,000 h	30,000 h	1,473 × 24 × 36	02

¹ Energy savings up to 61 %. Compared to luminaire with traditional technologies. The possible power loss of traditional control gear solutions is part of the calculation of the anticipated energy savings
² Refer to [www.ledvance.com/guarantee](#) for precise conditions | ³ Replacement for usually used traditional equivalent | ⁴t[h]: L70 @ 25 °C (T_a) | ⁵t[h]: L80 @ 25 °C (T_a) | ⁶t[h]: L90 @ 25 °C (T_a) | ⁷ Daylight and motion sensor





SURFACE

- Replacement for traditional fluorescent surface luminaires (1 × 26 W, 1 × 32 W)
- LED protected for safe installation
- Very homogenous light distribution
- Versions with sensor or IK10 available
- Suitable e.g. for corridors, stairways, bathrooms, foyers



SAVE UP TO 55%¹ ENERGY

Product name	GTIN (EAN)	Replace- ment for ³	lm	lm/ /W		L70 ⁴	L80 ⁵	L90 ⁶	Dimensions Ø × H [mm]	 ⁷	No. Graphic
Surface Circular											
Surface-C LED 350 18W/3000K IP44	4058075000742	1 × 26 W CFLp	1,440	80	120°	50,000 h	30,000 h	15,000 h	350 × 115		01
Surface-C LED 350 18W/4000K IP44	4058075000766	1 × 26 W CFLp	1,440	80	120°	50,000 h	30,000 h	15,000 h	350 × 115		01
Surface-C LED 400 24W/3000K IP44	4058075000780	1 × 32 W CFLp	1,920	80	120°	50,000 h	30,000 h	15,000 h	400 × 120		01
Surface-C LED 400 24W/4000K IP44	4058075000803	1 × 32 W CFLp	1,920	80	120°	50,000 h	30,000 h	15,000 h	400 × 120		01
Surface Circular Sensor											
Surface-C LED 400 24W/3000K S IP44	4058075000827	1 × 32 W CFLp	1,920	80	120°	50,000 h	30,000 h	15,000 h	400 × 120	✓	01
Surface-C LED 400 24W/4000K S IP44	4058075000841	1 × 32 W CFLp	1,920	80	120°	50,000 h	30,000 h	15,000 h	400 × 120	✓	01
Surface Compact IK10											
NEW SF Compact 300 24W/3000K IK10 IP65	4058075062207	1 × 32 W CFLp	1,800	75	120°	50,000 h	30,000 h	15,000 h	300 × 61		02
NEW SF Compact 300 24W/4000K IK10 IP65	4058075062221	1 × 32 W CFLp	1,920	80	120°	50,000 h	30,000 h	15,000 h	300 × 61		02



¹ Energy savings up to 55 %. Compared to luminaire with traditional technologies. The possible power loss of traditional control gear solutions is part of the calculation of the anticipated energy savings
² Refer to [www.ledvance.com/guarantee](#) for precise conditions | ³ Replacement for usually used traditional equivalent | ⁴t[h]: L70 @ 25 °C (T_a) | ⁵t[h]: L80 @ 25 °C (T_a) | ⁶t[h]: L90 @ 25 °C (T_a) | ⁷ Daylight and motion sensor



- Direct replacement for traditional louvre luminaires 600, 625 or 1,200
- Very homogenous light, UGR<19 versions available in accordance with the Norm UNI-EN 12464-1
- Easy and quick installation, advanced flexibility due to including non-flickering (≤5%) external driver
- DALI versions available
- Very slim housing (10.5 mm) and matt white frame
- Different mounting accessories available
- Suitable e.g. for offices, conference rooms, foyers, corridors



SAVE UP TO **50%¹** ENERGY

Product name	GTIN (EAN)	Replace-ment for ³	Im	lm/W		L70 ⁴	L80 ⁵	L90 ⁶	Dimensions L x W x H [mm]	Cut out [mm]	 No. Graphic
Panel 600 × 600											
Panel LED 600 30W/3000K 230V	4058075000483	3 × 18 W/3 × 14 W FL	3,000	100	120°	50,000 h	40,000 h	20,000 h	595 × 595 × 10.5	575 × 575	01
Panel LED 600 30W/4000K 230V	4058075000506	3 × 18 W/3 × 14 W FL	3,000	100	120°	50,000 h	40,000 h	20,000 h	595 × 595 × 10.5	575 × 575	01
Panel LED 600 30W/6500K 230V	4058075000520	3 × 18 W/3 × 14 W FL	3,000	100	120°	50,000 h	40,000 h	20,000 h	595 × 595 × 10.5	575 × 575	01
Panel LED 600 40W/3000K 230V	4058075000544	4 × 18 W/4 × 14 W FL	4,000	100	120°	50,000 h	40,000 h	20,000 h	595 × 595 × 10.5	575 × 575	01
Panel LED 600 40W/4000K 230V	4058075000568	4 × 18 W/4 × 14 W FL	4,000	100	120°	50,000 h	40,000 h	20,000 h	595 × 595 × 10.5	575 × 575	01
Panel LED 600 40W/6500K 230V	4058075000582	4 × 18 W/4 × 14 W FL	4,000	100	120°	50,000 h	40,000 h	20,000 h	595 × 595 × 10.5	575 × 575	01
Panel LED 600 33W/3000K 230V UGR<19	4058075000605	4 × 18 W/4 × 14 W FL	3,100	95	90°	50,000 h	40,000 h	20,000 h	595 × 595 × 10.5	575 × 575	01
Panel LED 600 33W/4000K 230V UGR<19	4058075000629	4 × 18 W/4 × 14 W FL	3,600	110	90°	50,000 h	40,000 h	20,000 h	595 × 595 × 10.5	575 × 575	01
Panel DALI 600 × 600											
Panel DALI 600 40W/3000K 230V	4058075041776	4 × 18 W/4 × 14 W FL	4,000	100	120°	50,000 h	40,000 h	20,000 h	595 × 595 × 10.5	575 × 575	✓ 01
Panel DALI 600 40W/4000K 230V	4058075041790	4 × 18 W/4 × 14 W FL	4,000	100	120°	50,000 h	40,000 h	20,000 h	595 × 595 × 10.5	575 × 575	✓ 01
Panel DALI 600 40W/6500K 230V	4058075041813	4 × 18 W/4 × 14 W FL	4,000	100	120°	50,000 h	40,000 h	20,000 h	595 × 595 × 10.5	575 × 575	✓ 01
Panel DALI 600 33W/3000K 230V UGR<19	4058075041837	4 × 18 W/4 × 14 W FL	3,100	95	90°	50,000 h	40,000 h	20,000 h	595 × 595 × 10.5	575 × 575	✓ 01
Panel DALI 600 33W/4000K 230V UGR<19	4058075041851	4 × 18 W/4 × 14 W FL	3,600	110	90°	50,000 h	40,000 h	20,000 h	595 × 595 × 10.5	575 × 575	✓ 01
Panel 625 × 625											
Panel LED 625 30W/3000K 230V	4058075000643	3 × 18 W/3 × 14 W FL	3,000	100	120°	50,000 h	40,000 h	20,000 h	620 × 620 × 10.5	600 × 600	01
Panel LED 625 30W/4000K 230V	4058075000667	3 × 18 W/3 × 14 W FL	3,000	100	120°	50,000 h	40,000 h	20,000 h	620 × 620 × 10.5	600 × 600	01
Panel LED 625 40W/3000K 230V	4058075000681	4 × 18 W/4 × 14 W FL	4,000	100	120°	50,000 h	40,000 h	20,000 h	620 × 620 × 10.5	600 × 600	01
Panel LED 625 40W/4000K 230V	4058075000704	4 × 18 W/4 × 14 W FL	4,000	100	120°	50,000 h	40,000 h	20,000 h	620 × 620 × 10.5	600 × 600	01
Panel LED 625 33W/3000K 230V UGR<19	4058075811065	4 × 18 W/4 × 14 W FL	3,100	95	90°	50,000 h	40,000 h	20,000 h	620 × 620 × 10.5	600 × 600	01
Panel LED 625 33W/4000K 230V UGR<19	4058075000728	4 × 18 W/4 × 14 W FL	3,600	110	90°	50,000 h	40,000 h	20,000 h	620 × 620 × 10.5	600 × 600	01
Panel DALI 625 × 625											
Panel DALI 625 40W/3000K 230V	4058075041875	4 × 18 W/4 × 14 W FL	4,000	100	120°	50,000 h	40,000 h	20,000 h	620 × 620 × 10.5	600 × 600	✓ 01
Panel DALI 625 40W/4000K 230V	4058075041899	4 × 18 W/4 × 14 W FL	4,000	100	120°	50,000 h	40,000 h	20,000 h	620 × 620 × 10.5	600 × 600	✓ 01
Panel DALI 625 33W/3000K 230V UGR<19	4058075041912	4 × 18 W/4 × 14 W FL	3,100	95	90°	50,000 h	40,000 h	20,000 h	620 × 620 × 10.5	600 × 600	✓ 01
Panel DALI 625 33W/4000K 230V UGR<19	4058075041936	4 × 18 W/4 × 14 W FL	3,600	110	90°	50,000 h	40,000 h	20,000 h	620 × 620 × 10.5	600 × 600	✓ 01
Panel 1200 × 300											
Panel LED 1200 40W/3000K 230V	4058075807327	2 × 36 W/2 × 28 W FL	4,000	100	120°	50,000 h	40,000 h	20,000 h	1,195 × 295 × 10.5	1,175 × 275	02
Panel LED 1200 40W/4000K 230V	4058075807303	2 × 36 W/2 × 28 W FL	4,000	100	120°	50,000 h	40,000 h	20,000 h	1,195 × 295 × 10.5	1,175 × 275	02
Panel LED 1200 33W/3000K 230V UGR<19	4058075807266	2 × 36 W/2 × 28 W FL	3,100	95	90°	50,000 h	40,000 h	20,000 h	1,195 × 295 × 10.5	1,175 × 275	02
Panel LED 1200 33W/4000K 230V UGR<19	4058075807280	2 × 36 W/2 × 28 W FL	3,300	100	90°	50,000 h	40,000 h	20,000 h	1,195 × 295 × 10.5	1,175 × 275	02
Panel DALI 1200 × 300											
Panel DALI 1200 40W/3000K 230V	4058075042018	2 × 36 W/2 × 28 W FL	4,000	100	120°	50,000 h	40,000 h	20,000 h	1,195 × 295 × 10.5	1,175 × 275	✓ 02
Panel DALI 1200 40W/4000K 230V	4058075041998	2 × 36 W/2 × 28 W FL	4,000	100	120°	50,000 h	40,000 h	20,000 h	1,195 × 295 × 10.5	1,175 × 275	✓ 02
Panel DALI 1200 33W/3000K 230V UGR<19	4058075041950	2 × 36 W/2 × 28 W FL	3,100	95	90°	50,000 h	40,000 h	20,000 h	1,195 × 295 × 10.5	1,175 × 275	✓ 02
Panel DALI 1200 33W/4000K 230V UGR<19	4058075041974	2 × 36 W/2 × 28 W FL	3,300	100	90°	50,000 h	40,000 h	20,000 h	1,195 × 295 × 10.5	1,175 × 275	✓ 02
Panel Value 600 × 600 (available by end-January 2018)											
NEW Panel LED Value 600 40W/3000K	4058075066588	4 × 18 W/4 × 14 W FL	3,300	85	120°	30,000 h	—	—	595 × 595 × 10.5	575 × 575	01
NEW Panel LED Value 600 40W/4000K	4058075066601	4 × 18 W/4 × 14 W FL	3,600	90	120°	30,000 h	—	—	595 × 595 × 10.5	575 × 575	01
NEW Panel LED Value 600 40W/6500K	4058075066625	4 × 18 W/4 × 14 W FL	3,600	90	120°	30,000 h	—	—	595 × 595 × 10.5	575 × 575	01
NEW Panel LED Value 600 40W/3000K UGR<19	4058075066649	4 × 18 W/4 × 14 W FL	3,300	90	90°	30,000 h	—	—	595 × 595 × 10.5	575 × 575	01
NEW Panel LED Value 600 40W/4000K UGR<19	4058075066663	4 × 18 W/4 × 14 W FL	3,600	90	90°	30,000 h	—	—	595 × 595 × 10.5	575 × 575	01
Panel accessories (suitable for Panel and Panel Value products in the respective size new products available by mid-February 2018)											
Panel 600 Surface Mount Kit	4058075813816	—	—	—	—	—	—	—	600.5 × 600.5 × 56	—	03
Panel 625 Surface Mount Kit	4058075813830	—	—	—	—	—	—	—	625.5 × 625.5 × 56	—	03
Panel 1200 Surface Mount Kit	4058075813854	—	—	—	—	—	—	—	1,200.5 × 300.5 × 56	—	04
NEW Panel 600 Surface Mount Kit Value	4058075075795	—	—	—	—	—	—	—	600.5 × 600.5 × 45	—	—
NEW Panel 625 Surface Mount Kit Value	4058075091412	—	—	—	—	—	—	—	625.5 × 625.5 × 45	—	—
NEW Panel 1200 Surface Mount Kit Value	4058075091429	—	—	—	—	—	—	—	1,200.5 × 300.5 × 45	—	—
Panel Mounting Clips 1x4	4058075044630	—	—	—	—	—	—	—	35 × 30 × 45	—	05
Panel Mounting Clips 2x4	4058075811089	—	—	—	—	—	—	—	35 × 30 × 45	—	05
Panel 600/625 Suspension Kit	4058075800106	—	—	—	—	—	—	—	3,000	—	06
Panel 1200 Suspension Kit	4058075027817	—	—	—	—	—	—	—	3,000	—	06
Panel 1200 Security Bracket	4058075043916	—	—	—	—	—	—	—	—	—	07


¹ Energy savings up to 50 %. Compared to luminaire with traditional technologies. The possible power loss of traditional control gear solutions is part of the calculation of the anticipated energy savings
² Refer to www.ledvance.com/guarantee for precise conditions | ³ Replacement for usually used traditional equivalent | ⁴t[h]: L70 @ 25°C (T_a) | ⁵t[h]: L80 @ 25°C (T_a) | ⁶t[h]: L90 @ 25°C (T_a) | ⁷ Dimmable with DALI Interface, for lighting controls see page 21

OUTDOOR

- Attractive design, enhanced by high quality materials and finish
 - Energy savings up to 81 %¹
 - Robust and weather-proof
- Simple installation, all necessary accessories included
 - Suitable e.g. for yards, entrances, driveways, facades



SAVE UP TO 81%¹ ENERGY

Product name	GTIN (EAN)	Replace-ment for ³	lm	lm/W	L70 ⁴	Dimensions L × W × H [mm] Ø × H [mm]	 ⁵	No. Graphic
Outdoor Spot								
NEW Outdoor Facade Spot 8W/3000K Dark Grey IP54	4058075074712	40 W GLS	440	55	30,000 h	135 × 90 × 140		01
NEW Outdoor Facade Spot 8W/3000K White IP54	4058075074736	40 W GLS	460	58	30,000 h	135 × 90 × 140		02
Outdoor Edge								
NEW Outdoor Facade Edge 12W/3000K Dark Grey IP54	4058075074750	60 W GLS	740	64	30,000 h	168 × 100 × 273		03
NEW Outdoor Facade Edge 12W/3000K White IP54	4058075074774	60 W GLS	770	67	30,000 h	168 × 100 × 273		04
NEW Outdoor Facade Edge 12W/3000K Dark Grey Sensor IP54	4058075074798	60 W GLS	740	61	30,000 h	168 × 100 × 273	✓	05
NEW Outdoor Facade Edge 12W/3000K White Sensor IP54	4058075074811	60 W GLS	770	63	30,000 h	168 × 100 × 273	✓	06
Outdoor Lantern								
NEW Outdoor Facade Lantern 12W/3000K Dark Grey IP54	4058075074835	40 W GLS	610	53	30,000 h	176 × 110 × 240		07
NEW Outdoor Bollard 500 Lantern 12W/3000K Dark Grey IP54	4058075074859	40 W GLS	610	53	30,000 h	110 × 500		08
NEW Outdoor Bollard 900 Lantern 12W/3000K Dark Grey IP54	4058075074873	40 W GLS	610	53	30,000 h	110 × 900		09
Outdoor Surface								
NEW Outdoor Surface Round 13W/3000K Dark Grey IP54	4058075074897	40 W GLS	480	37	30,000 h	202 × 45		10
NEW Outdoor Surface Round 13W/3000K White IP54	4058075074910	40 W GLS	600	46	30,000 h	202 × 45		11
NEW Outdoor Surface Square 13W/3000K Dark Grey IP54	4058075074934	40 W GLS	480	37	30,000 h	202 × 202 × 45		12
NEW Outdoor Surface Square 13W/3000K White IP54	4058075074958	40 W GLS	600	46	30,000 h	202 × 202 × 45		13
Outdoor Belt								
NEW Outdoor Facade Belt Round 11W/3000K Dark Grey IP54	4058075074972	40 W GLS	400	38	30,000 h	60 × 240 × 142		14
NEW Outdoor Facade Belt Square 11W/3000K Dark Grey IP54	4058075074996	40 W GLS	410	39	30,000 h	60 × 240 × 142		15
Outdoor Indirect								
NEW Outdoor Facade Indirect Round 13W/3000K Dark Grey IP54	4058075075016	40 W GLS	480	37	30,000 h	150 × 118		16
NEW Outdoor Facade Indirect Round 13W/3000K White IP54	4058075075030	40 W GLS	640	49	30,000 h	150 × 118		17
Outdoor UpDown								
NEW Outdoor Facade UpDown 12W/3000K Dark Grey IP54	4058075075054	60 W GLS	700	61	30,000 h	55 × 90 × 160		18
NEW Outdoor Facade UpDown 12W/3000K White IP54	4058075075078	60 W GLS	710	62	30,000 h	55 × 90 × 160		19
Outdoor Pole								
NEW Outdoor Facade Pole 6W/3000K Steel IP44	4058075075092	40 W GLS	360	60	30,000 h	138 × 102 × 135		20
NEW Outdoor Facade Pole 6W/3000K Steel Sensor IP44	4058075075115	40 W GLS	360	60	30,000 h	150 × 102 × 135	✓	21
NEW Outdoor Bollard 500 Pole 6W/3000K Steel IP44	4058075075139	40 W GLS	360	60	30,000 h	102 × 500		22
NEW Outdoor Bollard 800 Pole 6W/3000K Steel IP44	4058075075153	40 W GLS	360	60	30,000 h	102 × 800		23
NEW Outdoor Surface Pole 6W/3000K Steel IP44	4058075075177	40 W GLS	360	60	30,000 h	102 × 87		24

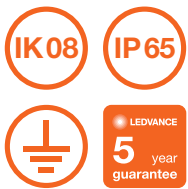
All products will be available from February 2018

¹ Energy savings up to 81 %. Compared to luminaire with traditional technologies. The possible power loss of traditional control gear solutions is part of the calculation of the anticipated energy savings
² Refer to www.ledvance.com/guarantee for precise conditions | ³ Replacement for usually used traditional equivalent | ⁴ t[h]: L70 @ 25 °C (T_a) | ⁵ Daylight and motion sensor

DAMP PROOF



- IP65 damp proof luminaires with attractive classic and modern designs
- Efficacy of up to 120 lm/W with up to 6,700 lumen output
- Easy installation and tool-free electrical connection
- Empty body versions for LED tubes available
- Suitable e.g. for garages, underpasses, workshops, industrial and storage facilities



RECOMMENDED T8 LED LAMPS FOR 1,500 HOUSING:

OSRAM SubstiTUBE® T8 Advanced UO EM
ST8AU-1.5m-22.5W-830-EM | GTIN (EAN): 4058075818330
ST8AU-1.5m-22.5W-840-EM | GTIN (EAN): 4058075818354
ST8AU-1.5m-22.5W-865-EM | GTIN (EAN): 4058075818378

OSRAM SubstiTUBE® T8 Advanced EM
ST8A-1.5m-20.6W-840-EM | GTIN (EAN): 4058075818170
ST8A-1.5m-20.6W-865-EM | GTIN (EAN): 4058075818194

More information:
ledvance.com/substitube

OSRAM

SAVE UP TO 60%¹ ENERGY

Product name	GTIN (EAN)	Replace-ment for ³	lm	lm/W		L70 ⁴	L80 ⁵	L90 ⁶	Dimensions L x W x H [mm]	No. Graphic
Damp Proof										
Damp Proof LED 1200 21W/4000K IP65	4058075000902	1 x 36 W FL	2,400	115	105°	50,000 h	35,000 h	20,000 h	1,200 x 95 x 78	01
Damp Proof LED 1200 39W/4000K IP65	4058075000926	2 x 36 W FL	4,400	115	105°	50,000 h	35,000 h	20,000 h	1,200 x 95 x 78	01
Damp Proof LED 1200 39W/6500K IP65	4058075000865	2 x 36 W FL	4,400	115	105°	50,000 h	35,000 h	20,000 h	1,200 x 95 x 78	01
Damp Proof LED 1500 30W/4000K IP65	4058075000940	1 x 58 W FL	3,500	115	105°	50,000 h	35,000 h	20,000 h	1,500 x 95 x 78	01
Damp Proof LED 1500 55W/4000K IP65	4058075000964	2 x 58 W FL	6,400	115	105°	50,000 h	35,000 h	20,000 h	1,500 x 95 x 78	01
Damp Proof LED 1500 55W/6500K IP65	4058075000889	2 x 58 W FL	6,400	115	105°	50,000 h	35,000 h	20,000 h	1,500 x 95 x 78	01
Damp Proof Compact										
DP Compact 1200 23W/4000K GR IP65	4058075062085	1 x 36 W FL	2,800	120	120°	50,000 h	35,000 h	20,000 h	1,290 x 86 x 68	02
DP Compact 1200 44W/4000K GR IP65	4058075062108	2 x 36 W FL	5,400	120	120°	50,000 h	35,000 h	20,000 h	1,290 x 86 x 68	02
DP Compact 1200 44W/6500K GR IP65	4058075062122	2 x 36 W FL	5,400	120	120°	50,000 h	35,000 h	20,000 h	1,290 x 86 x 68	02
DP Compact 1500 31W/4000K GR IP65	4058075062146	1 x 58 W FL	3,800	120	120°	50,000 h	35,000 h	20,000 h	1,590 x 86 x 68	02
DP Compact 1500 55W/4000K GR IP65	4058075062160	2 x 58 W FL	6,700	120	120°	50,000 h	35,000 h	20,000 h	1,590 x 86 x 68	02
DP Compact 1500 55W/6500K GR IP65	4058075062184	2 x 58 W FL	6,700	120	120°	50,000 h	35,000 h	20,000 h	1,590 x 86 x 68	02
Damp Proof Slim Value										
DP SLIM VALUE 1200 36W/4000K IP65	4058075066458	2 x 36 W FL	4,000	110	120°	30,000 h	—	—	1,200 x 35 x 48	03
DP SLIM VALUE 1200 36W/6500K IP65	4058075066472	2 x 36 W FL	4,000	110	120°	30,000 h	—	—	1,200 x 35 x 48	03
DP SLIM VALUE 1500 50W/4000K IP65	4058075066496	2 x 58 W FL	5,500	110	120°	30,000 h	—	—	1,500 x 35 x 48	03
DP SLIM VALUE 1500 50W/6500K IP65	4058075066519	2 x 58 W FL	5,500	110	120°	30,000 h	—	—	1,500 x 35 x 48	03
Damp Proof Housing for T8 LED lamps										
Damp Proof 1500 1xLamp Housing IP65	4058075000988	—	—	—	—	—	—	—	1,565 x 72 x 86	04
Damp Proof 1500 2xLamp Housing IP65	4058075001008	—	—	—	—	—	—	—	1,565 x 115 x 86	05

¹ Energy savings up to 60 %. Compared to luminaire with traditional technologies. The possible power loss of traditional control gear solutions is part of the calculation of the anticipated energy savings
² Refer to www.ledvance.com/guarantee for precise conditions | ³ Replacement for usually used traditional equivalent | ⁴ t[h]: L70 @ 25 °C (T_a) | ⁵ t[h]: L80 @ 25 °C (T_a) | ⁶ t[h]: L90 @ 25 °C (T_a)



HIGH BAY

- Replacement for traditional high-bay luminaires
- Energy savings of up to 60 %¹
- High luminous efficacy with up to 135 lm/W
- Exclusive LEDVANCE design with optimized size and weight
- Different luminous flux and beam angles for different mounting heights available
- Accessories included
- Suitable e.g. for warehouse, industry, logistic centers, general lighting for high ceilings



SAVE UP TO 60%¹ ENERGY

Product name	GTIN (EAN)	Replace-ment for ³	lm	lm/W		L70 ⁴	L80 ⁵	L90 ⁶	Dimensions Ø x H [mm]	No. Graphic
High Bay (cable length: 1.5 m new products available from March 2018)										
High Bay LED 95W/4000K 90 DEG IP65	4058075074330	250 W HID	13,000	135	90°	50,000 h	35,000 h	20,000 h	285 x 129.5	01
High Bay LED 95W/4000K 110 DEG IP65	4058075074354	250 W HID	13,000	135	110°	50,000 h	35,000 h	20,000 h	285 x 129.5	01
High Bay LED 120W/4000K 100-240V IP65	4058075001039	250 W HID	13,000	110	90°	50,000 h	35,000 h	20,000 h	295 x 141	02
High Bay LED 120W/6500K 100-240V IP65	4058075811041	250 W HID	13,500	115	90°	50,000 h	35,000 h	20,000 h	295 x 143	02
High Bay LED 165W/4000K 70 DEG IP65	4058075074361	400 W HID	22,000	135	70°	50,000 h	35,000 h	20,000 h	376 x 139	02
High Bay LED 200W/4000K 100-240V IP65	4058075001053	400 W HID	22,000	110	70°	50,000 h	35,000 h	20,000 h	380 x 159	03
High Bay LED 200W/4000K 110 DEG IP65	4058075074385	400 W HID	27,000	135	110°	50,000 h	35,000 h	20,000 h	376 x 139	04
High Bay LED 200W/6500K 100-240V IP65	4058075811058	400 W HID	23,000	120	70°	50,000 h	35,000 h	20,000 h	380 x 159	03
High Bay LED 250W/4000K 100-240V IP65	4058075814776	400 W HID	30,000	120	70°	50,000 h	35,000 h	20,000 h	452 x 160	03
High Bay LED 250W/6500K 100-240V IP65	4058075814783	400 W HID	30,000	120	70°	50,000 h	35,000 h	20,000 h	452 x 160	03

¹ Energy savings up to 60 %. Compared to luminaire with traditional technologies. The possible power loss of traditional control gear solutions is part of the calculation of the anticipated energy savings
² Refer to www.ledvance.com/guarantee for precise conditions | ³ Replacement for usually used traditional equivalent | ⁴ t[h]: L70 @ 25 °C (T_a) | ⁵ t[h]: L80 @ 25 °C (T_a) | ⁶ t[h]: L90 @ 25 °C (T_a)

FLOODLIGHT

- Replacement for floodlights with halogen lamps (up to 1,500 W)
- Energy savings of up to 90 %¹
- Optimized weight and size due to compact design
- Very homogenous light
- Tempered glass cover to reduce glare
- Versions with sensor or asymmetrical beam angle available
- Suitable e.g. for residential areas and courtyards, building facades and security, parking lots



SAVE UP TO 90%¹ ENERGY

Product name	GTIN (EAN)	Replacement for ³	lm	lm/W	°	L70 ⁴	L80 ⁵	L90 ⁶	Dimensions L x W x H [mm]	No. Graphic ⁷
Floodlight (cable length: 1 m)										
Floodlight LED 10W/3000K White IP65	4058075810938	80 W HAL	800	80	100°	50,000 h	30,000 h	15,000 h	117 x 127 x 39	01
Floodlight LED 10W/4000K White IP65	4058075810952	80 W HAL	800	80	100°	50,000 h	30,000 h	15,000 h	117 x 127 x 39	01
Floodlight LED 20W/3000K White IP65	4058075001084	120 W HAL	2,000	100	100°	50,000 h	30,000 h	15,000 h	155 x 167 x 44	—
Floodlight LED 20W/3000K Black IP65	4058075001060	120 W HAL	2,000	100	100°	50,000 h	30,000 h	15,000 h	155 x 167 x 44	02
Floodlight LED 20W/4000K Black IP65	4058075810976	120 W HAL	2,000	100	100°	50,000 h	30,000 h	15,000 h	155 x 167 x 44	02
Floodlight LED 50W/3000K White IP65	4058075001145	400 W HAL	5,000	100	100°	50,000 h	30,000 h	15,000 h	187 x 216 x 62	03
Floodlight LED 50W/3000K Black IP65	4058075001107	400 W HAL	5,000	100	100°	50,000 h	30,000 h	15,000 h	187 x 216 x 62	—
Floodlight LED 50W/4000K Black IP65	4058075810990	400 W HAL	5,000	100	100°	50,000 h	30,000 h	15,000 h	187 x 216 x 62	—
Floodlight LED 100W/4000K Black IP65	4058075001138	750 W HAL	10,000	100	100°	50,000 h	40,000 h	20,000 h	243 x 253 x 93	06
Floodlight LED 100W/6500K Black IP65	4058075811010	750 W HAL	10,000	100	100°	50,000 h	40,000 h	20,000 h	243 x 253 x 93	06
Floodlight LED 150W/4000K Black IP65	4058075001176	1,000 W HAL	15,000	100	100°	50,000 h	40,000 h	20,000 h	269 x 298 x 128	06
Floodlight LED 150W/6500K Black IP65	4058075811027	1,000 W HAL	15,000	100	100°	50,000 h	40,000 h	20,000 h	269 x 298 x 128	06
Floodlight LED 200W/4000K Black IP65	4058075001190	1,500 W HAL	20,000	100	100°	50,000 h	40,000 h	20,000 h	328 x 362 x 125	06
Floodlight LED 200W/6500K Black IP65	4058075811034	1,500 W HAL	20,000	100	100°	50,000 h	40,000 h	20,000 h	328 x 362 x 125	06
Floodlight Sensor (cable length: 1 m)										
Floodlight LED 20W/3000K BK S IP65	4058075814677	120 W HAL	1,900	95	100°	50,000 h	30,000 h	15,000 h	167 x 223.5 x 44	✓ 04
Floodlight LED 20W/4000K BK S IP65	4058075814691	120 W HAL	1,900	95	100°	50,000 h	30,000 h	15,000 h	167 x 223.5 x 44	✓ 04
Floodlight LED 50W/3000K BK S IP65	4058075814714	400 W HAL	4,750	95	100°	50,000 h	30,000 h	15,000 h	216 x 251 x 62	✓ 05
Floodlight LED 50W/4000K BK S IP65	4058075814738	400 W HAL	4,750	95	100°	50,000 h	30,000 h	15,000 h	216 x 251 x 62	✓ 05
Floodlight Asymmetrical (cable length: 1 m)										
Flood LED Asym 150W/4000K BK IP65	4058075814752	1,000 W HAL	15,000	100	38° x 80°	50,000 h	40,000 h	20,000 h	402.4 x 303.4 x 64	07
Flood LED Asym 200W/4000K BK IP65	4058075814769	1,500 W HAL	20,000	100	38° x 80°	50,000 h	40,000 h	20,000 h	402.4 x 303.4 x 64	07

¹ Energy savings up to 90 %. Compared to luminaire with traditional technologies. The possible power loss of traditional control gear solutions is part of the calculation of the anticipated energy savings
² Refer to www.ledvance.com/guarantee for precise conditions | ³ Replacement for usually used traditional equivalent | ⁴ t[h]: L70 @ 25 °C (T_a) | ⁵ t[h]: L80 @ 25 °C (T_a) | ⁶ t[h]: L90 @ 25 °C (T_a) | ⁷ Daylight and motion sensor

LIGHTING CONTROLS FROM OSRAM SAVING EVEN MORE ENERGY

LUXeye – INTELLIGENT LIGHTING CONTROL WITH SMARTPHONE CONNECTION



LUXeye Sense DALI BT | GTIN (EAN): 4052899957411
 LUXeye Sense 10A BT | GTIN (EAN): 4052899957428

The intuitive way to achieve almost perfect light control
 The compact system with integrated sensor technology (daylight and presence) as well as a Bluetooth® interface controls the light automatically and can be overridden conveniently via a smartphone or pushbutton.

Two versions: dimmable and with switch relay
 While the dimmable LUXeye Sense DALI BT can control up to 20 luminaires via a DALI interface, the LUXeye Sense 10A BT features a 10-ampere switch relay.

Easy to use via an app
 With the LUXeye app, the light can be switched on and off and, with the DALI version, also dimmed autonomously – conveniently via a smartphone. Automatic settings can be overridden manually at any time.

Quick installation and convenient adjustment
 According to the complexity of your project, you can choose freely from three different options: Plug & Play, manual adjustment with a screwdriver or convenient adjustment via a smartphone.

MORE CONTROLS AND SENSORS FOR LEDVANCE LUMINAIRES



DALI PCU | GTIN (EAN):
 4052899955622



DALI MCU | GTIN (EAN):
 4008321189721



DUO | GTIN (EAN):
 4008321496355



HIGH BAY | GTIN (EAN):
 4008321410078



VISION | GTIN (EAN):
 4008321957047

CONTROLS: DALI PCU/DALI MCU

- Intuitive manual dimming and switching
- Individual setting of minimal brightness level
- Suitable for up to 25 ECGs
- Flexible expansion via DALI repeaters or further DALI PCU/MCU
- Automatic synchronization between the control points
- Up to four DALI PCU/MCU can be connected in parallel to set up multiple control points
- Length of the DALI control cable: up to 300 m
- **DALI PCU:** DALI edition 2 (IEC 62386 ed. 2) implemented, integrated DALI supply
- Ideal for conference rooms, restaurants, shop lighting

SENSORS: DUO, HIGHBAY, VISION

- Light and presence/motion sensors with switching contacts
- Energy savings up to 45 % (compared to manual switching)
- Suitable for up to 30 ECGs
- **DUO:** Ideal for individual and open-plan offices, waiting rooms – daylight, presence or combined detection
- **HIGH BAY:** Ideal for high ceiling heights, factories, production halls
- **VISION:** Ideal for large areas, open-plan offices, corridors, storage rooms

OSRAM

FIND THE RIGHT SOLUTION FOR YOUR APPLICATION DEMANDS

LEDVANCE IS YOUR PARTNER FOR LIGHTING

As your lighting partner, we want to help you drive down the costs of your lighting systems and improve light quality. With comprehensive know-how and experience in all common areas of application, LEDVANCE supports you in the planning and implementation of your lighting projects. And thanks to an extensive network as well as in-depth discussions with our customers, we can identify trends and developments early on.

We can therefore help shape your requirements from the outset and fulfill them in line with your objectives. Our LEDVANCE Vertical Application Management team will assist you with individual and targeted advice and action. We have experts for many applications and especially for the four main areas below. Get in touch with us! ledvance.com/vam



FACILITY MANAGEMENT

- Office
- Parking garage
- Transportation



INDUSTRY

- Production facility
- Distribution center
- Administration



HOSPITALITY

- Hotels
- Restaurants
- Spa



SHOPS

- Grocery
- Fashion
- Non-food (e.g. DIY)

FITS YOUR APPLICATION: LEDVANCE LUMINAIRES

LEDVANCE LED luminaires are the suitable choice for when you simply need the right light for common applications. Discover here some examples for matching couples:

OFFICE LIGHTING



Your match: LEDVANCE Panel

PARKING GARAGES



Your match: LEDVANCE Damp Proof

CIRCULATION ROUTES



Your match: LEDVANCE Surface IK10

LOGISTICS HALL



Your match: LEDVANCE High Bay

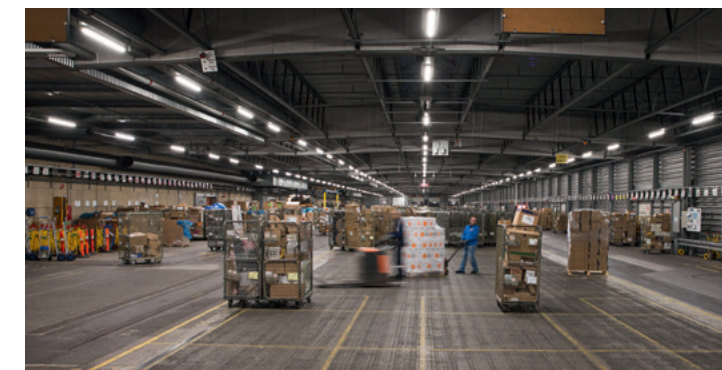
BOOST YOUR BUSINESS WITH LED LIGHTING

SWITCH TO EFFICIENT LED LIGHT, CUT COSTS AND INCREASE PROFITABILITY

Thanks to energy savings of up to 90 %, long product lifetimes and rapid amortization, LED lamps and luminaires from LEDVANCE make a positive contribution to a building's balance sheet. Savings achieved by reducing costs for energy and maintenance in lighting help to improve profitability and free up money for additional investments. Incidentally, by saving energy you can also make a contribution to sustainability. These facts are not just a fundamental component of economic success but also one of the reasons why companies and institutions throughout the world rely on products and services from LEDVANCE.



BEST EXAMPLES OF SUCCESS WITH LEDVANCE PRODUCTS:



POST NORD PACKING CENTER

Broendby, Denmark

- 🕒 **3.5 years** amortization (ROI)
- 🌍 **40 %** CO₂ emission reduction p.a.
- ⚡ **50 %** energy savings p.a.

94,000 EUR savings p.a.

RADISSON BLU HOTEL

Cologne, Germany

- 🕒 **1.25 years** amortization (ROI)
- 🌍 **57 %** CO₂ emission reduction p.a.
- ⚡ **57 %** energy savings p.a.

136,000 EUR savings p.a.



For more brilliant LEDVANCE projects visit: ledvance.com/projects

With almost 9,000 employees and active in more than 120 countries, LEDVANCE is one of the world's leading general lighting providers for professional users and retail customers. Emerged from the general lighting business of OSRAM, the company offers advanced LED lamps, standardized LED luminaires, intelligent, networked Smart Home and Building solutions, and traditional light sources.

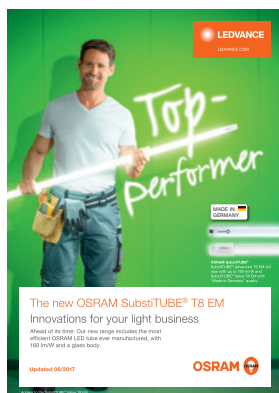


LEDVANCE GmbH
Parkring 29–33
85748 Garching
Germany

LEDVANCE EOOD
9, Shipchenski prohod Blvd.
1111 Sofia
Bulgaria

LEDVANCE SRL
Str. Nicolae G. Caramfil, Nr. 69
014146 Bucuresti
Romania

You will find lots of additional brochures and product information on our lamps and luminaires at:
ledvance.com/download



LEDVANCE is the licensee of product trademark OSRAM in general lighting



LEDVANCE.COM

